



LITTLE EXPLORERS **LET'S GO** →

FIRE STATION

HELICOPTER



**MORE THAN
30 FLAPS!**

TRAINING
TOWER



FIRE CHIEF



**LIFT THE FLAPS
TO EXPLORE
A FIRE STATION
INSIDE AND OUT!**

FIRE ENGINE



FIREFIGHTER



WELCOME TO THE FIRE STATION

This building is a fire station. It's a very important place where firefighters keep their equipment and fire engines, and it's also where they eat and sleep! Let's take a closer look.

Training tower

This tall tower is where firefighters learn how to tackle emergencies. They test their equipment on a mix of doors and windows and practise putting out fires on the different levels.



Where is it?

Most towns have a fire station. They are usually in a spot where the engines can reach the road quickly and get to a lot of places. Do you know where your nearest fire station is?

Good morning!



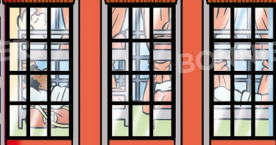
Helipad

This giant 'H' on top of the fire station roof is a helipad. It's a big, flat space where helicopters land.



Shhh!

What is going on behind these windows? Lift the flap as quietly as you can.



Bell



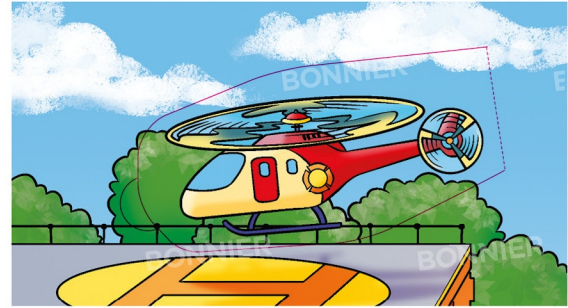
Ring the bell

This bell sounds whenever there is an emergency. It is very loud so that everyone in the building hears it and knows it is time to get ready.

Open up!

The big doors at the front of the building lead straight to where the fire engines are parked.





This helicopter is coming in to land!
Sometimes it's faster to fly to
an emergency, so the helicopter
whizzes off to help while people
wait for the engines to arrive.

These firefighters are fast
asleep during the day, but when
nighttime comes, they'll be wide
awake and ready to respond
to any emergency. This is called
being on the night shift.

The doors open up to
let the engines in and
out of the station. In an
emergency, they slide open
very quickly so the engine
can speed away and start
helping people in trouble.

THE ENGINE ROOM

The biggest thing at the fire station is the fire engine. It lives in the engine room at the front of the building, ready for a quick getaway. The fire engine holds lots of important equipment to help in an emergency.

Sirens and lights

When a fire engine sounds its siren and flashes its lights, it needs to get somewhere fast! Cars, lorries and bikes on the road will move out of the way to let the engine pass.

Boiling hot!

Emergencies can take a long time to sort out and people can get upset or frightened. The water boiler is on hand to make hot drinks to comfort people and warm them up, too.

Ladders

Ladders help firefighters reach high-up blazes and rescue people and animals who are stuck in spots that are hard to reach. There's a big ladder on top of the engine and a smaller removable ladder tucked inside the storage area.



The cab

When they're on the move, firefighters sit in the engine's cab. The driver can control the sirens and lights with the push of a button.

Engine storage

The sides of the engine are packed with special equipment. When firefighters reach an emergency, they lift the shutters quickly to get what they need.

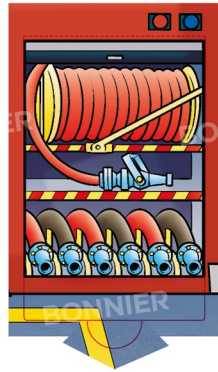
Let's check under here!

Safety checks

Firefighters must check the engine and all the equipment at the start and end of each day to make sure they aren't damaged.

Look out!

Fire engines are painted in bright colours to make them visible on the road. Their yellow and red stripes are hard for other vehicles to miss.



Hoses connect to the back of the engine to get the water stored inside the truck. But don't worry if the water runs out – engines have a special machine that pumps water from lakes, rivers and even swimming pools!

Long hoses are stored on the side of the engine so that firefighters can reach them easily. It takes many firefighters to use a single hose because they're very heavy. Sometimes, firefighters have hoses attached to their backpacks to tackle fires in small places!

Firefighters don't only put out fires. They use bolt cutters and ladders to rescue people who are trapped, and a megaphone to warn people when there has been an accident nearby.

Firefighters use walkie-talkies and a special tablet to keep in contact with the fire station at all times. They tell them where to go and what to expect when they reach the emergency.

LIVING QUARTERS

Firefighters work in shifts to make sure someone is always on duty. Some people work during the daytime while others take the night shift, but there's always a crew ready to respond. Firefighters spend lots of time at the station, so it needs to feel just like home!

What's cooking?

Eating healthy meals helps firefighters keep their energy up. The kitchen has an oven and stove for cooking, and a fridge stocked with snacks and drinks.



Common room

Firefighters work very hard, so it's important that they have a place to relax. It might be a while before the next call, so the common room is filled with things to do while they wait.



Get some rest

Rest is important for firefighters as it keeps their bodies and minds fresh and ready for anything! Special beds called bunk beds are stacked on top of each other so lots of people can sleep at once.



What's in here?



Chief's office

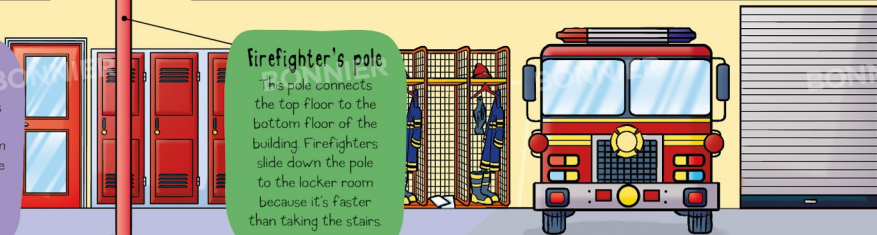
It's not just about putting out fires! A big part of a firefighter's job is to teach people about fire safety and how to stop fires from starting in the first place. The fire chief meets with headteachers to plan school trips and give important safety advice.



Fire Chief

firefighter's pole

This pole connects the top floor to the bottom floor of the building. Firefighters slide down the pole to the locker room because it's faster than taking the stairs.





It is a gym! Here,
firefighters train to
keep strong and healthy.
They use the treadmill
to stay fast and the
weights and punching
bag to build muscle.

In their free time,
firefighters watch the
news, read books and
play team-building
games. Winner!

Firefighters must spring into
action at a moment's notice
- even at dinner time! These
firefighters will have to wait
to finish their food.

Sometimes, firefighters
will receive a thank
you card from people
they have helped.

LOCKER ROOM

When the bell sounds, it's time to get ready and gear up! Firefighters head straight to the locker room where their safety equipment is stored. Let's see what they wear.



Safety first!

Firefighters need to stay safe when doing dangerous jobs. That's why they wear lots of protective clothing. Let's see what each piece does.

Breathing apparatus

Fire creates smoke that is harmful to breathe in. Firefighters wear face shields and oxygen tanks so they can breathe clean air in smoky places.

What do I need?

What's behind this door?

face shield

Oxygen tank

Lockers

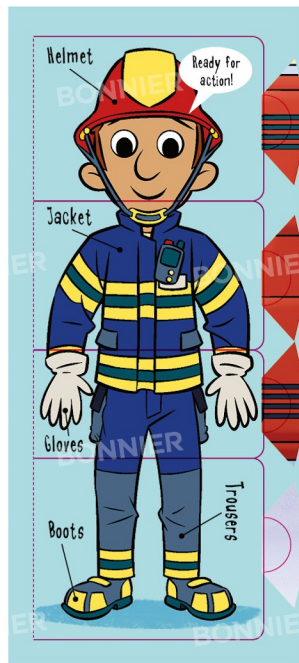
Each firefighter has a locker to store their belongings. They spend lots of time at the fire station, so it's important to have things they might need from home.

Looking sharp

When they're not helping at emergencies, firefighters dress in their smart uniforms. You can tell a firefighter's rank by the marks on their shirt collar or helmet.

Time is ticking

Firefighters train to get dressed in two minutes or less so they can reach emergencies as fast as possible! Why don't you try it?



Helmet

Firefighters wear hard helmets to protect their head from heat, falling objects and injury.

Jacket and trousers

These clothes are made from a special material that protects people from heat and flames. They also have strips that reflect light so firefighters can be seen at night and through smoke.

Gloves

Firefighters handle hot and sharp objects that can hurt their hands, so they wear extra thick, strong gloves.

Boots

These boots have steel around the toes to protect the firefighter's feet. They also have plenty of grip on the soles to stop firefighters from slipping!

It's the laundry room! To make sure firefighters have a fresh supply of uniforms, these big washing machines are always rumbling!

This firefighter's locker has some soap to wash with, an extra set of clothes, some food, a family picture and a book to read! What would you keep inside your locker?

ON THE ROOF

Sometimes an emergency happens far away from the station, or in a place that is difficult to reach. This is where the fire station's helicopter comes in. Let's go to the roof!

H is for Helipad!

The circle around the big 'H' reminds people to stay clear while the helicopter is taking off and landing. The rooftop must be clear at all times so the helicopter can touch down safely.

The Crew

This crew is about to board. They're in a rush, but they know what they're doing. There's a pilot, a navigator and four firefighters ready to go.



Where's this one heading?



Stretcher to safety

A stretcher is loaded onto the helicopter. Firefighters use it to carry people who are too injured to move.

Stretcher

Navigator

Firefighter

Pilot

Medical kit

Helping hands

Helpers guide the helicopter in to land. As helicopters are very loud, the pilot and helicopter marshaller use flag signals. This is called semaphore.





It's going to a fire at sea
The helicopter can help put
out the fire and lift people
off the boat to safety.

The helicopter carries all the tools
firefighters might need, such as
ropes, winches, hoses, stretchers
and a big tank of water for
putting out fires from the air.

In places that are tricky to reach,
the helicopter hovers above the
emergency site while the injured
person is strapped to the stretcher
and lifted to safety.

EMERGENCY!

Let's take a closer look at what happens at a fire station when there is an emergency. Follow the arrows around the station to see what people do at every step of the way.



2. Springing into action!

Next, a firefighter will ring the bell and sound the alarm. Wherever they are, the firefighters run to the pole and slide to the bottom floor.



1. Emergency call

A call comes in to the fire station and gets picked up on the turn out computer. The computer tells the firefighters what the emergency is and where they need to go.



Turn out computer

3. Uniform ready

So that they can change in a flash, each firefighter's uniform is labelled and ready for them when they reach the locker room.

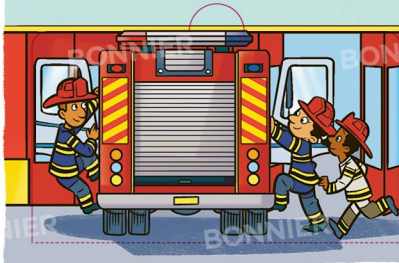


4. Briefing

Before the crew head off, they are told what to expect at the emergency. Firefighters need to know the type of problem so that they carry the proper equipment to the scene.

5. Pile in!

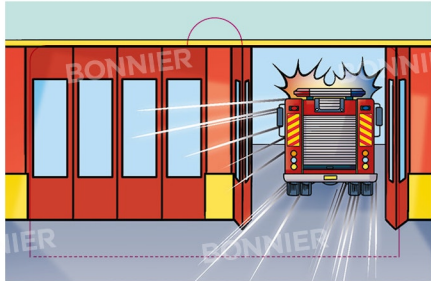
The firefighters are now ready to go. While they pile into the engine and take their seats, the fire station doors begin to open. It's time to zoom off!



6. Back at base

The firefighters back at the station will keep in touch with the crew on the road and help them out with anything else they might need.





Before they can leave, the driver switches on the engine's siren and flashing lights. They need to go as fast as they can and warn other drivers that they're coming.

Once they are ready, firefighters will check each others gear and help out if they need to. Teamwork is a very important skill for firefighters to have!

In an emergency, every second counts. The pole saves firefighters valuable time, dropping them straight into the locker room to get changed.

The call has come from the bakery! The map shows where the firefighters need to go and the fastest route to get there.

FIRE! FIRE!

Oh no! A fire has broken out at the bakery. The baker has called the emergency services and the fire engine has just arrived with its brave crew of firefighters!

Searching the building

Some firefighters enter the bakery to search for anyone trapped or injured. They are wearing their breathing apparatus and face shields to protect themselves from the harmful smoke.

Is anyone there?

Solving the case

Firefighters need to know how the fire started so they can help to stop it from happening again. This broken glass might be a clue.

Do not Cross!

Can you help the firefighters keep this part of the road safe? Lift the flap to see how they stop people from accidentally walking onto the scene.

Keeping calm

A fire can be quite scary. The people in the bakery had to leave in a rush. This firefighter is handing out blankets to help everyone calm down.

Hose and water

The firefighters connect the hose to the fire engine's water tank and start to tackle the blaze.

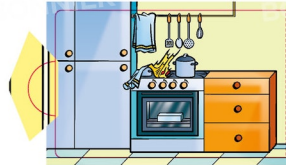
Which tool?

Firefighters need to choose the right tool for the job. Luckily, they're all close to hand on the engine.

fire hydrant

Hose





The cones and safety tape tell people that the scene is dangerous and they should not go any further.

This blaze started when a tea towel caught fire on an open flame. The firefighters will remind the bakery owner to be very careful around fire in the kitchen.

Luckily, no one is here – just the baker's cat, Crumpet! The firefighters will take her outside to be looked over by a vet.

Sometimes firefighters need to break a window or door to help the water reach the blaze. This is why they need all sorts of tools with them.

CLEAN UP

Phew! The fire at the bakery has been put out. But there is still plenty of work to be done back at the fire station.

Writing a report

A full report is written up after each emergency. This keeps a record of what happened on the day, why the fire started and how it was put out.



All better!

Sometimes firefighters get injured during an emergency. This firefighter has hurt his shoulder on the job.



Clean and shine

The firefighters give the engine a good clean and polish so that it is ready for the next job.

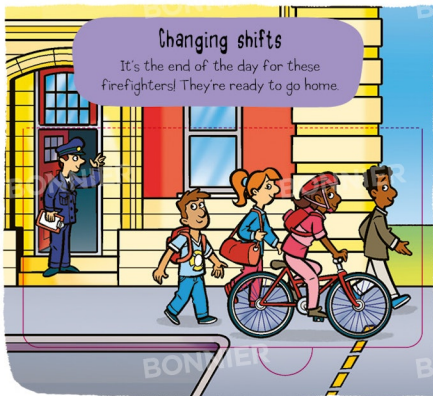


Equipment check

Each piece of equipment needs to be checked and put back in its place. If something has broken, it will need to be fixed or replaced.

Changing shifts

It's the end of the day for these firefighters! They're ready to go home.



Thank you!

A delivery has arrived at the station! It's from the bakery to say thank you for helping to save their shop!



What do they do?

Do you remember what these people do? Look back through the book to see if you can find them.



Fire Chief



Firefighter



Phone operator



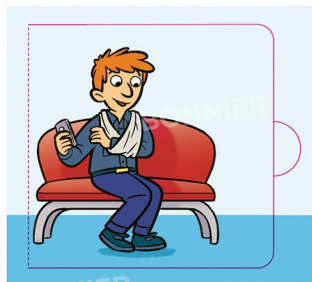
Navigator



Helicopter pilot



Fire victim



The fire chief will make
sure each firefighter
gets the help they need.
The doctor has put this
firefighter's arm in a sling.
All better!

What a yummy present!
People like to thank
firefighters with cards
and gifts to let them know
how much their hard work
is appreciated.

As they leave, a different group
of firefighters will come in for
their shift. What emergency will
they tackle next?