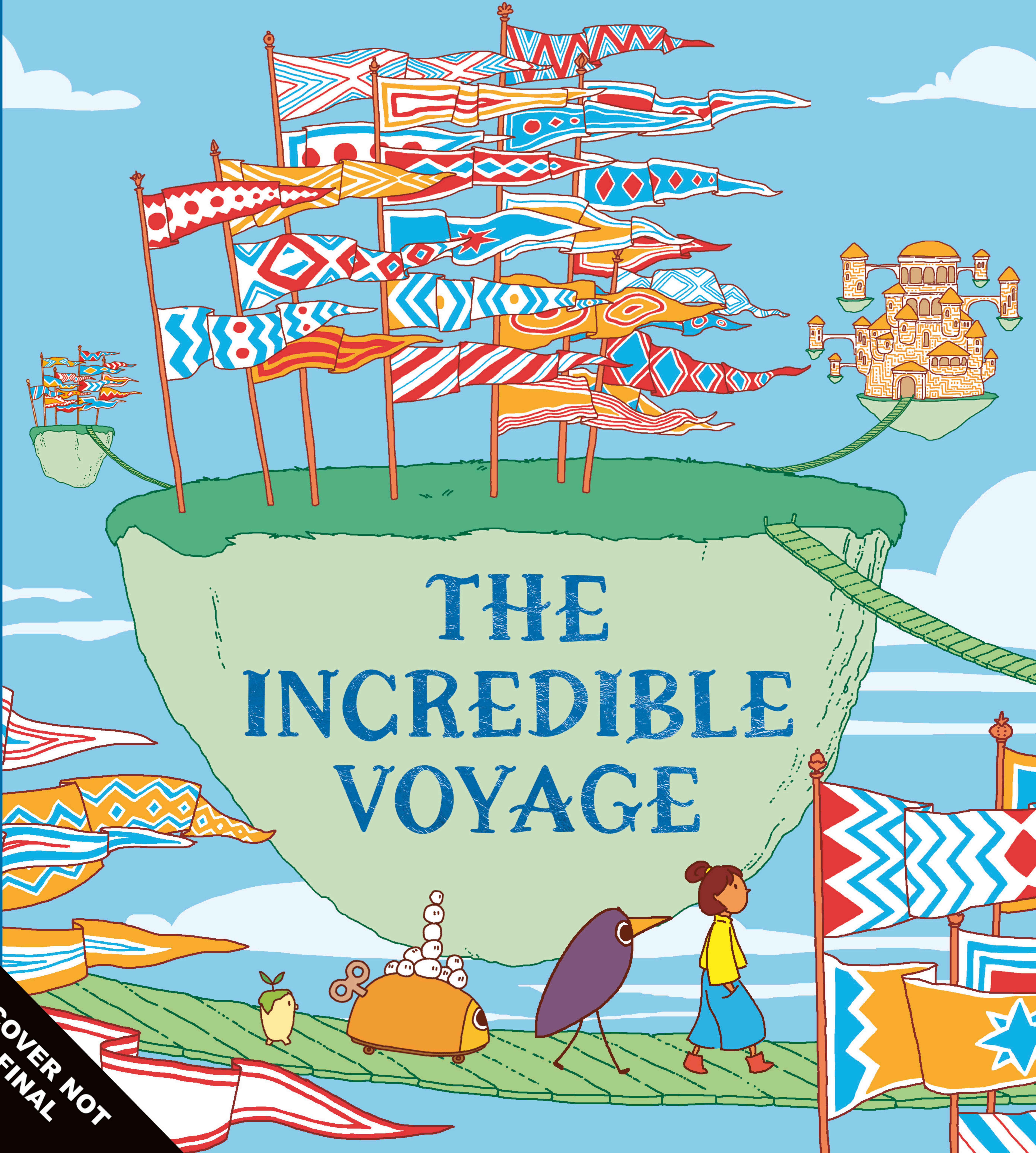


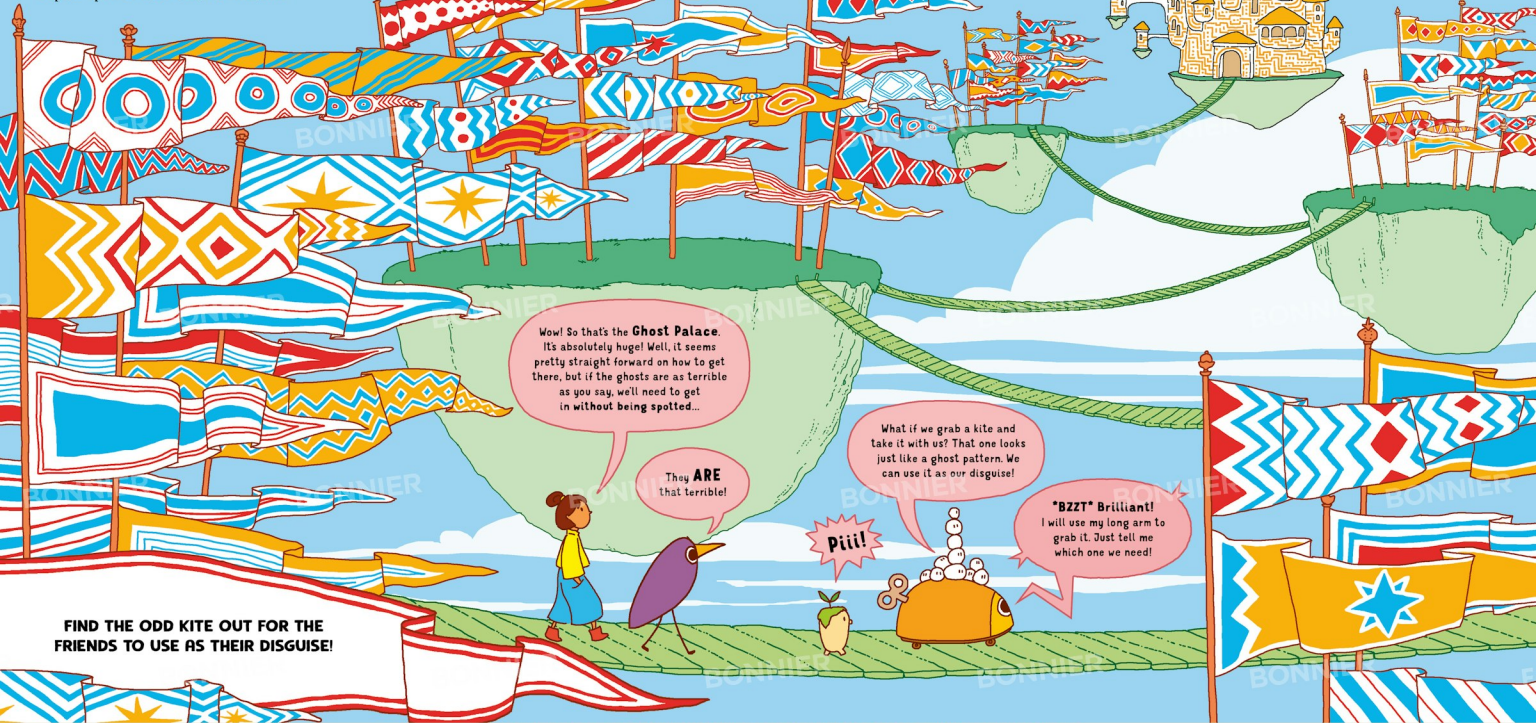
Aleksandra Arłymowska

THE
INCREDIBLE
VOYAGE

COVER NOT
FINAL



Leaving the forest with a new friend in tow, Sophie, the Bird, the Mechanical Beetle, the Little Ones and the Rock Baby, too, all trundled along. After several winding roads spiralling around hillsides and many complaints from the Bird about his tired feet, they made it to a clearing quite high in the clouds. There in the distance, Sophie spotted their final destination.



Wow! So that's the **Ghost Palace**. It's absolutely huge! Well, it seems pretty straight forward on how to get there, but if the ghosts are as terrible as you say, we'll need to get in **without being spotted**...

They **ARE** that terrible!

What if we grab a kite and take it with us? That one looks just like a ghost pattern. We can use it as our disguise!

Piii!

"BZZT" Brilliant! I will use my long arm to grab it. Just tell me which one we need!

FIND THE ODD KITE OUT FOR THE FRIENDS TO USE AS THEIR DISGUISE!

The kite with the ghost pattern was the perfect disguise, and Sophie, the Bird, the Little Ones and the Rock Baby stacked themselves on top of the Mechanical Beetle's back and shrouded themselves with the cloth. They weaved stealthily through the castles winding corridors, avoiding being spotted at all costs. Until, of course, they reached the ballroom – which was full of ghosts!

Shhh!
They're here!

Piii!

How are we going to get past this room? The ghosts are moving so strangely... like a pattern! Maybe they're dancing?

Ooh!
Let's find a partner to dance with. Then we can dance to the other side of the room!

BZZT Excellent!
So, which one is our dance partner?



FIND THE GHOST IN THE CROWD WITH NO DOTS OR TRIANGLES IN ITS PATTERN, THEN DANCE WITH IT ACROSS THE BALLROOM!

The fearless gang swayed through the crowded ballroom, cautiously stepping in time, and making it to the other side. Slipping through a narrow doorway, they found themselves in a much quieter and more ominous room...

Wow! There are so many masks!

Aren't they scary and TERRIBLE?

Yes! And that's awesome!

Piii!

That's weird - the masks seem like they're looking at us... but three of them have no eye or mouth openings. Is that a sign?

"BZZT" Really? How odd. Let's take them with us - they could help with our disguise...

FIND 3 MASKS THAT DON'T HAVE EYE HOLES AND TAKE THEM WITH YOU.
NOW THEY WILL BE YOUR DISGUISE!

Sophie and her brave company, taking three masks with them, walked through corridors of the ghost castle until they reached a strange labyrinth defending the entrance to the farthest room.

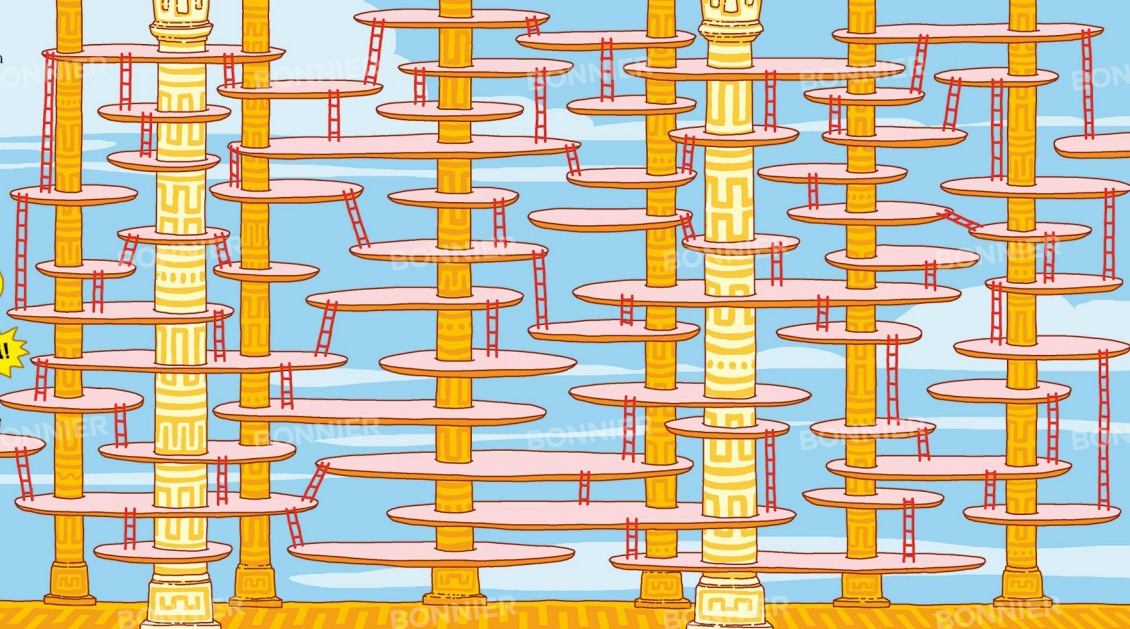
What an intriguing maze!

Are we lost?

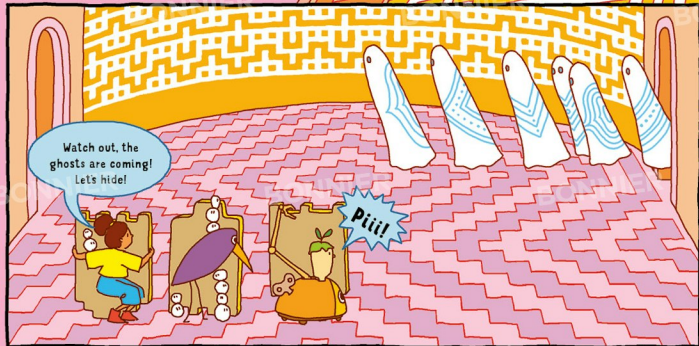
"BZZT" Indeed, but which way should we go?

Piii!

FIND THE WAY UP AND DOWN THE LADDERS TO GET TO THE EXIT!

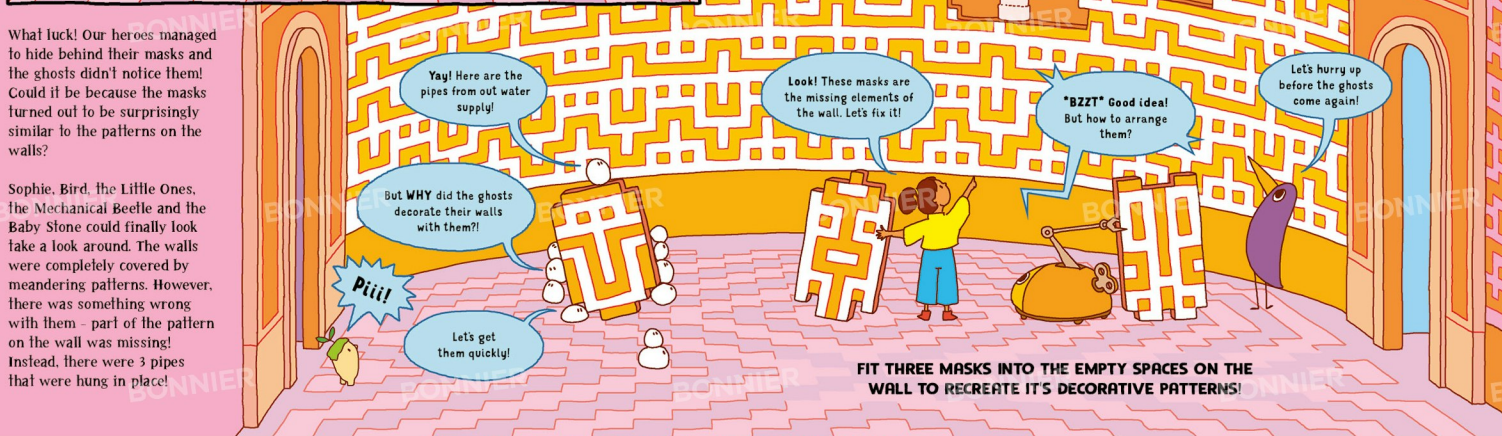


Having found the right way through the maze, they reached an oval-shaped room. Suddenly a few ghosts came passing by...



What luck! Our heroes managed to hide behind their masks and the ghosts didn't notice them! Could it be because the masks turned out to be surprisingly similar to the patterns on the walls?

Sophie, Bird, the Little Ones, the Mechanical Beetle and the Baby Stone could finally look like a look around. The walls were completely covered by meandering patterns. However, there was something wrong with them – part of the pattern on the wall was missing! Instead, there were 3 pipes that were hung in place!



FIT THREE MASKS INTO THE EMPTY SPACES ON THE WALL TO RECREATE ITS DECORATIVE PATTERNS!