



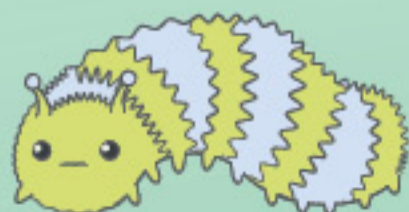
step-by-step

DRAW KAWAII

CUTE ANIMALS



by
ISOBEL
LUNDIE



DRAW KAWAII CUTE ANIMALS



Hatch

First published in the UK in 2022
by The Salariya Book Company Ltd
This edition published in the UK in 2024 by Hatch Press,
an imprint of Bonnier Books UK
4th Floor, Victoria House
Bloomsbury Square, London WC1B 4DA
Owned by Bonnier Books
Sveavagen 56, Stockholm, Sweden
www.bonnierbooks.co.uk

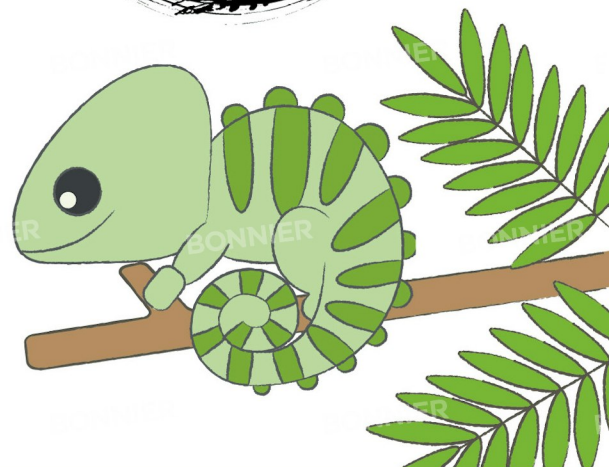
Copyright © 2024 by Hatch Press

1 3 5 7 9 10 8 6 4 2

All rights reserved

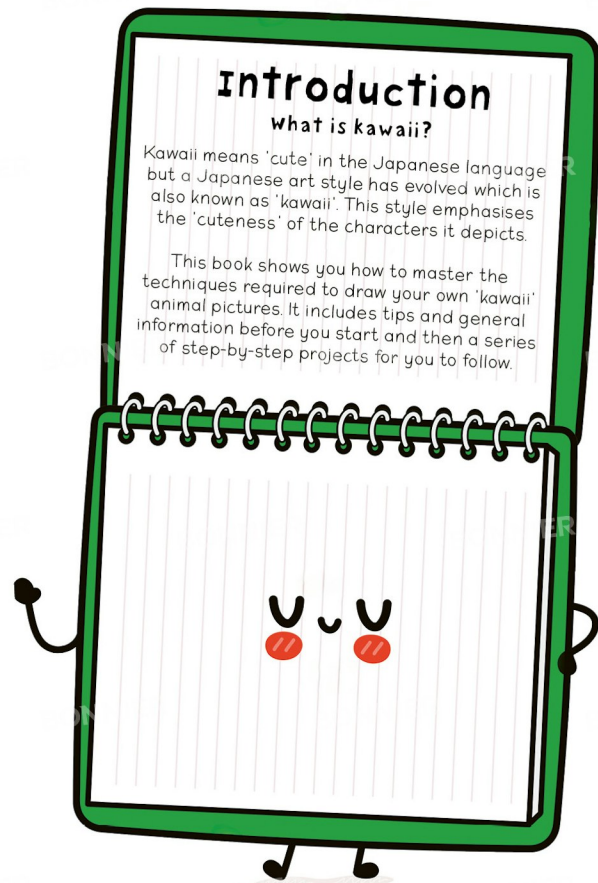
ISBN 978-1-80078-993-7

Printed in India



contents

- 5. Introduction
- 6. Materials
- 8. Making everything cute
- 10. Adding features
- 12. Expressions
- 13. Mixed-up animals
- 14. Now it's your turn
- 16. Kawaii hippo
- 18. Kawaii chameleon
- 20. Kawaii moose
- 22. Kawaii bat
- 24. Kawaii rabbit
- 26. Kawaii toucan
- 28. Kawaii leopard
- 30. Kawaii panda
- 32. Kawaii raccoon
- 34. Kawaii fox
- 36. Kawaii octopus
- 38. Kawaii cat
- 40. Kawaii lion
- 42. Kawaii giraffe
- 44. Kawaii turtle
- 46. Kawaii narwhal
- 48. Kawaii hamster
- 50. Kawaii seal
- 52. Kawaii chick
- 54. Kawaii dog
- 56. Kawaii squirrel
- 58. Kawaii olm
- 60. Kawaii otter
- 62. Kawaii caterpillar
- 64. Glossary



Materials



Pencil

Drawing with an HB pencil makes it easy to erase any unwanted excess lines.

Materials

The ideas in this book can be done in different ways and with different materials. Here are some suggestions.

coloured paper
Try drawing kawaii animals on coloured paper!



coloured pencils

Coloured pencils are ideal for shading and creating texture. Take a look at this cat drawing.

Labels

Make your own kawaii labels to add to presents.



stickers
Draw onto stickers to make cute drawings for your friends!



ink

Use a small brush to make cute inky paintings!



sketchbook

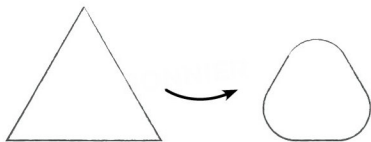
Use a sketchbook so that you can keep all your drawings together.



Making everything cute

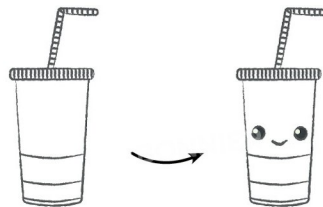
Soften shapes

Rounding off the points of a triangle softens its shape. Try softening the edges of shapes when drawing your kawaii characters.



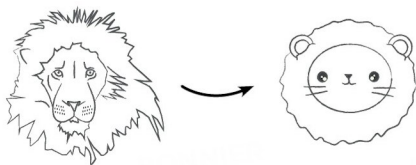
Add a cute face

You can make almost anything cute by drawing an adorable cartoon face on it.



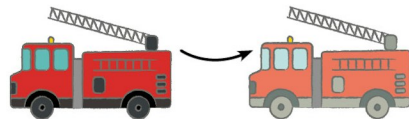
Simplify drawings

Make your drawing cuter by simplifying it down to its key features. This way you can make almost anything cute!



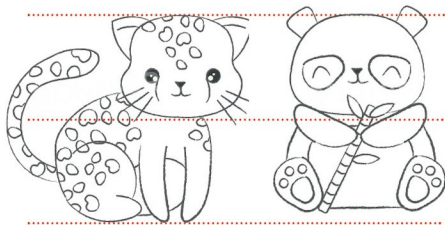
colours to soften

Pastel colours are softer. Try using less saturated shades to make your characters cuter.



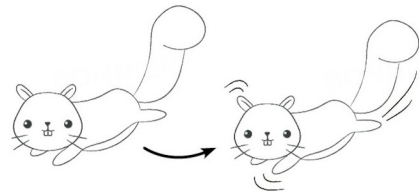
Proportions

The kawaii body should be proportioned as shown. A large head, with a short body and short legs.



Motion lines

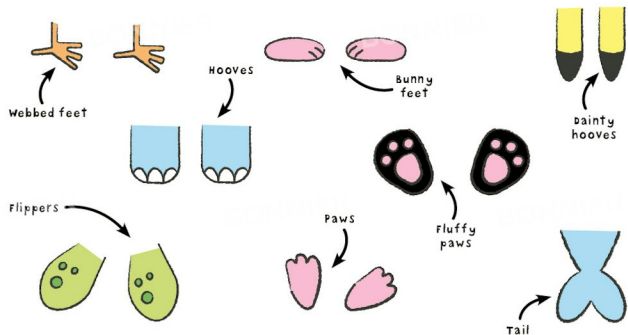
Adding motion lines in this way is a simple and effective way to convey movement in a drawing.



Adding features

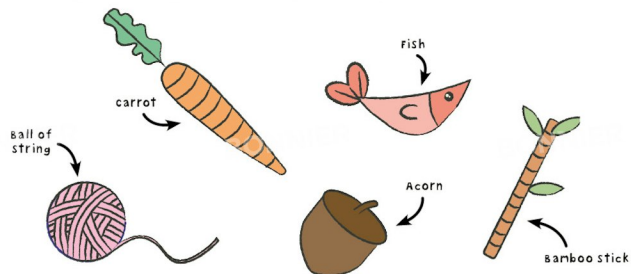
cute feet

Adding adorable feet to your characters is a good way to make them look even cuter.



cute stuff

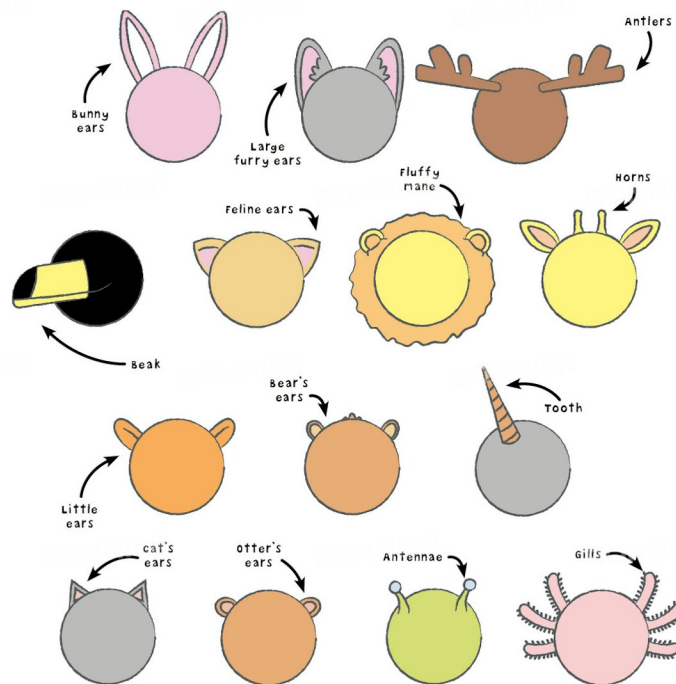
Don't forget that objects can help to bring a character to life!



10

cute features

Animals have all manner of distinguishing features, from fluffy ears to beaks! You'll need to get to know them all in order to draw them.



11

Expressions

changing your character's expression adds personality.



Happy

Draw happy
'U'-shaped eyes.



Sad

Draw curved
eyebrows.



Angry

Draw diagonal
eyebrows.



confused

Draw one
eyebrow raised.



Scared

Raise both
eyebrows.



Excited

Draw the mouth
wider.



crying

Draw in flowing tears.



Tired

Draw the eyes closed.

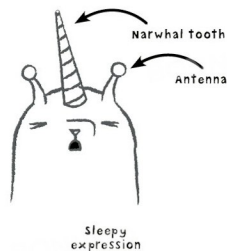


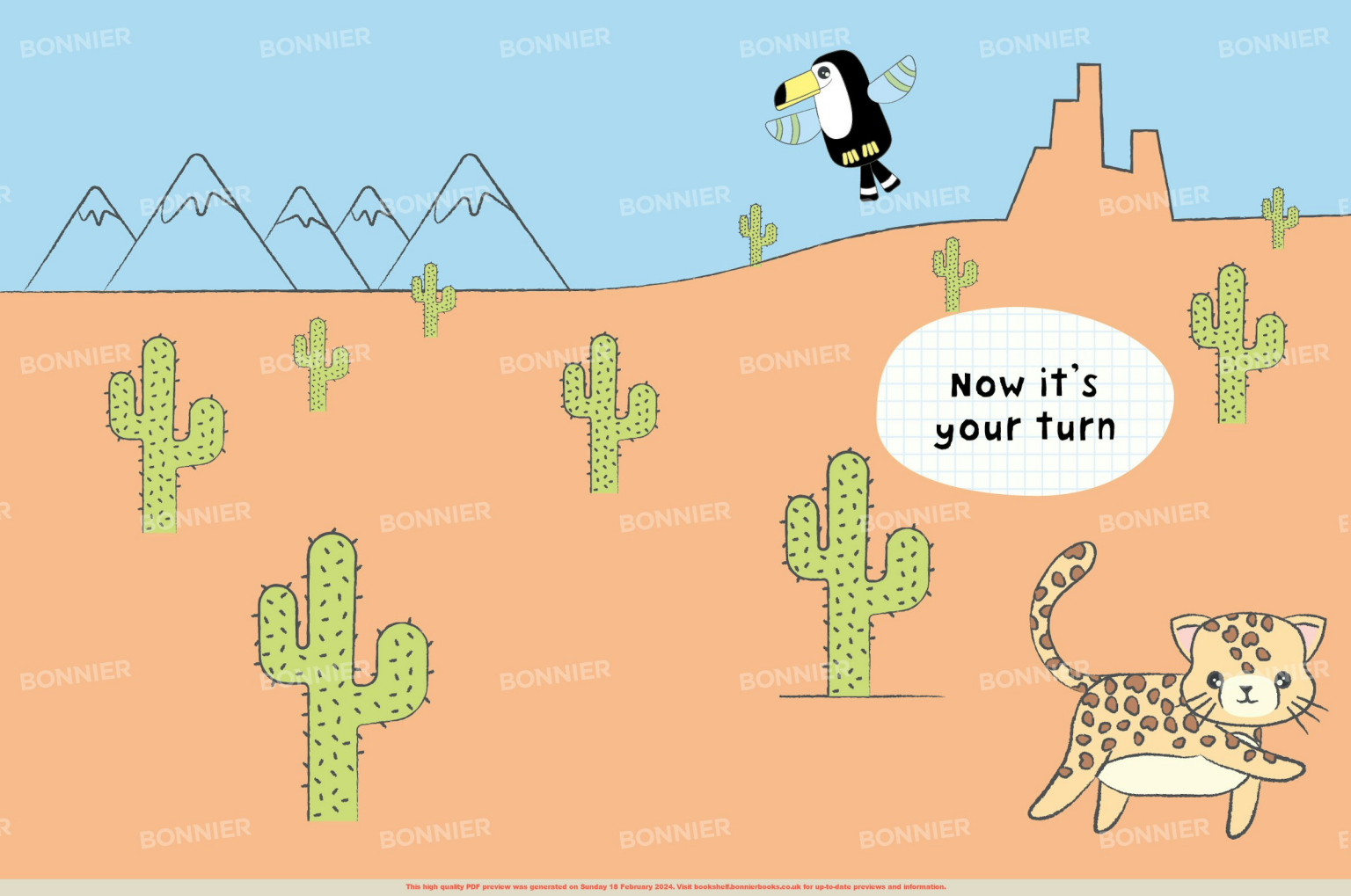
Embarrassed

Draw a pursed mouth.

Mixed-up animals

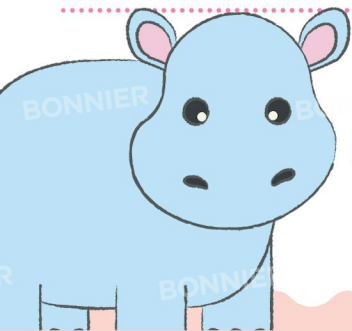
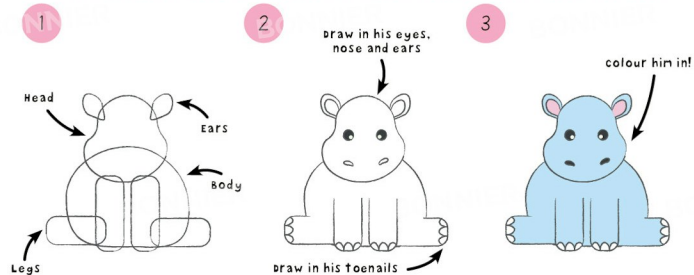
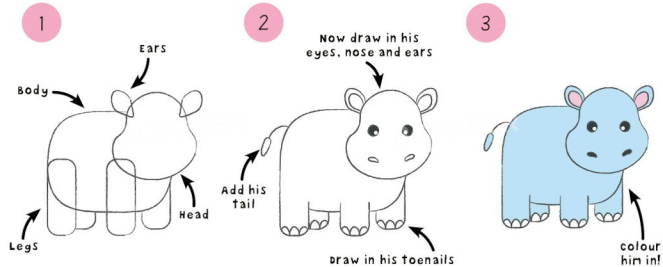
can you use the features on the
previous page to create your own
mixed-up animal faces?





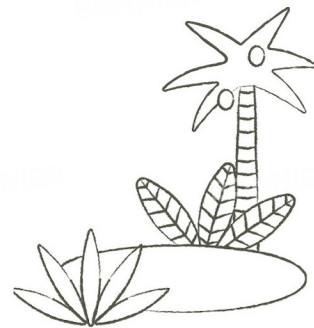
Now it's
your turn

Kawaii hippo



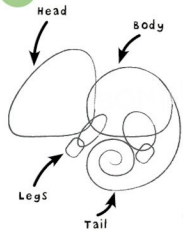
Why not draw your kawaii hippo splashing about in a lake to keep cool?

draw your own hippo! →

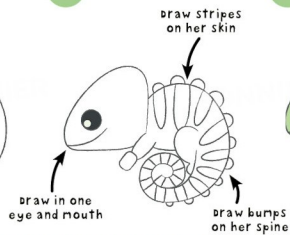


Kawaii chameleon

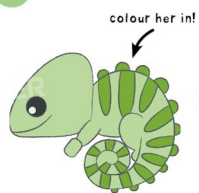
1



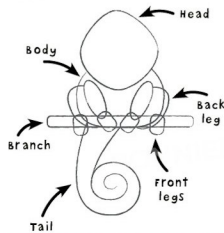
2



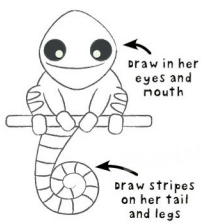
3



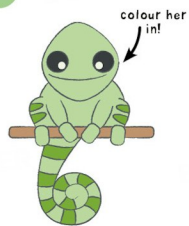
1



2

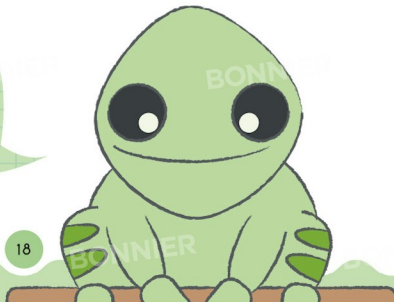


3



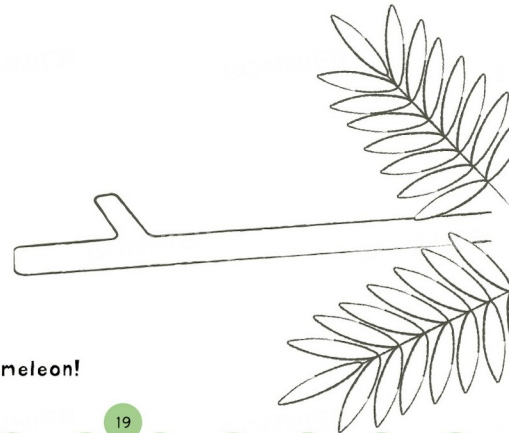
Why not draw your kawaii chameleon sitting on a branch in the rainforest?

18



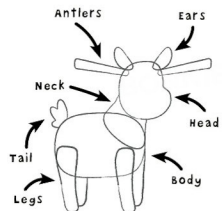
draw your own chameleon!

19



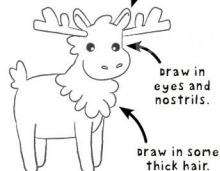
Kawaii moose

1

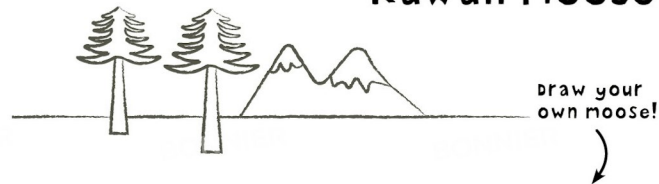


2

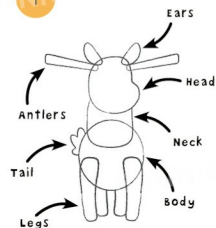
finish drawing his antlers and ears.



3

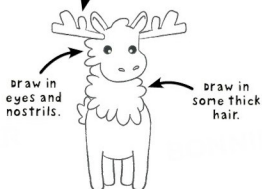


1



2

Finish drawing his antlers and ears.



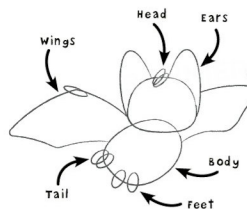
3



Why not draw your kawaii moose wandering through a snowy landscape?

Kawaii bat

1



2

draw in his eyes, nose, teeth and hairy ears.



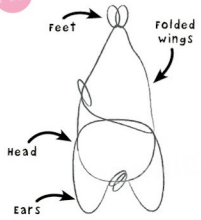
3

colour him in!



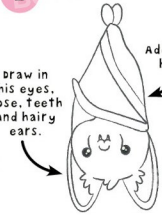
Add details to his wings.

1



2

draw in his eyes, nose, teeth and hairy ears.



3

colour him in!



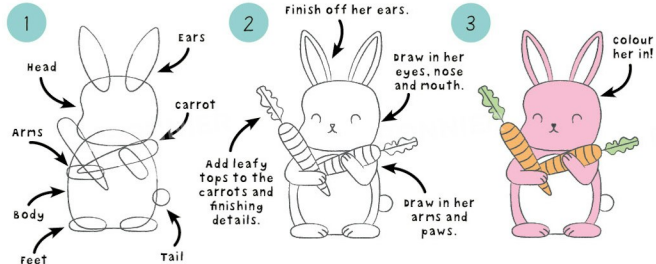
Add details to his wings.

draw your own bat.

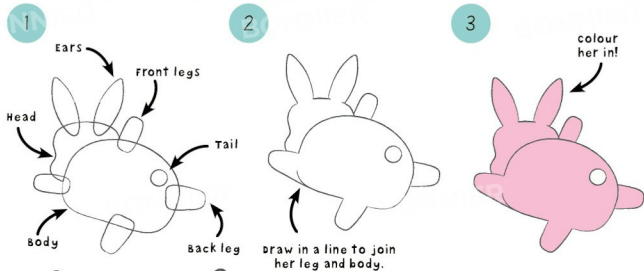


Why not draw lots of kawaii bats hanging upside down from a cave roof?

Kawaii rabbit

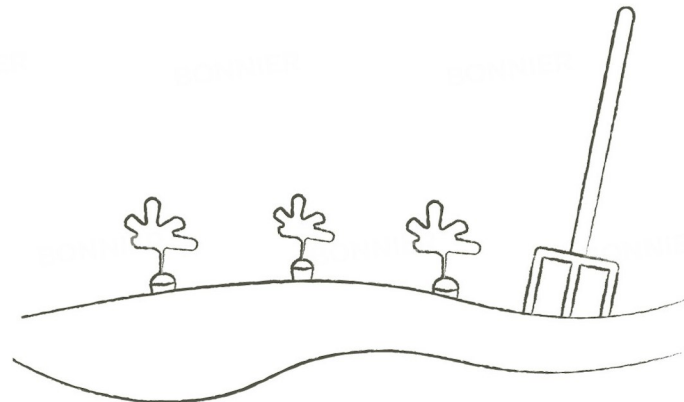


draw your own rabbit. →



24

Your kawaii rabbit could be drawn in a vegetable patch, munching on her carrot.

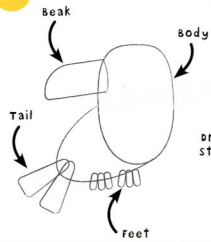


25

Kawaii toucan

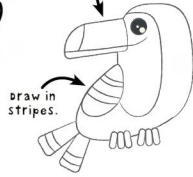


1

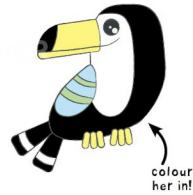


2

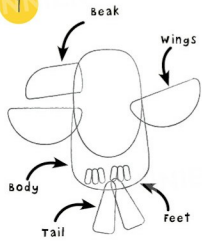
draw in an eye and add detail to her beak.



3

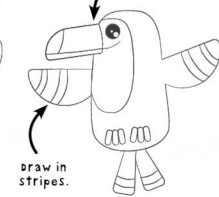


1

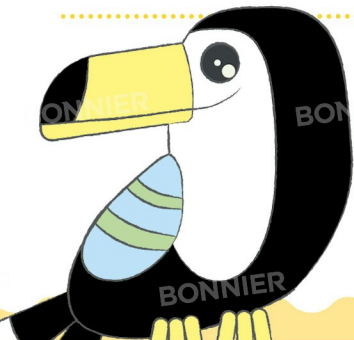
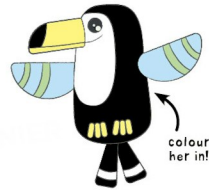


2

draw in an eye and add detail to her beak.



3



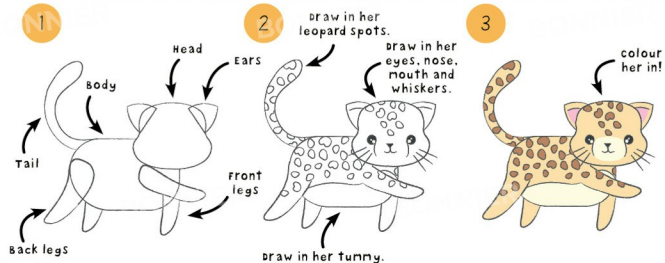
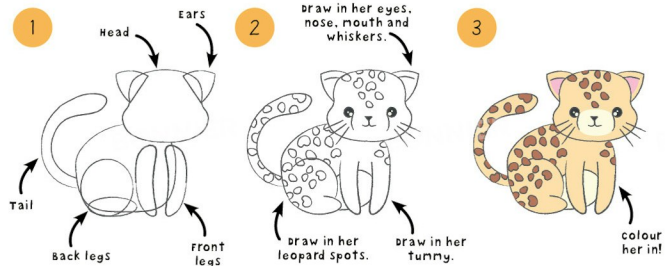
26

Why not draw your kawaii toucan flying through the rainforest?

draw your own toucan.

27

Kawaii leopard

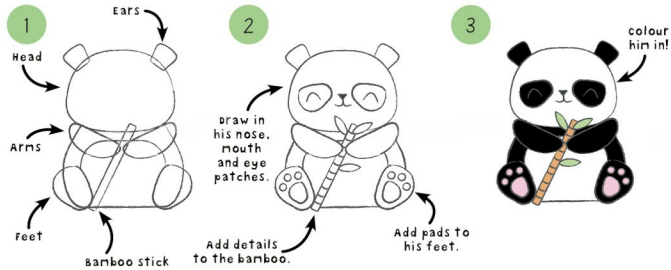


Why not draw your kawaii leopard sitting high up on a tree branch?

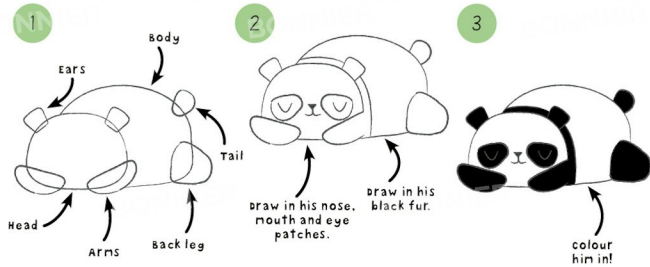


Draw your own leopard.

Kawaii panda

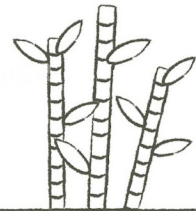


Draw your own panda.



30

Why not draw your kawaii panda munching his bamboo in a forest?

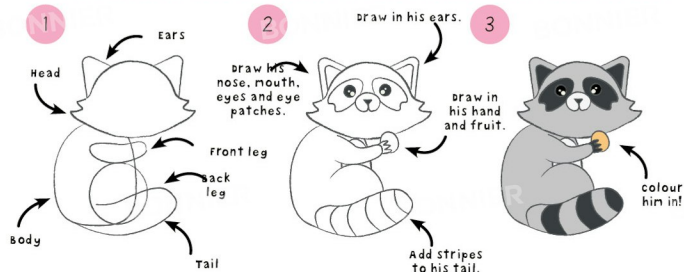
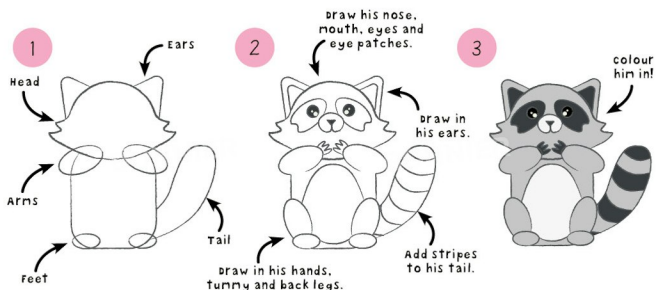


31

Kawaii raccoon



Draw your own
raccoon.

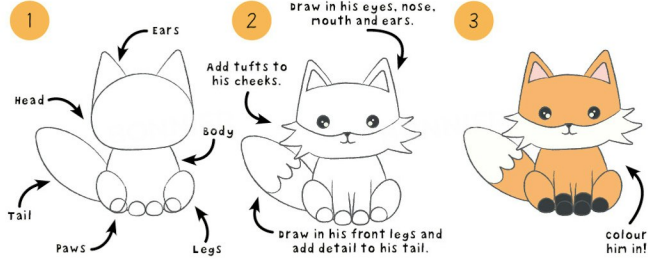


Why not draw
your kawaii
raccoon hunting
for food?

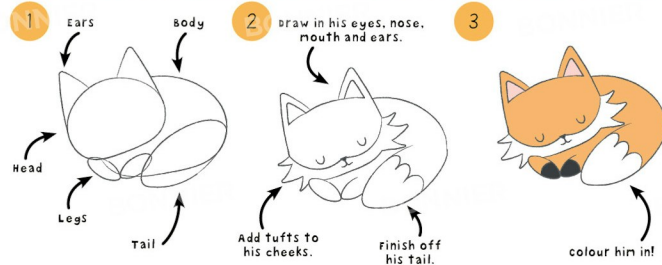


Draw your
own raccoon.

Kawaii fox



Draw your own fox.



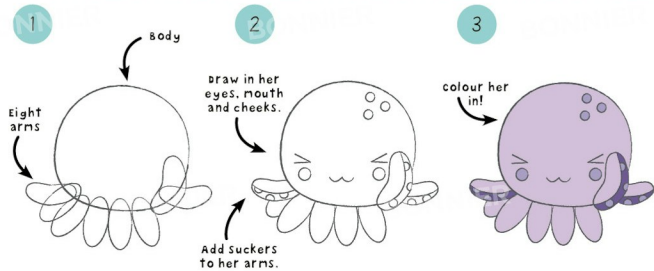
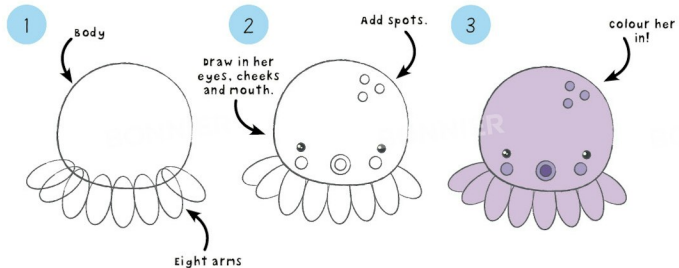
34

Why not draw your kawaii fox skulking down a street at night?



35

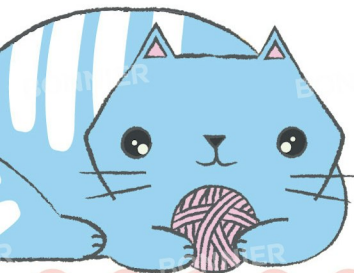
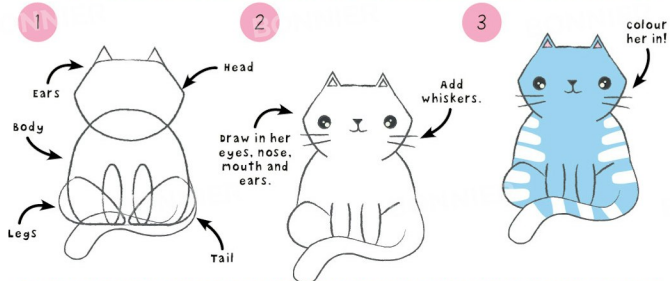
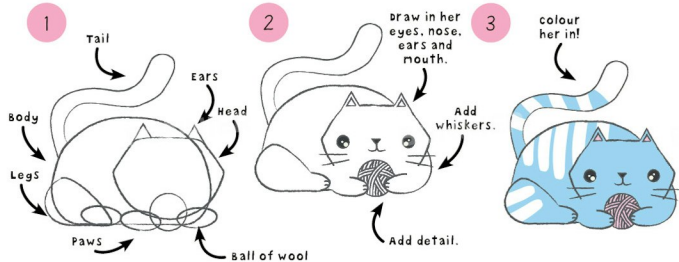
Kawaii octopus



Why not draw your kawaii octopus floating through an underwater landscape?

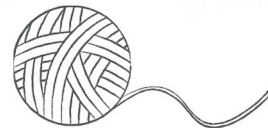


Kawaii cat

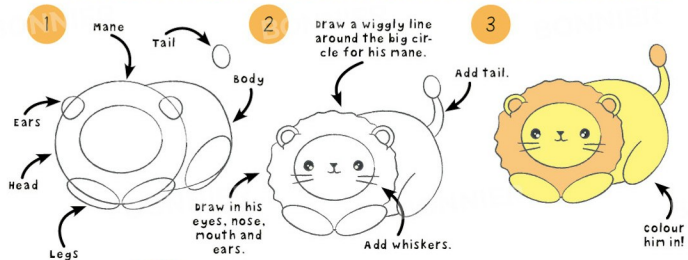
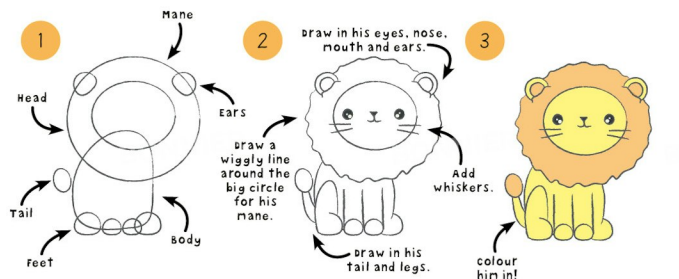


Why not draw your kawaii cat playing with her ball of wool or chasing a mouse?

draw your own cat.



Kawaii lion



40

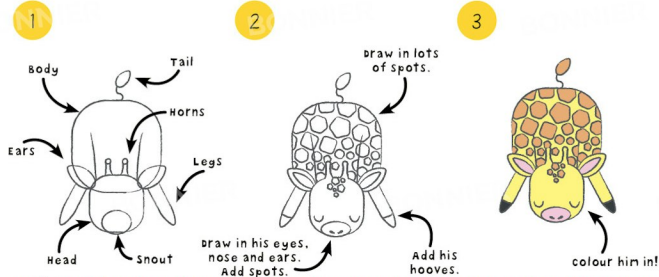
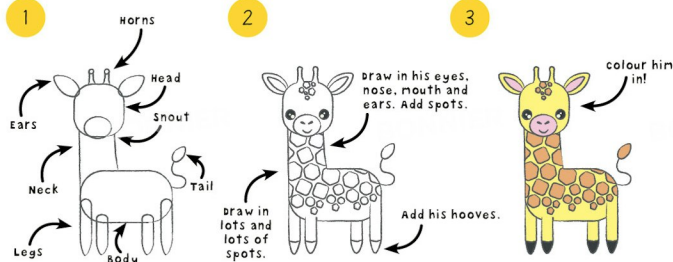
Why not draw your kawaii lion roaming through long grasses?

draw your own lion.

41

Kawaii giraffe

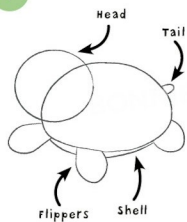
Draw your own giraffe.



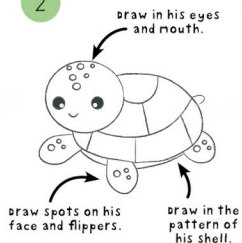
Why not draw your kawaii giraffe stretching up to eat leaves from a tall tree?

Kawaii turtle

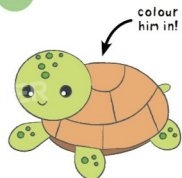
1



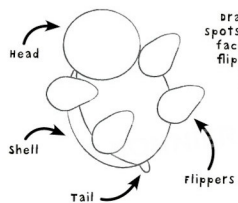
2



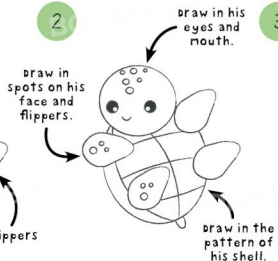
3



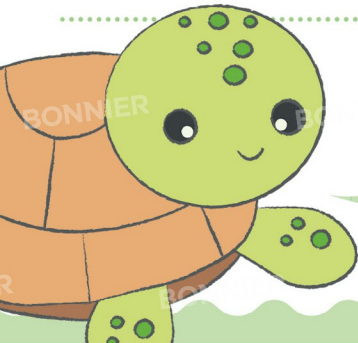
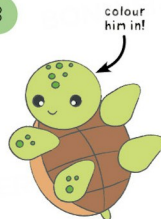
1



2



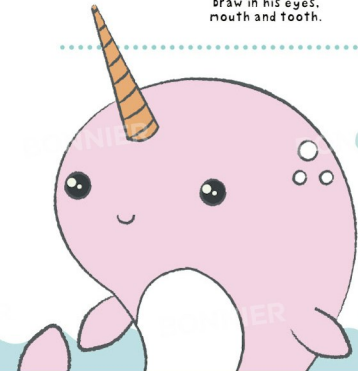
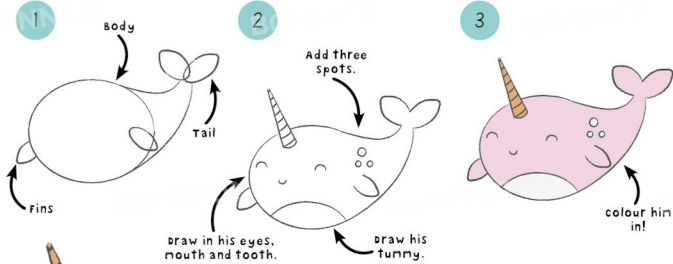
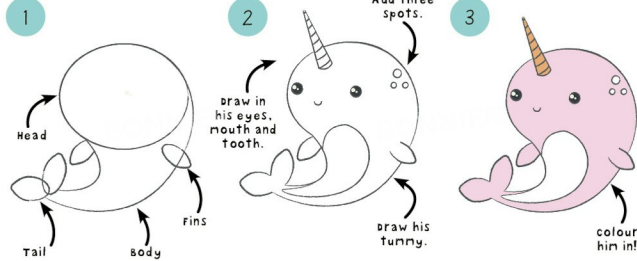
3



Why not draw your kawaii turtle swimming through the ocean?

Draw your own turtle.

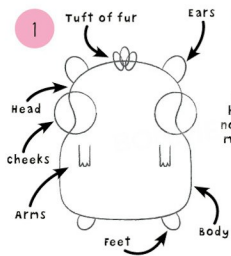
Kawaii narwhal



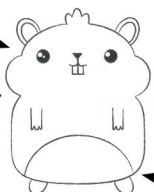
46

Why not draw your kawaii narwhal swimming up to the surface of the ocean?

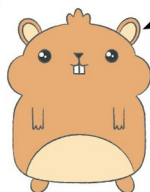
draw your own narwhal.



2 draw in his eyes, nose, ears, mouth and teeth.

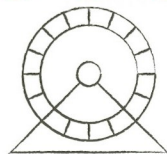


draw in his tummy.

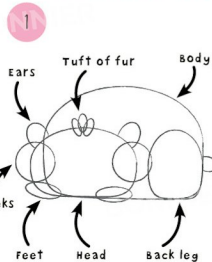


colour him in!

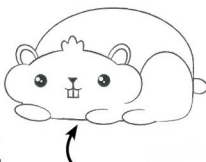
Kawaii hamster



Draw your own hamster.



2



draw in his eyes, nose, ears, mouth and teeth.

3

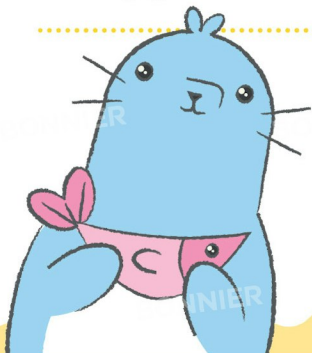
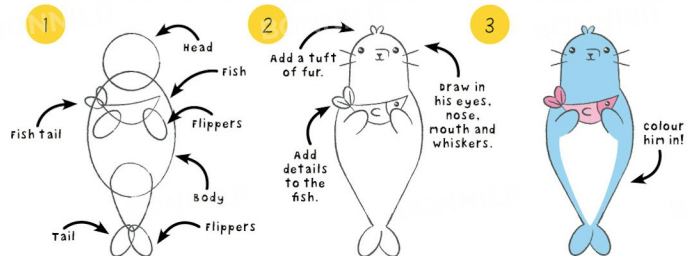
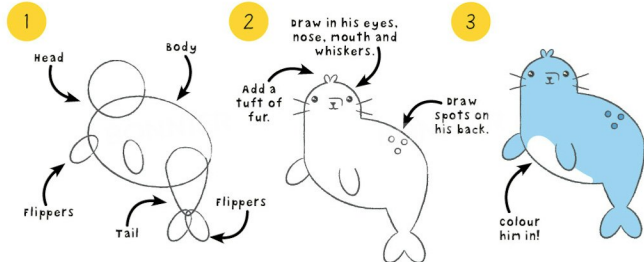


colour him in!



Why not draw your kawaii hamster running round and round in his hamster wheel?

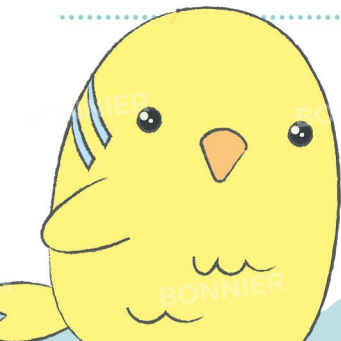
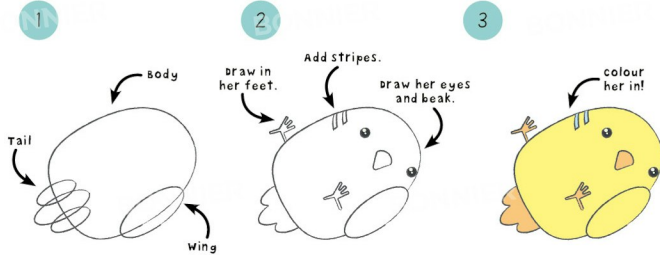
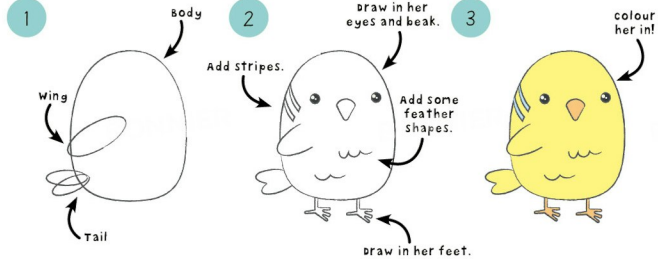
Kawaii seal



Why not draw your kawaii seal splashing about near the seashore?

draw your own seal.

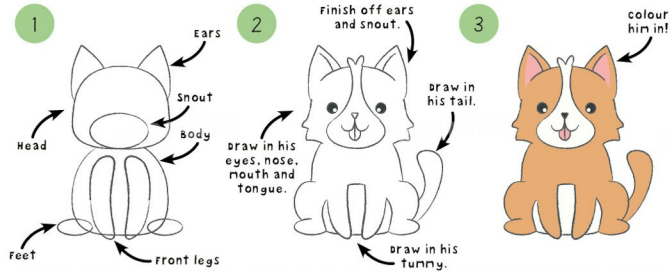
Kawaii chick



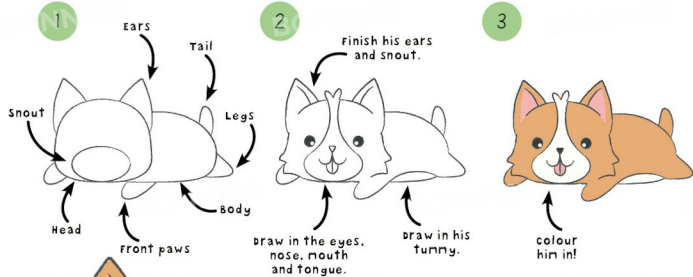
Why not draw lots of kawaii chicks cosying up together in the chicken coop?

draw your own chick.

Kawaii dog



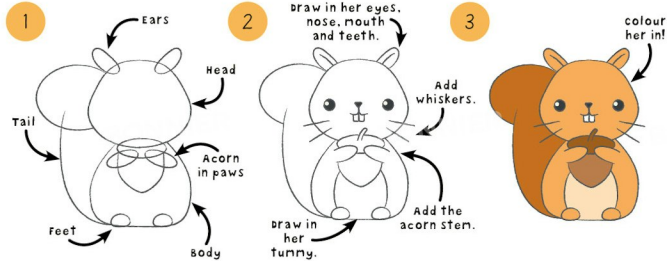
Draw your own dog. →



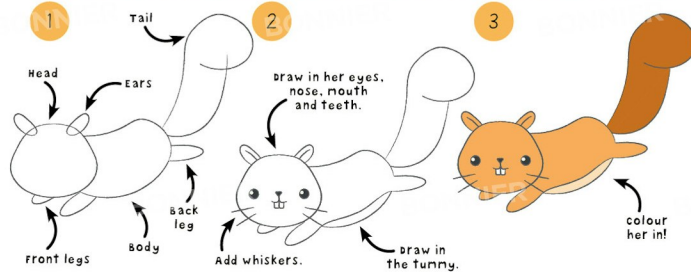
Why not draw your kawaii dog chasing a stick through the park?



Kawaii squirrel



Draw your own squirrel.



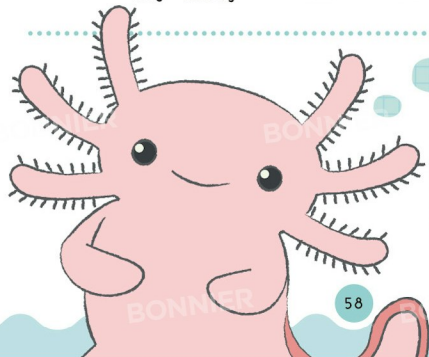
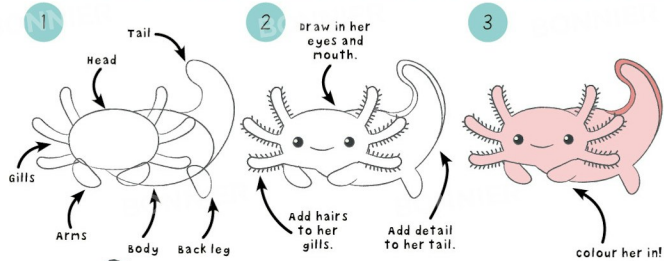
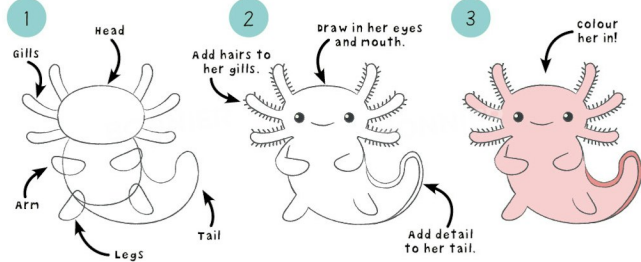
56

Why not draw your kawaii squirrel up in a tree, eating her acorn?



57

Kawaii olm



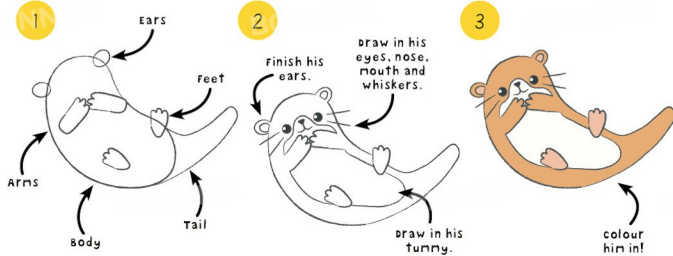
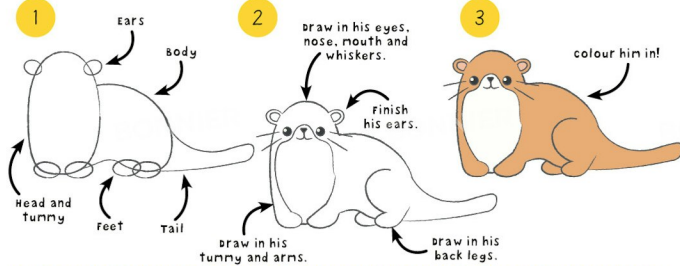
Why not draw your kawaii olm swimming in an underground lake in a cave?



↷
draw your own olm.

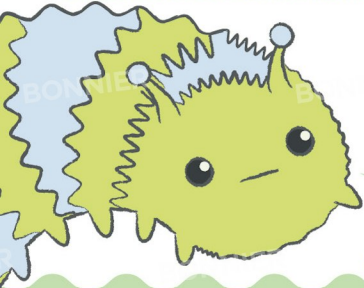
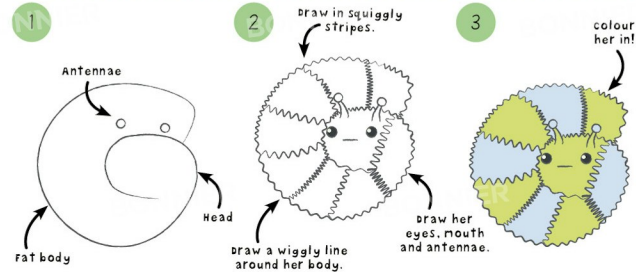
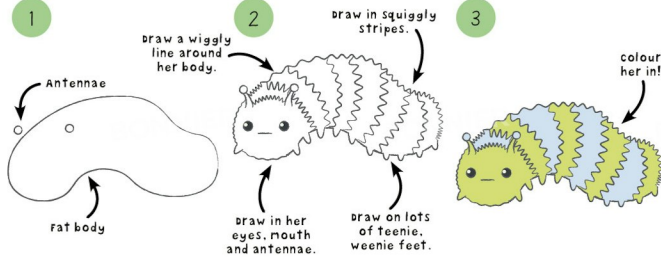
Kawaii otter

Draw your own otter.



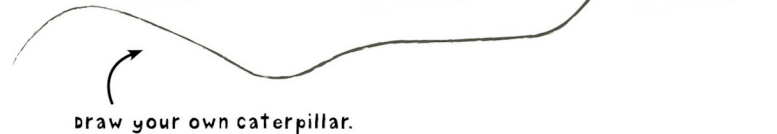
Why not draw your kawaii otter floating on his back in the water, relaxing?

Kawaii caterpillar



Why not draw your kawaii caterpillar munching her way along a leaf?

62



draw your own caterpillar.

63

Glossary

Antennae some insects and other species of animal have these appendages on their heads. They use them to gain sensory information about their environment.

Bamboo a type of very large, thick and woody grass.

Narwhal a species of small Arctic whale. The male has a long tusk extending in front of it.

Olm a blind salamander with white skin and external gills that can be found living in caves in south-eastern Europe.

Pastel shades of colour that are soft and gentle. Pastel colours are made with pastel crayons.

Toucan a large-billed, fruit-eating species of bird native to Central and South America.

Index

C
caterpillar 62–63

E
expressions 12–13

M
materials 6–7
moose 20–21

N
narwhal 13, 46–47

O
octopus 36–37
olm 58–59

P
proportions 8

R
rabbit 24–25

T
toucan 26–27
turtle 44–45