

Disney · PIXAR
**INSIDE
OUT**

WHERE'S JOY?

A SEARCH AND FIND ACTIVITY BOOK

14 SCENES TO EXPLORE



First published in the UK in 2025 by Studio Press,
an imprint of Bonnier Books UK
5th Floor, HYLO, 105 Bunhill Row, London, EC1Y 8LZ

www.bonnierbooks.co.uk

Copyright © 2025 Disney Enterprises, Inc., and Pixar
All rights reserved.

All rights reserved. No part of this publication may be reproduced or transmitted in any form or by any means, electronic, or mechanical, including photocopying, recording, or by any information storage and retrieval system, without permission in writing from the publisher.

3 5 7 9 10 8 6 4 2

ISBN 978-1-83587-233-8

Text by Antonio Recupero (Arancia Studio)
Artwork by Emiliano Serreli & Stefano Porcu, Andrea Izzo & Davide Sorio (Arancia Studio)
Graphic design by Fabrizio Verrocchio & Agnese Eterno (Arancia Studio)
Cover Designed by Alessandro Susin
Production by Giulia Caparrelli

FSC DUMMY

The authorised representative in the EEA is Bonnier Books UK (Ireland) Limited.
Registered office address: Floor 3, Block 3, Miesian Plaza
50–58 Baggot Street Lower,
Dublin 2, D02 Y754, Ireland.
compliance@bonnierbooks.ie

A CIP catalogue record for this book is available from the British Library
Printed in Lithuania

BURSTING WITH EMOTIONS!



JOY

When a smile appears on Riley's face, Joy is the one responsible. Golden and shimmering, Joy helps Riley see the positive things in life.



SADNESS

When the mood turns blue and a good cry is needed, Sadness is in charge. She is so important, because every feeling has its value, even the saddest ones.



ANGER

This guy is always ready to fight for what's just and fair. He tries to keep his cool, but sometimes he just needs to erupt. Whether at the family dinner table or on the hockey rink, he won't hold back.



FEAR

Fear is always looking out for Riley's safety. He is overprotective and always on edge, trying to keep Riley away from risky situations and imminent danger.



DISGUST

Using her refined tastes, Disgust's job is to keep Riley from being poisoned physically or socially. From avoiding broccoli to cringy comments, Disgust works to keep Riley away from all things icky.



ENVY

Tiny yet determined, Envy helps Riley figure out what she wants. But Envy often gets jealous and distracted by what everyone else has.



EMBARRASSMENT

Big and extremely shy, his face is often almost entirely hidden in his hoodie. He ends up blushing a lot and flopping onto the Headquarters console when Riley feels any social awkwardness.



ANXIETY

Puberty's here, with a whole new range of Emotions! Anxiety is certainly the most active — and nervous — among them. She wants to protect Riley from dangers she can't see, but sometimes Anxiety can go a little too far.



ENNUI

She prefers to stay on her couch in Headquarters. She's too bored to get up and doesn't care about anything, so she drives the console by using an app on her phone.

ENTER THE MIND WORLD

Riley's mind is a wonderful and complex place, with so many different areas, each with its own important function. The Emotions are exploring. Find them in the various parts of the mind and spot some special mixed-emotion memories and objects that Joy and the others may need.

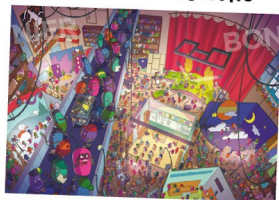
HEADQUARTERS



IMAGINATION LAND



DREAM PRODUCTIONS



LONG TERM MEMORY



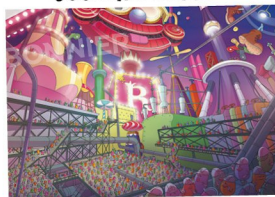
IMAGINATION LAND UNDER CONSTRUCTION



SUBCONSCIOUS



GOOFBALL ISLAND



THE EMOTIONS' BEDROOM



STREAM OF CONSCIOUSNESS



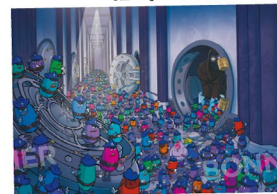
FORT PILLOWTON



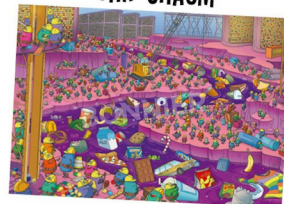
EXPANDED HEADQUARTERS



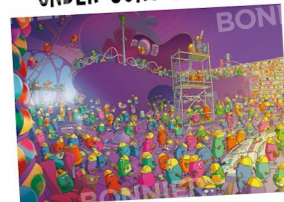
THE VAULT



SAR-CHASM



HEADQUARTERS UNDER CONSTRUCTION



HEADQUARTERS

When eleven-year-old Riley is about to wake up, the core Emotions are preparing to start the day, too. Can you see Joy, Sadness, Disgust, Anger and Fear getting ready to work? The Mind Workers are also preparing some upgrades to Headquarters. A special joyous memory mixed with some fear got lost and needs to get to Long Term Memory. Can you find it?



LONG TERM MEMORY

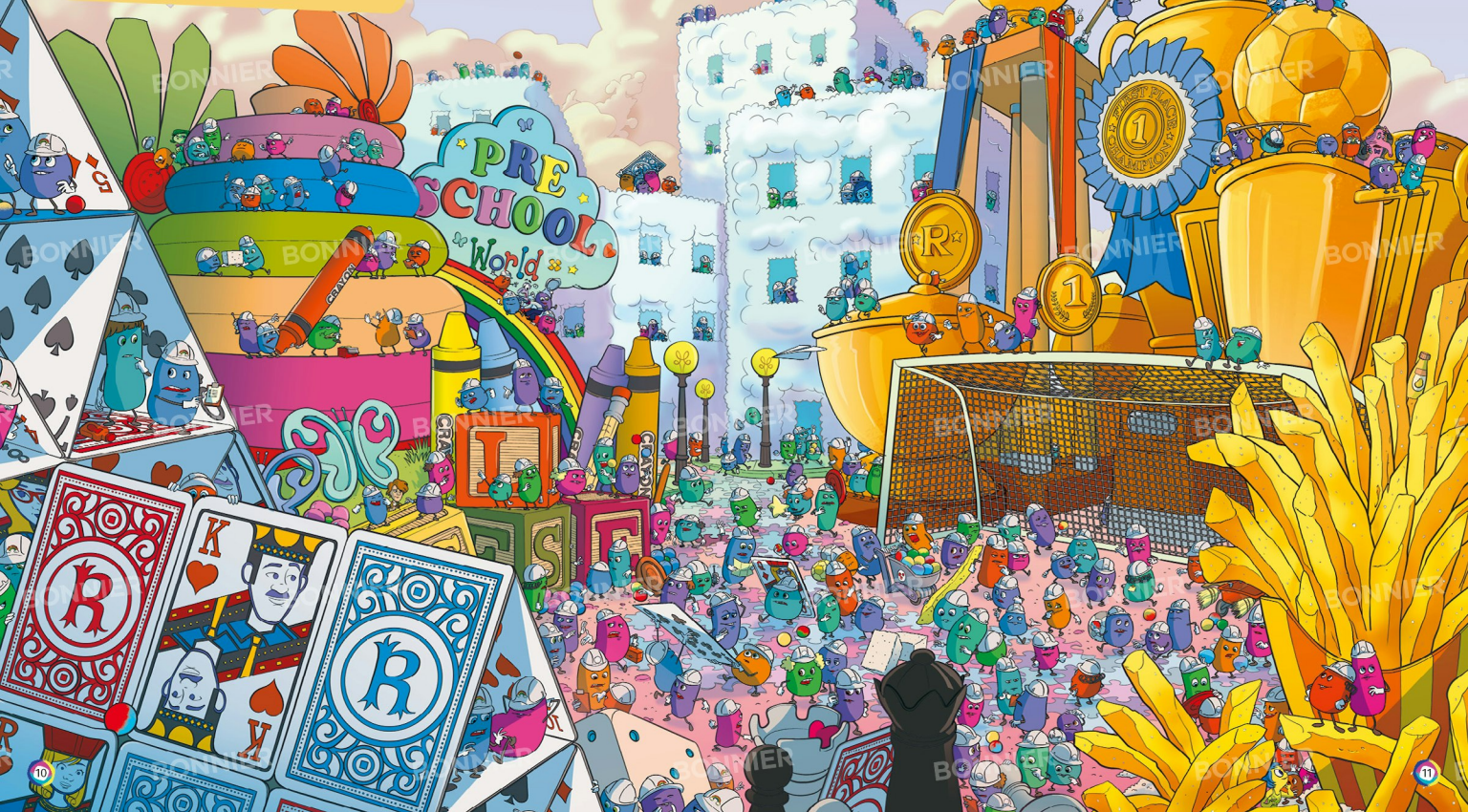
The Five Emotions are looking for an important joyful and sad memory that accidentally ended up among the Long Term Memory stacks. Can you find it — and the Emotions — before a Forgetter sends the memory to the dump? Luckily, these memory erasers are looking for their equipment, so the Emotions have a little time! Bing Bong has also joined the search. Where is he?



IMAGINATION LAND

Riley has always had a vivid imagination, and it's a delight for the Emotions to visit it! Can you find them as they wander through French Fry Forest, Cloud Town and beyond? They're looking for an angry and disgusted memory that rolled through.

Do you see it? Bing Bong loves Imagination Land, too! He's searching for his trusty rocket wagon. Can you spot them both?



IMAGINATION LAND UNDER CONSTRUCTION

As Riley gets older, her childhood fantasies get torn down to make room for new ones! Find the Emotions as they search through the demolition for a sad and fearful memory that got lost. Can you find that memory, too? Can you see Bing Bong in the rubble? He's been crying candy, as some of his favourite places are now gone. Look for the pile of candy, too.





DREAM PRODUCTIONS

The Emotions are visiting the busy and bustling Dream Productions. The studio crew is hard at work preparing many different dreams for Riley tonight. The Emotions are hoping to see the star of Riley's favourite dreams, Rainbow Unicorn! Can you spot them all? Somehow a joyful and angry memory ended up somewhere in the studio. Where is it?

SUBCONSCIOUS

The Emotions took a wrong turn on their journey through the Mind World and ended up in the Subconscious, the place where all of Riley's worst fears are hidden. They need to find a fearful and disgusted memory that's lost in here somewhere. Can you find them and the memory? Careful not to wake up Jangles the Clown!



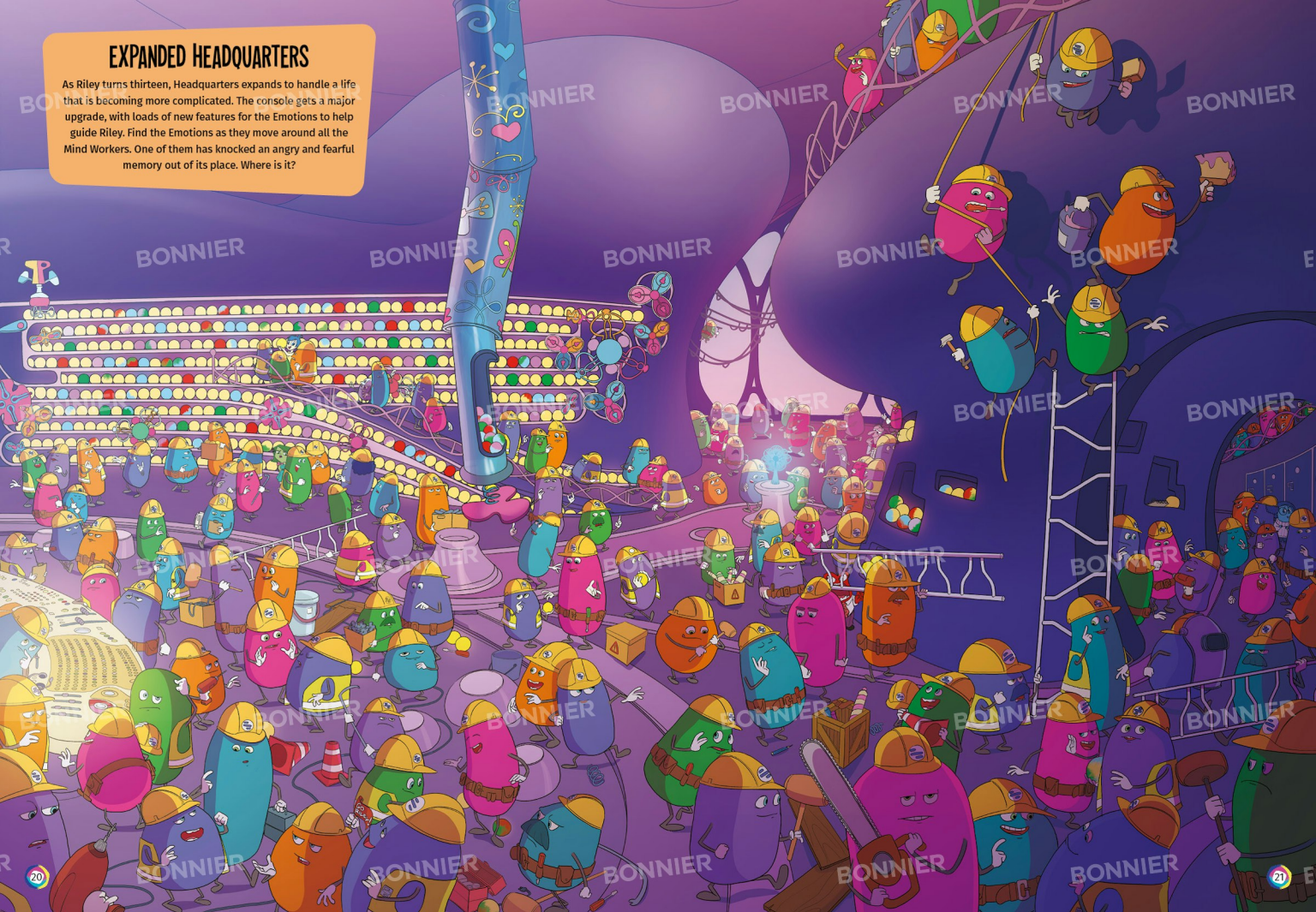
GOOFBALL ISLAND

Riley is growing up, and her personality is getting more complex. New personality islands are popping up, but luckily Goofball Island has stuck around. Can you find the Emotions lost among the hilarious and silly goofs and gags? There's also a really funny memory somewhere that's a blend of joy and disgust. Can you find it? It always makes Riley laugh.



EXPANDED HEADQUARTERS

As Riley turns thirteen, Headquarters expands to handle a life that is becoming more complicated. The console gets a major upgrade, with loads of new features for the Emotions to help guide Riley. Find the Emotions as they move around all the Mind Workers. One of them has knocked an angry and fearful memory out of its place. Where is it?



THE EMOTIONS' BEDROOM

When Riley falls asleep, the Emotions get to rest up, too. They each have their own bedtime routine and special items to decorate their sleeping nook. But they're not all in bed yet. Where are they? The Mind Workers picked a bad time to make some upgrades here, and a rare memory of ennui and envy rolled in with them. Can you spot it?



THE VAULT

Now that the new Emotions are part of Riley, the core Emotions are showing them around the Mind World. Here at the Vault, where Riley keeps all her secrets, Embarrassment has lost sight of the others. Can you spot the other Emotions? There's also an embarrassing and anxious memory somewhere. Do you see it?



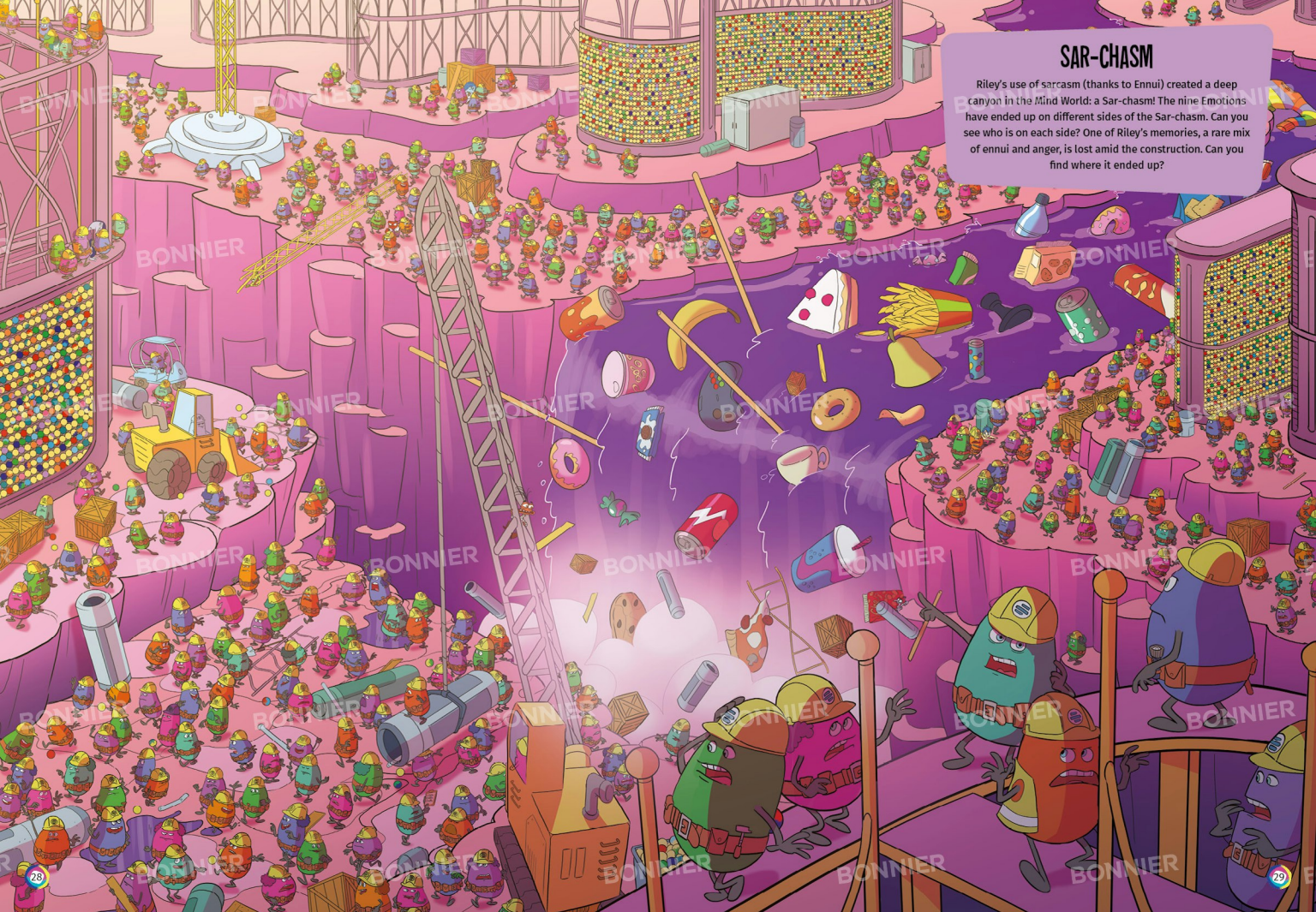
The core Emotions have brought their new colleagues to see where all of Riley's random thoughts run through her mind. Since she's a teenager, many of them are food related! Can you spot the nine Emotions among all the puberty construction? Also look for the memory that rolled out from Long Term that is both disgusting and sad — most likely about broccoli pizza!

The core Emotions have brought their new colleagues to see where all of Riley's random thoughts run through her mind. Since she's a teenager, many of them are food related! Can you spot the nine Emotions among all the puberty construction? Also look for the memory that rolled out from Long Term that is both disgusting and sad — most likely about broccoli pizza!



SAR-CHASM

Riley's use of sarcasm (thanks to Ennui) created a deep canyon in the Mind World: a Sar-chasm! The nine Emotions have ended up on different sides of the Sar-chasm. Can you see who is on each side? One of Riley's memories, a rare mix of ennui and anger, is lost amid the construction. Can you find where it ended up?



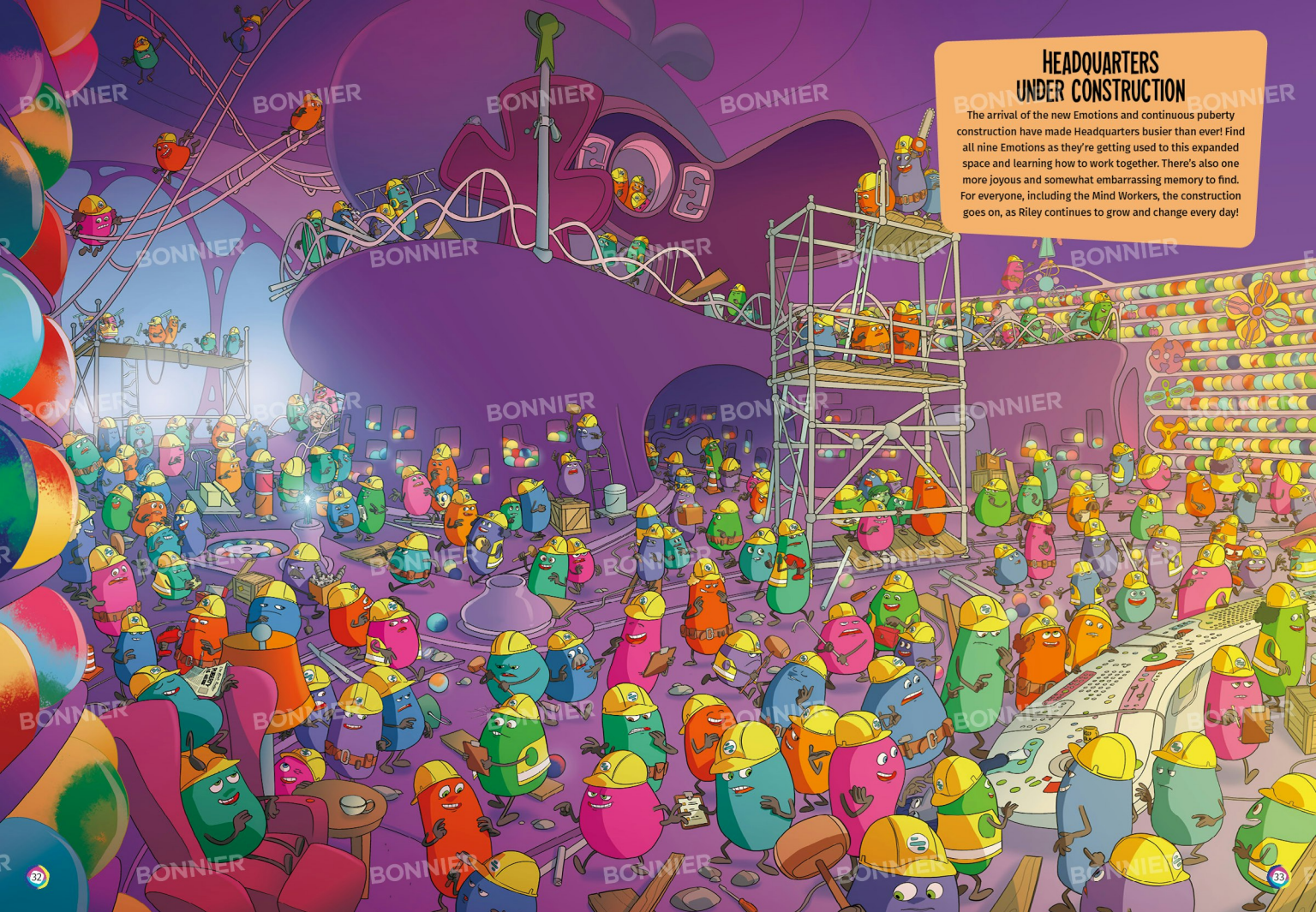


FORT PILLOWTON

Inside Imagination Land lies Fort Pillowton. Though it used to be a perfect pillow fort when Riley was young, it's had other uses, too, such as drawing up possible scenarios for Riley's future. Can you find the five core Emotions among all the artistic action? Ennui and Embarrassment are checking in from Headquarters, looking for a particular anxious and envious memory. Where is it?

HEADQUARTERS UNDER CONSTRUCTION

The arrival of the new Emotions and continuous puberty construction have made Headquarters busier than ever! Find all nine Emotions as they're getting used to this expanded space and learning how to work together. There's also one more joyous and somewhat embarrassing memory to find. For everyone, including the Mind Workers, the construction goes on, as Riley continues to grow and change every day!



MORE CHARACTERS AND OBJECTS TO FIND






HEADQUARTERS

-  Accordion
-  Mind Manual
-  Makeup Compact
-  Tissue Box
-  Newspaper with the Headline "RILEY SMASH!"
-  Fear's Coffee Cup

LONG TERM MEMORY

-  Mind Worker's Lost Hard Hat
-  Lost Safety Goggles
-  Lost Work Glove
-  Forgetter's Vacuum
-  Bing Bong's Bag

IMAGINATION LAND

-  Ketchup Bottle
-  Mustard Bottle
-  Cloud Town Dog
-  Playdough Heart
-  Imaginary Boyfriend

IMAGINATION LAND UNDER CONSTRUCTION

-  Bing Bong's Rocket Wagon
-  Subconscious Guard
-  Building Block with the Letter "A"
-  Yellow Flower Cookie Decoration
-  Polka-Dotted Pillow
-  Crayon








DREAM PRODUCTIONS

-  Two Subconscious Guards
-  Cupcake
-  Mind Worker Wearing a Dog Costume
-  Mind Worker Wearing a Hockey Uniform
-  Mind Worker Holding a Megaphone
-  Mind Worker Holding a Clapper Board
-  Bing Bong

SUBCONSCIOUS

-  Bing Bong
-  Bat
-  Pile of Candy
-  Flower-Shaped Balloon
-  Cloud Bunny
-  Subconscious Guard Wearing Sunglasses

GOOFBALL ISLAND

-  Hat with Cat Ears
-  Windup Toy Mouse
-  Firecracker Toy
-  Inflatable Flamingo
-  Monkey with Cymbals
-  Mind Worker Painting Something
-  Mind Worker Throwing Confetti

EXPANDED HEADQUARTERS

-  Joy's Headset with Microphone
-  Notepad
-  Hockey Stick
-  Green Screwdriver
-  "GO RILEY" Flag
-  Mind Worker Sweeping
-  Mind Worker Eating a Sandwich

THE EMOTIONS' BEDROOM

-  Bing Bong Figurine
-  Fire Extinguisher
-  Sadness's Glasses
-  Fear's Teddy Bear
-  Disgust's Sleeping Bonnet
-  Lost Hard Hat

THE VAULT

-  Pouchy T-shirt
-  Bloofy
-  Lost Torch
-  Stick of Dynamite
-  Lance Slashblade

STREAM OF CONSCIOUSNESS

-  Hockey Mask
-  Handheld Video Game Controller
-  Secret Diary
-  French Fries

SAR-CHASM

-  Shovel
-  Purple Hard Hat
-  Green Gloves
-  Torch
-  Pouchy

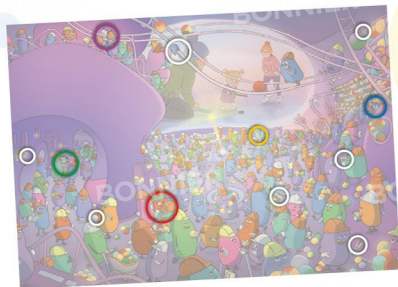
FORT PILLOWTON

-  Anxiety
-  Envy
-  Pencil
-  Eraser
-  Ruler
-  Jar of Ink
-  Blue Notebook
-  Mind Cop

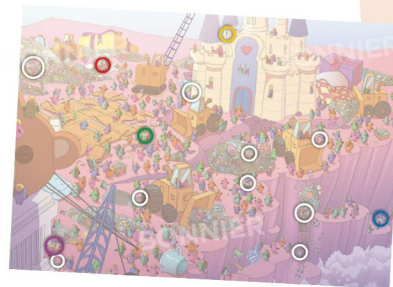
HEADQUARTERS UNDER CONSTRUCTION

-  Nostalgia
-  Ennui's Smartphone
-  Newspaper with the Headline "PUBERTY IS HERE"
-  "KEEP CALM" Coffee Mug
-  Purple Hard Hat

ANSWERS

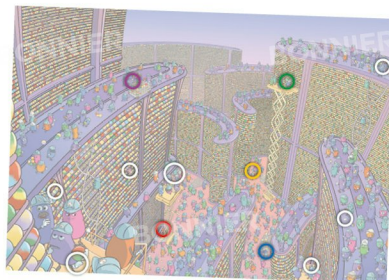


HEADQUARTERS



IMAGINATION LAND
UNDER CONSTRUCTION

LONG TERM MEMORY



DREAM PRODUCTIONS



IMAGINATION LAND



SUBCONSCIOUS



GOOFBALL ISLAND

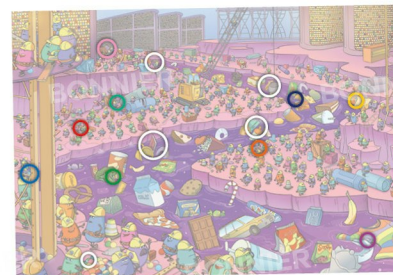


THE VAULT

**EXPANDED
HEADQUARTERS**



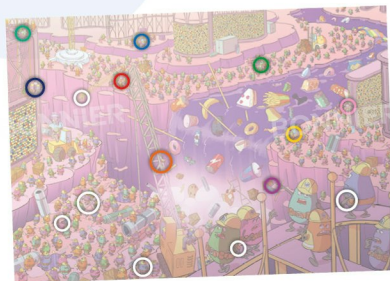
**STREAM OF
CONSCIOUSNESS**

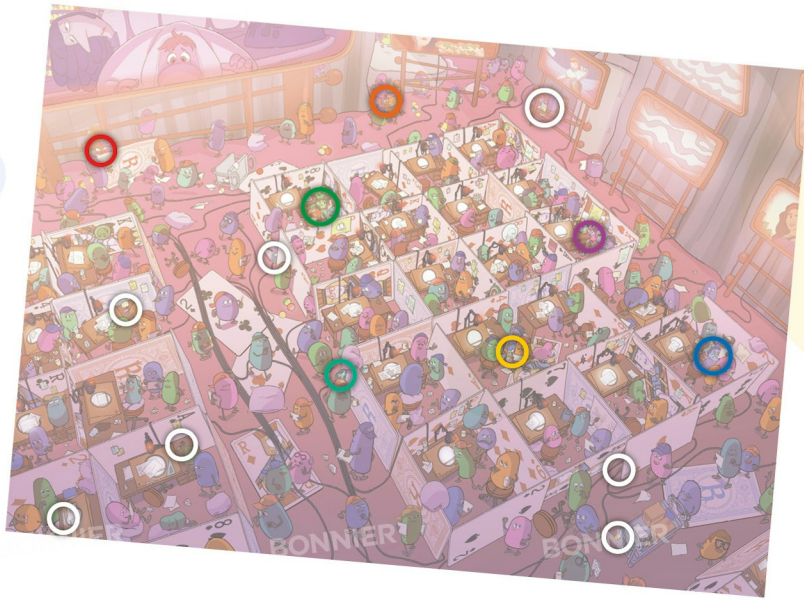


**THE EMOTIONS'
BEDROOM**



SAR-CHASM





FORT PILLOWTON

HEADQUARTERS UNDER CONSTRUCTION

