

Welcome  
to the  
Museum

ADMIT ALL



# Animalium ACTIVITY BOOK

Curated by KATIE SCOTT

**36**  
Activities  
from the  
best-selling  
creators of  
*Animalium*

**B**  
**I**  
**G**  
**P**  
**I**  
**C**  
**T**  
**U**  
**R**  
**E**  
**P**  
**R**  
**E**  
**S**

## Answers



The brain coral and green grasshopper are both invertebrates



The axolotl and Allen's worm salamander are both amphibians



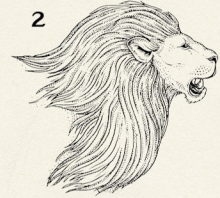
The bateleur and ruby-topaz hummingbird are both birds

## How to draw a lion

1



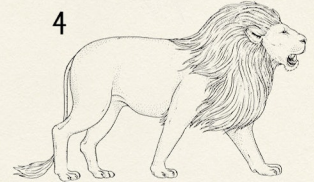
2



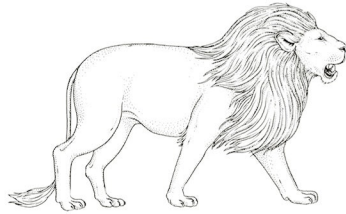
3



4



## Try it yourself



**Lion**

*Panthera leo*

Length: 2.85 metres

Second only to the tiger in size, this big cat is immediately recognizable thanks to its mane. It lives in prides where the females hunt together for food.

Add animals to  
this coastal habitat



## Some coastal habitat creatures



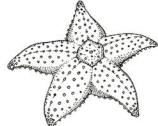
Galico scallop



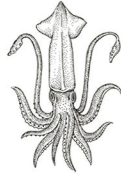
Bushy-backed sea slug



Crown jellyfish

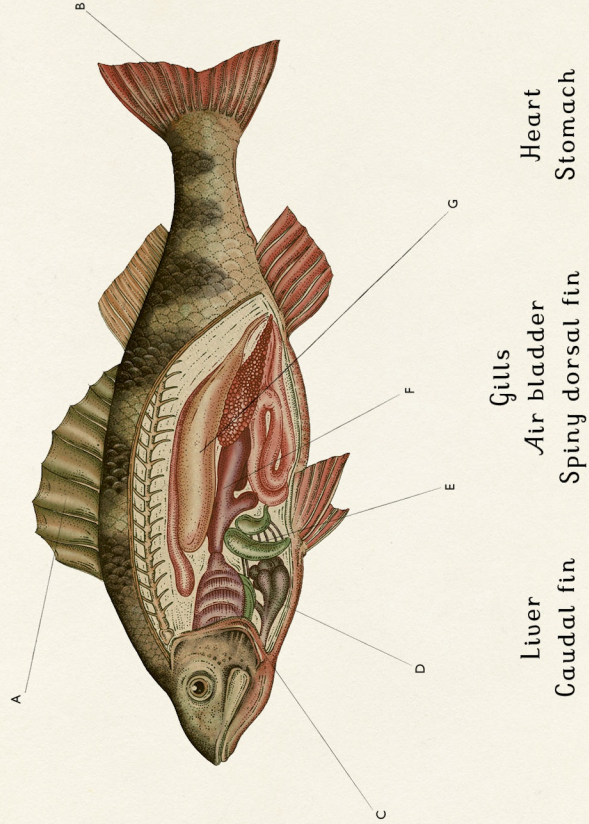


Cushion star

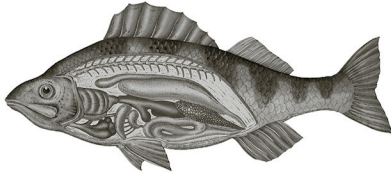


Northern short-fin squid

## Label the parts of the fish



## Answers



- A - Spiny dorsal fin
- B - Caudal fin
- C - Gills
- D - Heart
- E - Liver
- F - Stomach
- G - Air bladder

Circle the matching pair of ornate horned frogs

