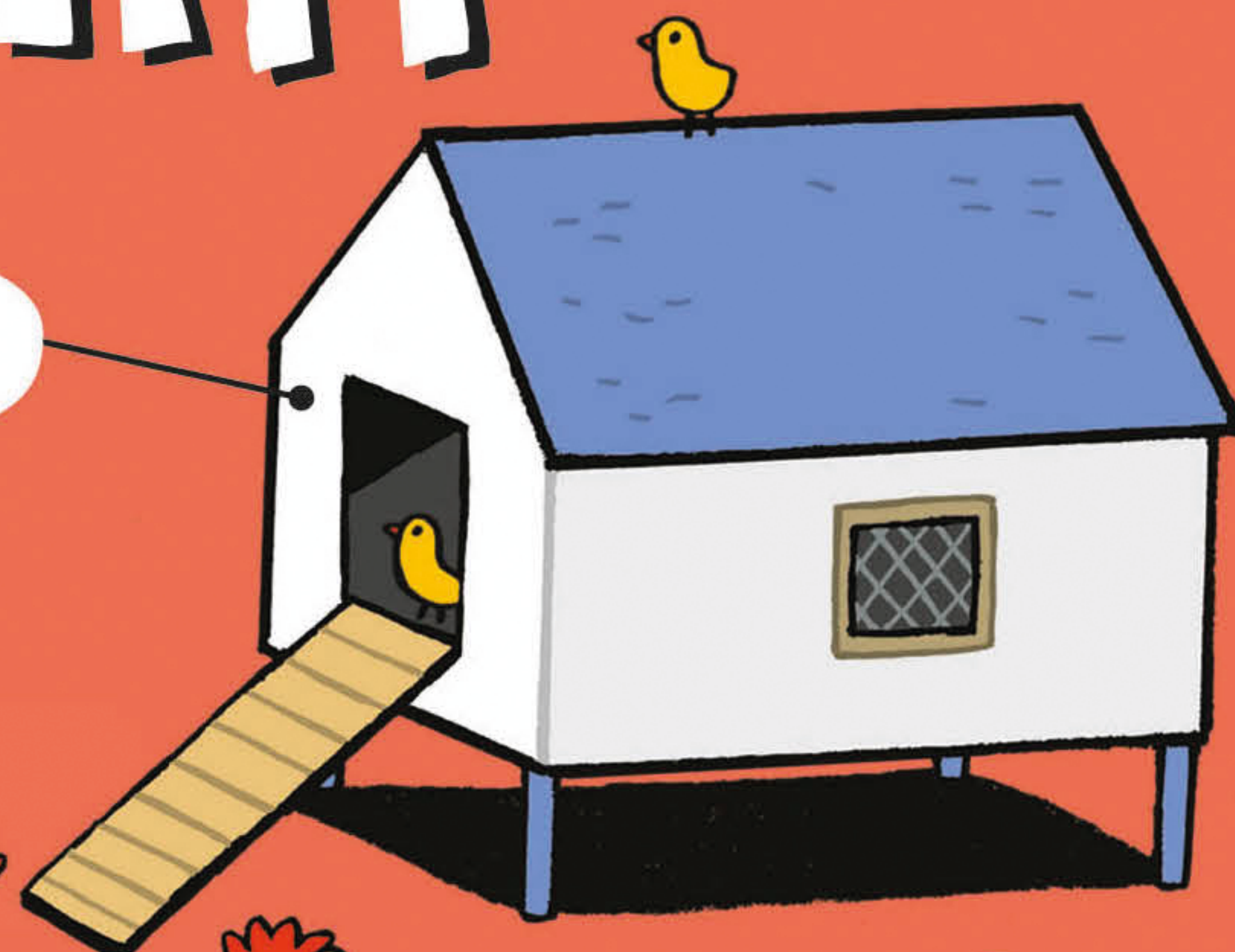


# LITTLE EXPLORERS

# THE FARM

LIFT THE FLAPS TO EXPLORE THE FARMYARD INSIDE AND OUT!

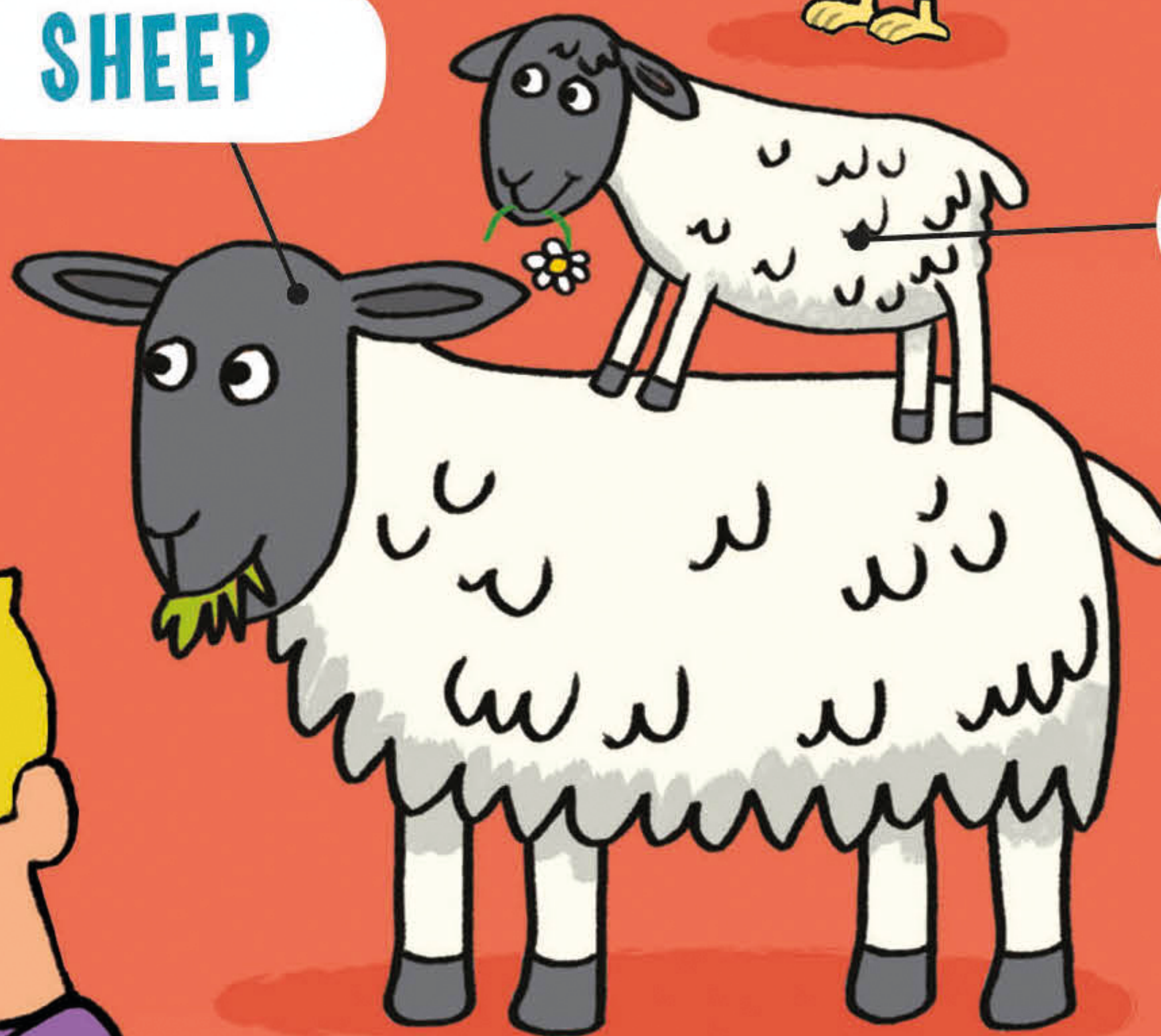
HEN HOUSE



COW



SHEEP



LAMB



MILK

DOG



RABBIT



STRAW



MORE THAN 30 FLAPS!

## WELCOME TO THE FARM!

Farms are places where animals are reared and crops, such as wheat, fruit or vegetables, are grown. Some farms only grow crops or only look after animals, but others, like this one, do both. The day is just beginning, so let's explore!

### Out in the fields

Many of the animals live out in the fields and eat grass. The farmer only brings them into the yard when the weather is very wet or snowy.



Sheep

Alpaca



Stables



### The farmhouse

This farmer and his family live in the farmhouse, next to the farmyard, so they can look after the animals more easily.



Vegetable plot



### Crop fields

Some fields are used for growing crops to eat, and hay to feed the animals.

Scarecrow



### The farm shed

The tractors and other machinery used on the farm are kept safe in the farm shed.

### Tractor power!

The farmer uses the tractor to take extra food to the animals. It has big, thick tyres to help it cross the bumpy, muddy ground.

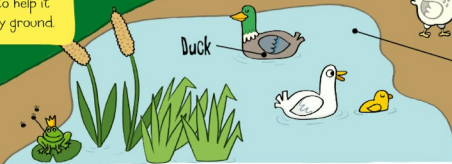


Tractor

Hen house



Pond



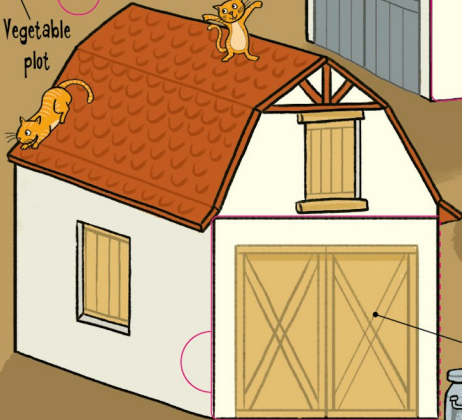
Duck

Pig



### The barn

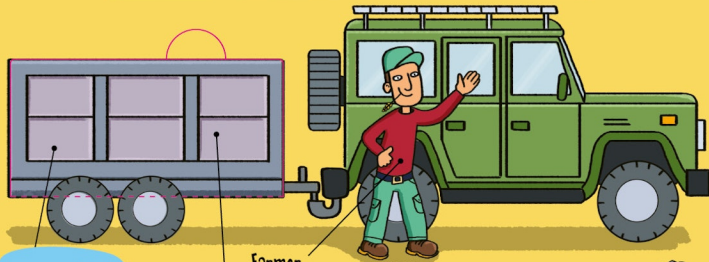
This is a very big building. It is used to store hay and straw, and to shelter animals, such as cows and sheep.



Milk pail

## IN THE FARMYARD

Many of the smaller animals live in the yard, so it can be one of the noisiest places on the farm – especially at feeding time! The farmer takes food to the hungry animals every morning. Let's join him on his rounds!



### Hungry animals

The farmer loads up the feed in his trailer and delivers it all over the farm.

farmer

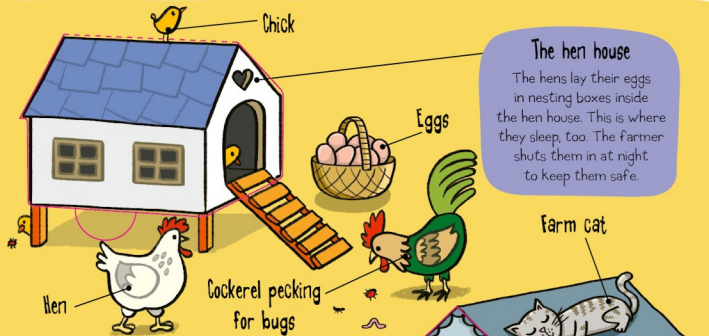
### What's for breakfast?

Each animal has its own special food.



### Noisy geese

Geese are very loud birds. They lay large eggs and have soft feathers that are used to fill pillows and duvets.



### The hen house

The hens lay their eggs in nesting boxes inside the hen house. This is where they sleep, too. The farmer shuts them in at night to keep them safe.

Chick

Eggs

Farm cat

Hen

Cockerel pecking for bugs

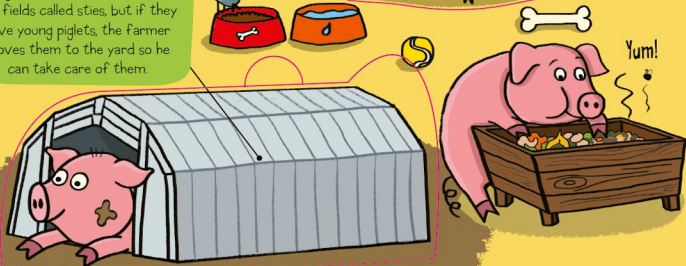
### Dog kennel

Dogs that work on the farm usually live in kennels outside. Farm cats live outside too, and sleep in the barn.

### Pig sty

Pigs usually live in shelters in the fields called sties, but if they have young piglets, the farmer moves them to the yard so he can take care of them.

farm dog



Yum!



## HARVEST TIME

In summer and autumn, the crops that were planted in the spring are ripe and ready to harvest. It's important to do this job when the weather is good and the fields are dry, or the crops will get soggy and spoil. Let's join the farmer as he cuts the wheat on a sunny day...

### Extra help

The harvest must be done quickly, before the weather changes, so the farmer employs extra staff to help him.

Corn

Trailer of grain

Wheat

### Home sweet home

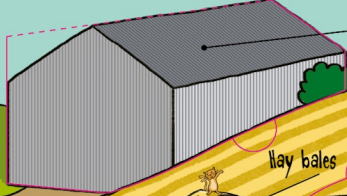
Many wild creatures, like this tiny mouse, make their home in the fields and surrounding hedgerows, and feed on the growing crops. When the field is harvested, they scurry off to find a new home.



Moo!



Hot air balloon



### Storing the Crops

The harvested crops are kept in the grain store. This keeps them fresh and dry until they are sold. The hay and straw are stored in the barn, ready to be used for animal feed and bedding.

Hay bales

### The Combine harvester

As the farmer drives this machine it cuts the wheat, shakes the grain from the stalks, and cleans it by separating it from any dirt and bits.



Cleaned grain

Hedgerow

### Is it ready?

Crops ripen at different times, but the farmer knows exactly when a crop is ready to be cut. Hay is usually harvested in early summer, followed by wheat and corn in late summer.

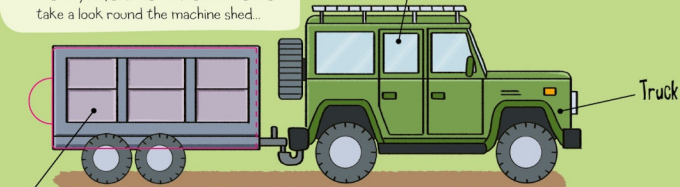


## FARM MACHINERY

The farmer uses lots of different vehicles and machinery to help him do his work. Some, like his tractor and truck, are used every day, but others are used at special times of year, such as harvest time. Let's take a look round the machine shed...

### Truck and trailer

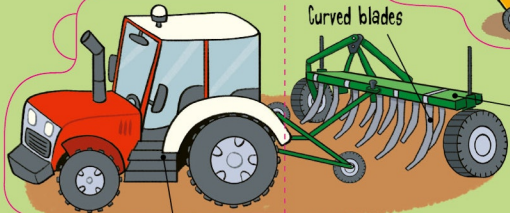
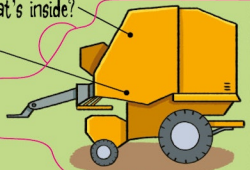
Together these are the most useful vehicles on the farm. The farmer uses them to get about, and to transport animals and equipment around the farm.



### Straw baler

This clever machine collects up the hay or wheat stalks after they have been cut, and turns them into neat packages called bales, ready to store in the barn.

What's inside?



### Tractor

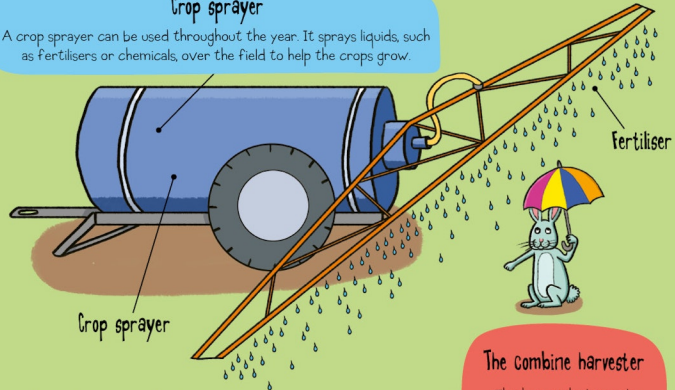
The tractor is a big powerful vehicle, used to pull heavy equipment and machines, such as the plough. In the past, horses were used to pull farm machinery.

### Plough

Ploughs come in many sizes, but they all do the same job. The curved blades turn over the soil, to prepare it for planting seeds in the spring.

### Crop sprayer

A crop sprayer can be used throughout the year. It sprays liquids, such as fertilisers or chemicals, over the field to help the crops grow.



### The Combine harvester

This huge vehicle is only used at harvest time, when the crops need cutting. In the past, farm workers had to cut the crops with curved blades called scythes.

