

wellcome
collection

Welcome
to the
Museum

ADMIT ALL

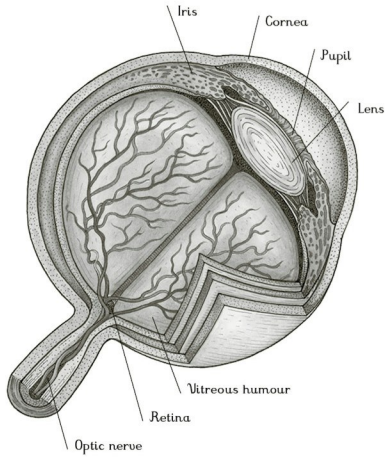
Anatomicum ACTIVITY BOOK

Curated by KATY WIEDEMANN
and JENNIFER Z PAXTON

Colouring,
drawing,
puzzles
& facts!

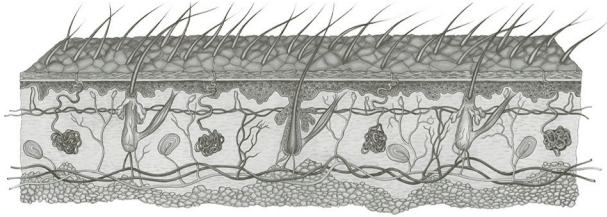
B
I
G
P
I
C
T
U
R
E
P
R
E
S
S

Answers



Complete this cross-section of skin and colour it in

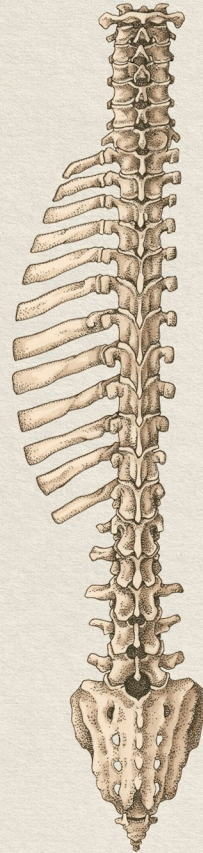


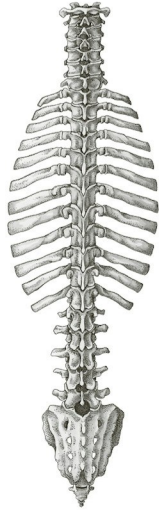


Skin

Forming our whole outer body covering, the skin is part of the integumentary system, a collection of structures including skin, hair and nails, that forms a flexible barrier between us and the outside world. The skin is the largest organ both by weight and surface area.

Draw in the missing ribs



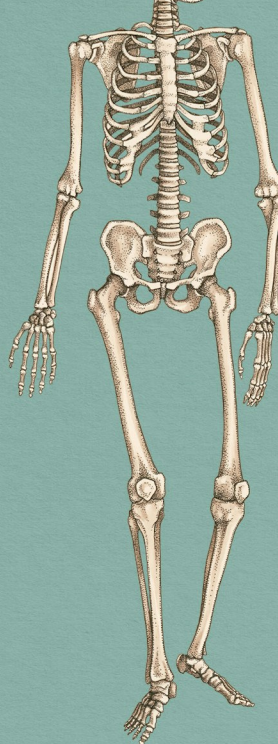


Vertebral column.

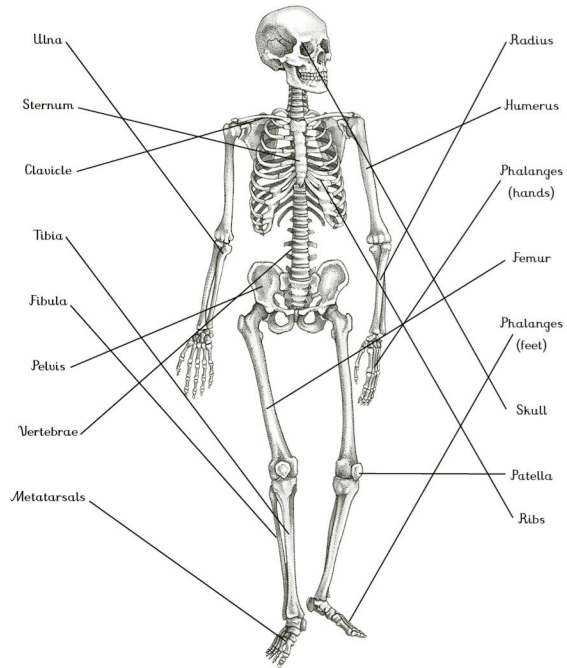
The vertebral column, or spine, is made up of 33 individual vertebrae. Ribs join up with 12 of them to form the rib cage.

Do you know where these bones are?

(draw lines to show where they can be found on the skeleton)

| | | |
|-------------|--|-------------------|
| Ulna |  | Radius |
| Sternum | | Humerus |
| Clavicle | | Phalanges (hands) |
| Tibia | | Femur |
| Fibula | | Phalanges (feet) |
| Pelvis | | Skull |
| Vertebrae | | Patella |
| Metatarsals | | Ribs |

Answers



Find the missing square

