

FROM THE FILMS OF

# Harry Potter™

## CRAFTING WIZARDRY

WITH 32 PAGES OF PRESS-OUTS AND TEMPLATES!

THE  
OFFICIAL  
HARRY POTTER  
CRAFT BOOK



# HEDWIG AND HOGWARTS ACCEPTANCE LETTERS HANGING MOBILE

Designed by MATTHEW REINHART

SKILL LEVEL ★★★

In the wizarding world, letters, parcels and newspapers are delivered by owl post, and among the most important of the owls' responsibilities is to bring young witches and wizards their acceptance letter to Hogwarts School of Witchcraft and Wizardry. When Harry Potter receives the post one summer day, he finds a letter addressed to him from Hogwarts, but his uncle refuses to let him have it. More and more letters are brought each day by more and more owls leading up to a bombardment of acceptance letters that burst into the house.

For the film, several owls were trained to carry and drop an envelope that was handwritten by the graphics department and affixed with a wax seal for close-ups. Then, ten thousand single sheets of paper were printed with the Hogwarts seal and Harry's address in order to be light enough to fly through the air. Special effects supervisor John Richardson and his team installed devices in the chimney and behind the letterbox that could fling the papers out at a very rapid but controlled speed to ensure a blizzard of letters. Once Harry receives his letter, from Rubeus Hagrid, he is taken to Diagon Alley for his school supplies. As the letter allows for students to bring "an owl OR a cat OR a toad", Hagrid purchases a snowy owl for Harry (for his eleventh birthday), which Harry names Hedwig. Hedwig proves a loyal and loving companion for the young wizard. With this papercraft, you'll create your own Hedwig and surround her with a flurry of letters. With a tug on her string, Hedwig flaps her wings!

## WHAT YOU NEED

- Hedwig templates (pages 161–67)
- Scoring tool, such as a knitting needle or paper clip
- Ruler
- Cutting tools, such as scissors and utility knife
- Card
- Glue
- String or yarn, thread, fishing line, ribbon, etc.
- Coins, for weight
- Pencil
- Dowel, branch or stick to hang the mobile from

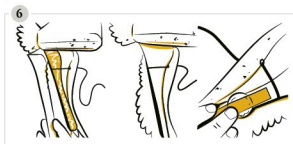
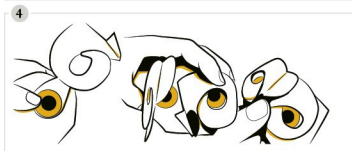
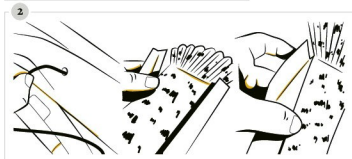
## OPTIONAL

- Felt-tip pens or coloured pencils
- Paper creaser
- Decorative tape

1. Press out the provided templates on pages 161–67.
2. Fold the template pieces on all creased lines. Press firmly to make crisp folds.
3. This mobile will need weight for stability. Use pieces A, B and C as templates on card to cut out 2 long pieces and 1 small rectangular piece. These will help balance the mobile.
4. Decorate template cut-outs D, E, F and G as desired. Feel free to get creative here. Give Hedwig some of her markings across these pieces. On H and I, draw Hedwig's eyes. Do not draw her eyes directly on G.

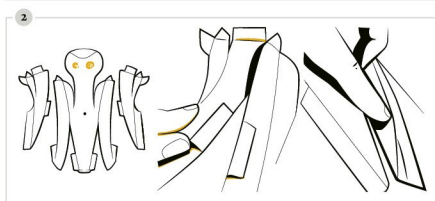
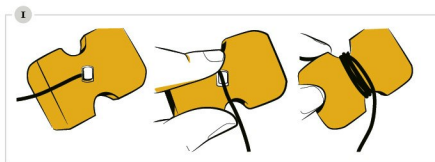
## ASSEMBLING THE WINGS

1. Glue the wing tabs on piece E to the corresponding grey areas on the same piece. Allow to dry for a few minutes. Cut a long piece of string (at least 60 cm – longer is better because you can always trim excess string later), and insert through both wing holes from the top side down.
2. Loop back the string, and pull it back up through the opposite hole into which it was initially inserted. Both ends of the string should be on the top side of the wing. Don't pull the string too taut.
3. Glue one of the card wing weights to the underside of the wing underneath the string loops, making sure not to get glue on the strings. Pull the strings to tighten them flat against the card.
4. Tightly knot the string on the top side of the wing. Leave the ends long for later assembly. Repeat steps 1 to 4 for the second wing, piece F. Set aside.



1. Unravel the string on your centre weight (cut from piece C), and glue the weight to the corresponding shaded area on piece D. Next, finish gluing the head closed by adhering the top of piece D to the last shaded area on the inside of the head.
2. Make sure to insert the end of the string on the centre weight through the hole in the underside of Hedwig before gluing the entire top piece in place.
3. Finish gluing the top body piece (D) into place by following the grey-shaded areas as guides.
4. Glue pieces H and I (the eye tabs) to the front of the head section of piece G. Flip the face pieces (H and I) to join in the middle, and glue the appropriate tabs, using grey-shaded areas as guides.
5. Glue the wings (E and F) to the top of the back (D), lining up the square ends of the tabs with the base of the tail piece (D). Add more felt-tip detail if needed.
6. If desired, glue the wing weight templates (A and B) over the card to make them look less obvious. Glue or tape coin(s) to the wing weights, just to the outer side of the string.

## ASSEMBLING THE BODY

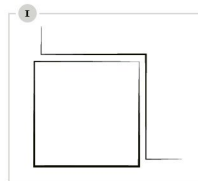


1. Cut a length of string at least 60 cm long. Daub glue on the centre of the cardboard weight (cut from piece C), and adhere one end of the string to the glue dot. Wrap the string around the weight and set aside for later assembly.
2. Use the shaded areas as a guide to glue the tabs on pieces J and K to the sides of G. Let dry for a few minutes. Piece K should be glued to the left side of G, and piece J on the right.
3. Glue the tabs connecting the sides of the body to the side of the head on piece G, using the shaded areas as your guide. The glue points are numbered so that you can glue tabs to the corresponding numbered area.

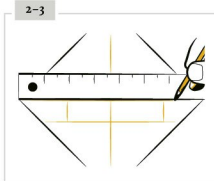
**NOTE:** The tabs on the sides and top of the head can be a little tricky to glue in place, because they all end up fully enclosed inside the head. Our advice is to glue the main tab at the top of the head last, to allow the most space for assembly.

**NOTE:** A single large coin on each wing works well, but 2 to 3 smaller coins could also be used if that's what is available.

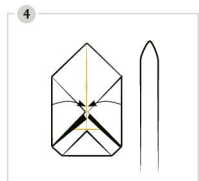
## FOLDING ENVELOPES



1. Cut as many pieces of paper as envelopes desired into four 12 cm squares. Place the pieces of paper on a flat surface angled like a diamond.

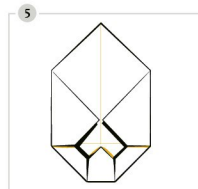


2. Using a ruler, draw a line from the left corner to the opposite right corner. Do the same for the remaining 2 corners. Mark the centre as your guide.
3. At 2 cm below your horizontal centre line, draw a parallel line across. Score this line, and fold the bottom corner to that line.

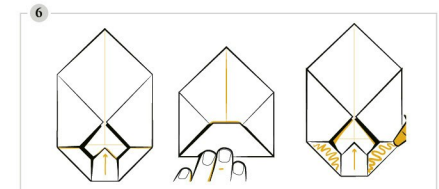


4. Fold the left side, and then repeat with the right side.

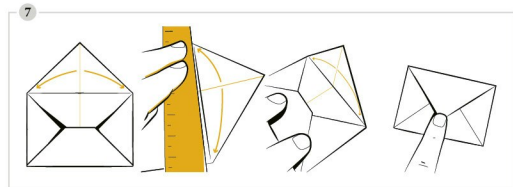
**TIP:** Use a paper creaser to help make your folds sharper.



5. Fold the bottom left corner up to form a trapezium shape. Repeat with the bottom right corner.

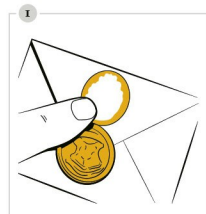


6. Fold the bottom up on the centre line. Your paper should now look like an envelope with an open top. Glue the 2 trapezium sides to secure.



7. Using a ruler, draw a line from 1 folded corner to the other. Score along that line, and fold along that line to complete the envelope shape.

## DECORATING THE HOGWARTS LETTERS



1. Use the provided stickers for the Hogwarts wax seal, and adhere in place on the envelopes.

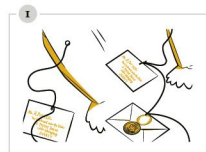


2. Decorate the front of the envelopes with Harry Potter's Privet Drive address:  
*Mr H Potter  
The Cupboard under the Stairs  
4 Privet Drive  
Little Whinging  
Surrey*

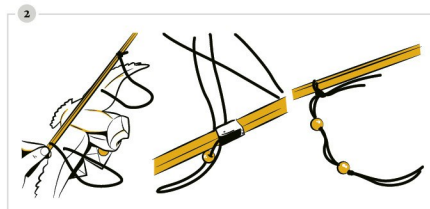


3. Poke a hole through the top centre of the envelope to insert the string.

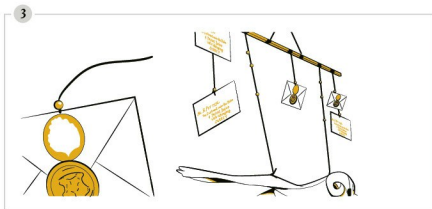
## ASSEMBLING THE MOBILE



1. Tie 2 to 3 letters from the string on the underside of Hedwig.

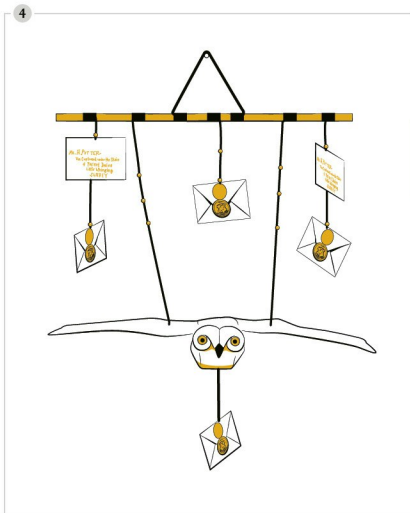


2. Attach the strings tied to the wings onto your stick. If the string doesn't tie tightly (like fishing line or anything slippery), use a daub of glue or decorative tape to hold it in place. Feel free to add beads or embellishments if desired.



3. Secure the knots on the letters with a small dab of glue. Hang as many letters as you wish from the dowel. Tie a piece of string into a loop in the centre of the stick to hang the mobile from.

**NOTE:** You have the freedom to use as many or as few letters as you like, but there needs to be at least one on the underside of Hedwig to pull. Also note that adding many letters can add extra weight, so make sure the mobile is securely tied and hung.



4. Be sure to centre Hedwig on the mobile, and tie the wings evenly so she doesn't tilt to one side. Otherwise she'll wobble round unevenly when you pull on the bottom string.

**NOTE:** Tugging lightly on the bottom string will make Hedwig flap her wings!

"DAD, LOOK! HARRY'S GOT A LETTER!"

Dudley Dursley, *Harry Potter and the Philosopher's Stone*



## BEHIND THE MAGIC

Though Hedwig is a female in the story, she was played by several male snowy owls in the films. Males have fewer dark markings than females and are smaller, which made them easier for Daniel Radcliffe (Harry Potter) to carry.



ABOVE: Daniel Radcliffe (Harry Potter) wore a leather cuff under his robe for this scene in *Harry Potter and the Philosopher's Stone* where Hedwig perches on his arm.