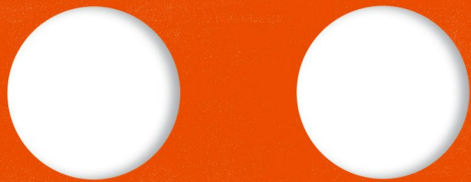


Maggie Li

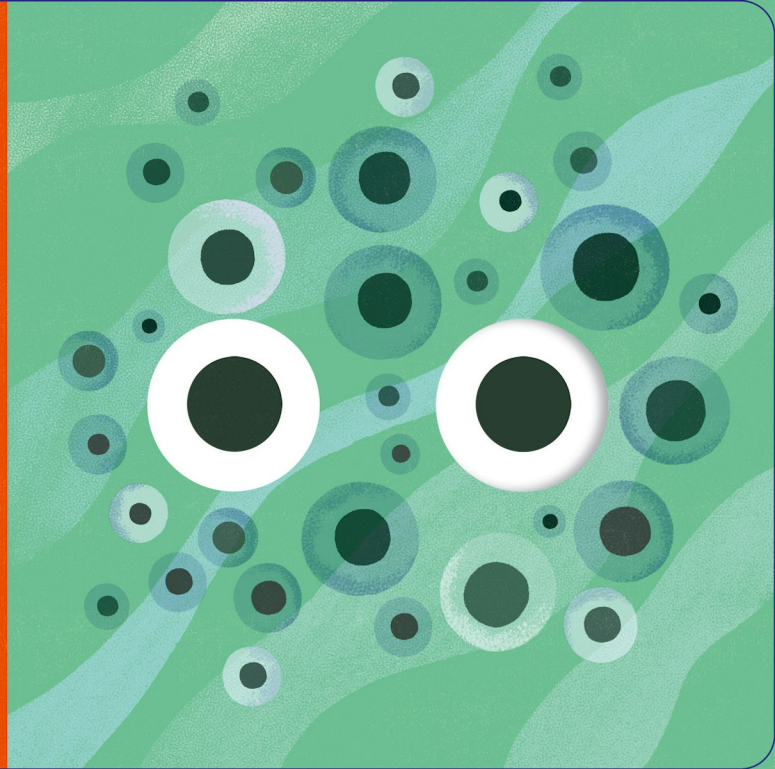
# FROOG




Can you see the jelly dots floating in the water?




Inside one of those dots is **Frog**.



A vibrant green pond scene. In the center, there is a large white egg with a black dot. Surrounding it are several smaller white eggs, some with black dots and some without. The pond is filled with various fish: a purple spotted fish, a green fish, a brown fish, a red and white striped fish, and a small blue fish. The background consists of vertical green lines representing reeds or grass.

Each dot is a tiny egg.  
Together they are called **frogspawn**.

A blue pond scene. In the center, there is a large white egg with a black dot. Surrounding it are several smaller white eggs, some with black dots and some without. The pond is filled with various fish: a purple fish, a green fish, a brown fish, a red fish, and a small blue fish. In the background, there is a silhouette of a frog sitting on a lily pad. The bottom of the pond is orange and yellow, representing sand or rocks. There are also some green and purple plants.

Which tiny egg will  
grow into Frog?

The eggs have a long  
journey ahead.



Some eggs are washed away from  
the safety of the pond reeds . . .



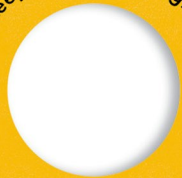
. . . and the **wind** blows others  
far away from the water.



Exciting things are happening.



Frog keeps growing and growing.



With four legs,  
Frog is called a **froglet**.

Now Frog's legs grow longer and stronger,  
and the tail starts to shrink.

Soon, it will be time  
to leave the pond.

