



LITTLE EXPLORERS **LET'S GO** →

# FIRE STATION

HELICOPTER



**MORE THAN  
30 FLAPS!**

TRAINING  
TOWER



FIRE CHIEF



**LIFT THE FLAPS  
TO EXPLORE  
A FIRE STATION  
INSIDE AND OUT!**

FIRE ENGINE



FIREFIGHTER



## WELCOME TO THE FIRE STATION

This building is a fire station. It's a very important place where firefighters keep their equipment and fire engines, and it's also where they eat and sleep! Let's take a closer look.

### Training tower

This tall tower is where firefighters learn how to tackle emergencies. They test their equipment on a mix of doors and windows and practise putting out fires on the different levels.

### Helipad

This giant 'H' on top of the fire station roof is a helipad. It's a big, flat space where helicopters land.

### Shhh!

What is going on behind these windows? Lift the flap as quietly as you can.

WHIRR WHIRR  
WHIRR WHIRR

### Ring the bell

This bell sounds whenever there is an emergency. It is very loud so that everyone in the building hears it and knows it is time to get ready.

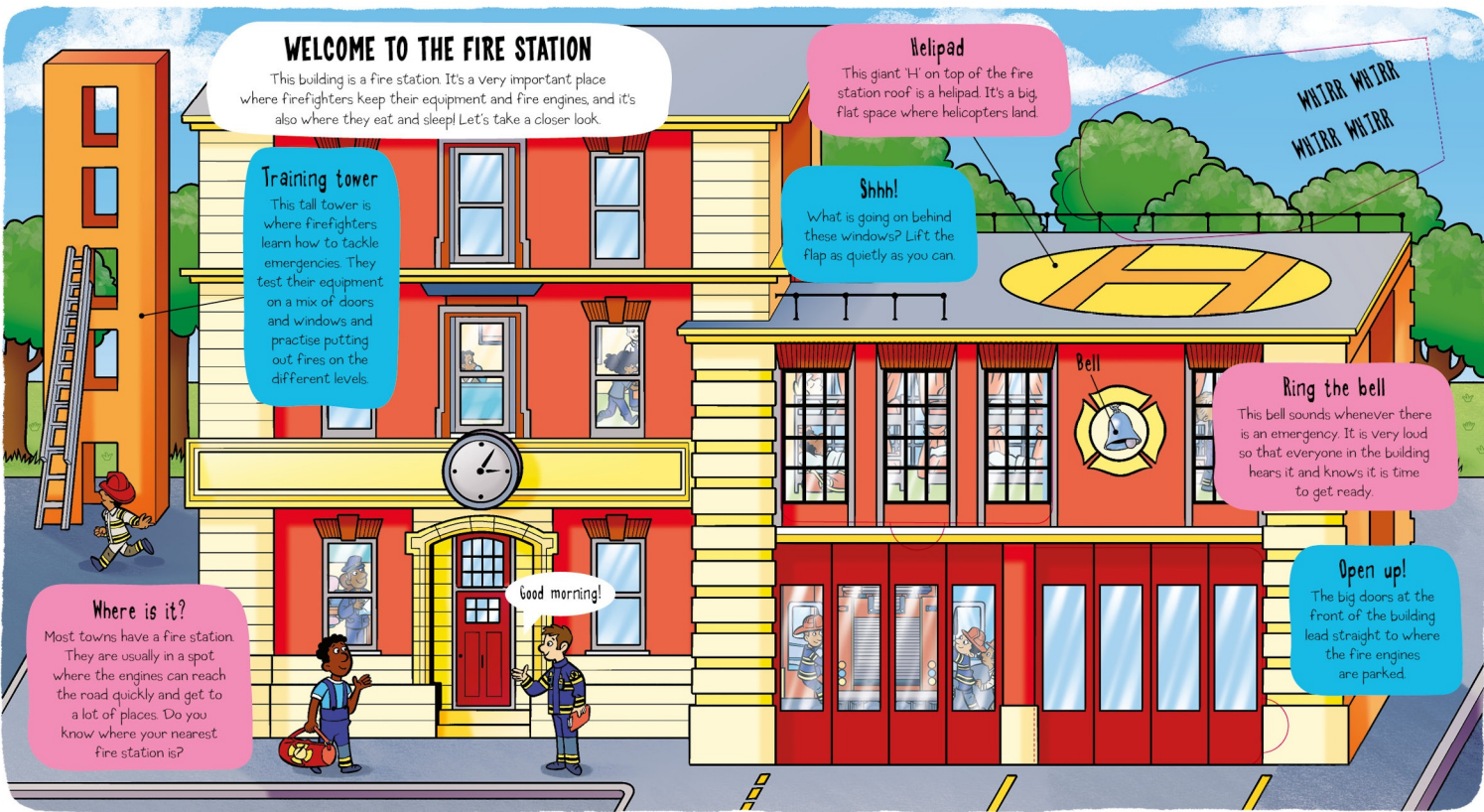
### Open up!

The big doors at the front of the building lead straight to where the fire engines are parked.

### Where is it?

Most towns have a fire station. They are usually in a spot where the engines can reach the road quickly and get to a lot of places. Do you know where your nearest fire station is?

Good morning!



## THE ENGINE ROOM

The biggest thing at the fire station is the fire engine. It lives in the engine room at the front of the building, ready for a quick getaway. The fire engine holds lots of important equipment to help in an emergency.

## Sirens and lights

When a fire engine sounds its siren and flashes its lights, it needs to get somewhere fast! Cars, lorries and bikes on the road will move out of the way to let the engine pass.

## Boiling hot!

Emergencies can take a long time to sort out and people can get upset or frightened. The water boiler is on hand to make hot drinks to comfort people and warm them up, too.

## Ladders

Ladders help firefighters reach high-up blazes and rescue people and animals who are stuck in spots that are hard to reach. There's a big ladder on top of the engine and a smaller removable ladder tucked inside the storage area.



## The cab

When they're on the move, firefighters sit in the engine's cab. The driver can control the sirens and lights with the push of a button.

## Engine storage

The sides of the engine are packed with special equipment. When firefighters reach an emergency, they lift the shutters quickly to get what they need.

## Safety checks

Firefighters must check the engine and all the equipment at the start and end of each day to make sure they aren't damaged.

## Look out!

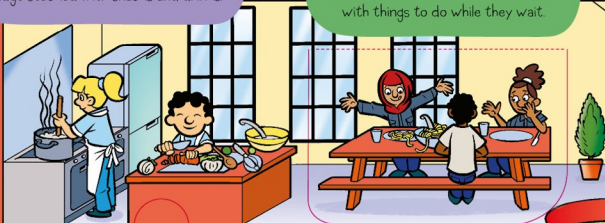
Fire engines are painted in bright colours to make them visible on the road. Their yellow and red stripes are hard for other vehicles to miss.

## LIVING QUARTERS

Firefighters work in shifts to make sure someone is always on duty. Some people work during the daytime while others take the night shift, but there's always a crew ready to respond. Firefighters spend lots of time at the station, so it needs to feel just like home!

### What's cooking?

Eating healthy meals helps firefighters keep their energy up. The kitchen has an oven and stove for cooking, and a fridge stocked with snacks and drinks.



### Common room

Firefighters work very hard, so it's important that they have a place to relax. It might be a while before the next call, so the common room is filled with things to do while they wait.



### Get some rest

Rest is important for firefighters as it keeps their bodies and minds fresh and ready for anything! Special beds called bunk beds are stacked on top of each other so lots of people can sleep at once.



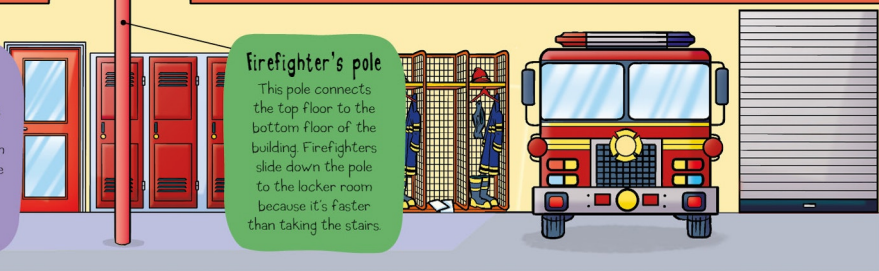
### Chief's office

It's not just about putting out fires! A big part of a firefighter's job is to teach people about fire safety and how to stop fires from starting in the first place. The fire chief meets with headteachers to plan school trips and give important safety advice.



### firefighter's pole

This pole connects the top floor to the bottom floor of the building. Firefighters slide down the pole to the locker room because it's faster than taking the stairs.



## LOCKER ROOM

When the bell sounds, it's time to get ready and gear up! Firefighters head straight to the locker room where their safety equipment is stored. Let's see what they wear.

What do I need?

What's behind this door?

### Lockers

Each firefighter has a locker to store their belongings. They spend lots of time at the fire station, so it's important to have things they might need from home.

### Looking sharp

When they're not helping at emergencies, firefighters dress in their smart uniforms. You can tell a firefighter's rank by the marks on their shirt collar or helmet.

### Safety first!

Firefighters need to stay safe when doing dangerous jobs. That's why they wear lots of protective clothing. Let's see what each piece does.

### Breathing apparatus

Fire creates smoke that is harmful to breathe in. Firefighters wear face shields and oxygen tanks so they can breathe clean air in smoky places.

Face shield

Oxygen tank

### Time is ticking

Firefighters train to get dressed in two minutes or less so they can reach emergencies as fast as possible! Why don't you try it?

