

Quick Start

DRAW, PAINT, STICK

DINOSAURS



*The
perfect
start to
Art!*

CAROLYN SCRACE

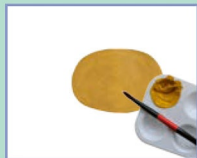
Painted Shapes

Parasaurolophus

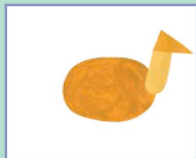
Build up the shape of a Parasaurolophus by painting a series of simple shapes. Then draw in the finishing details using a felt-tip pen.

You will need:

- Poster paints
- Paintbrush
- Cartridge paper
- Black felt-tip pen



1 Paint an oval shape for the Parasaurolophus's body.



2 Paint a triangle for its head, then add a sausage shape for its neck.



3 Paint in two long rectangles for the back legs.



4 Paint in two thin shapes for the Parasaurolophus's front legs.



5 Paint in a large triangle for its tail, and a long curved shape for its head crest. Add toenails.



6 Use a black felt-tip pen to draw its eye, nostril and mouth. Add black stripes to its neck and body.

Paint in a steep hill and some trees. Add mountains in the background and a pale yellow sky with a large orange sun.

Paint grey stripes on the Parasaurolophus's crest. Add some pine needles for it to munch for lunch!

Use the black felt-tip pen to draw in its knees and to outline its toenails.

Paint in a waterhole to drink at, and some horsetails growing nearby.

Handprint Triceratops

Have fun making your own painted handprint and then turn it into a scary Triceratops!

You will need:

- poster paints
- Large paintbrush
- Small paintbrush
- coloured paper
- Felt-tip pen
- Scissors
- PVA glue



1 Paint your hand with poster paint and press it firmly onto the paper. Leave your print to dry.



2 Use a black felt-tip pen to draw in the Triceratops' neck frill and mouth.



3 Now draw in its three large horns. Add an eye and a nostril.



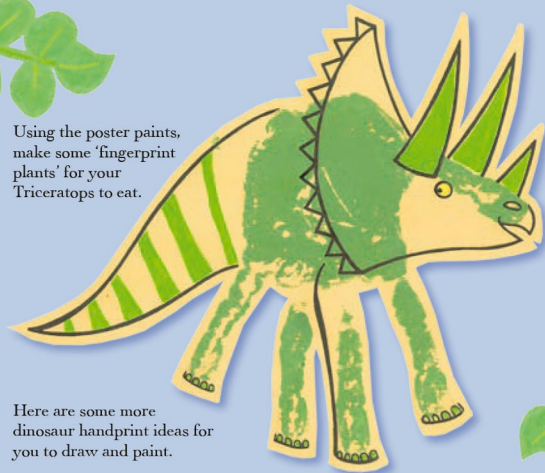
4 Draw in Triceratops' big tail and its toenails.



5 Use the poster paints to paint in the Triceratops' eye and horns. Add stripes to its tail.

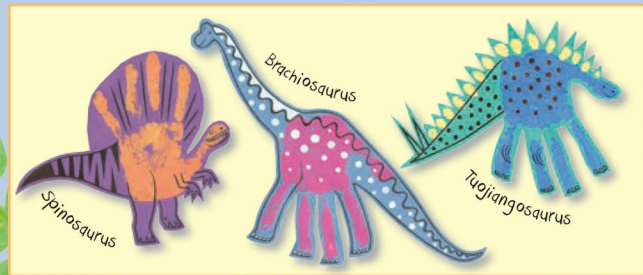


6 Cut around the Triceratops. Glue it onto a sheet of coloured paper.



Using the poster paints, make some 'fingerprint plants' for your Triceratops to eat.

Here are some more dinosaur handprint ideas for you to draw and paint.



Paper Cup Dinosaurs

Invent an awesome dinosaur and use it to create a paper cup monster.

You will need:

- Paper cups
- Poster paints
- Paintbrushes
- PVA glue
- Scissors
- Pencil
- Thick paper



1 Draw in the shape of your dinosaur's head with its mouth wide open.



2 Draw a curved shape for the dinosaur's chest. Add two small arms.



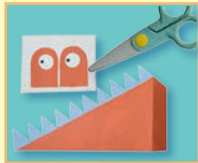
3 Now draw in its pointed teeth and big long tongue.



4 Add the nostrils. Draw a curved line for its back with added zigzags (as shown).



5 Paint your dinosaur brown and blue. Make its tongue and nostrils red, its teeth white and the background dark green.



6 Use paper to draw and paint a tail and two eyes (as shown). When dry, cut the shapes out.



7 Glue the jagged tail onto the side of the paper cup and the eyes onto the top (as shown).

Finish off by painting a pattern of blue triangles down your dinosaur's back and tail. Add some blue dots to its chest.



Here are some other bright ideas for paper cup dinosaurs!



Growlosaurus has a paper frill (above).



Painted Pebble Dinosaur Eggs

When collecting pebbles, look for flat, smooth ones, as these will be the easiest to paint.

You will need:

- Pencil
- Poster paints
- Paintbrushes
- Large pebbles
- Fine black felt-tip pen
- Coloured paper
- Card
- PVA glue



1 Cover the pebble with white poster paint and leave to dry.



2 Use a pencil to draw a zigzag hole in the dinosaur's eggshell.



3 Draw a rectangle for the baby dinosaur's head shape.



4 Draw in its neck and a round shape for its body.



5 Pencil in the dinosaur's eyes, nostrils and mouth. Draw in two short arms, and hands with two fingers.



6 Paint the eggshell with cream-coloured poster paint. Paint the inside of the shell black.



Paint the baby dinosaur with pink poster paint. Make its eye sockets and arms red and its hands pale pink. Add white to its teeth and eye.

Use a fine black felt-tip pen to outline the dinosaur, its eye, nostrils, mouth and teeth.

Tear thin strips of coloured paper to arrange into the shape of a dinosaur's nest. Glue these onto a large sheet of card and place your dinosaur eggs on top.

Use a black felt-tip pen to draw cracks on the eggshell. Paint some pale yellow spots on the baby dinosaur.

