

ASTROSAURS

MISSION TO INFINITY

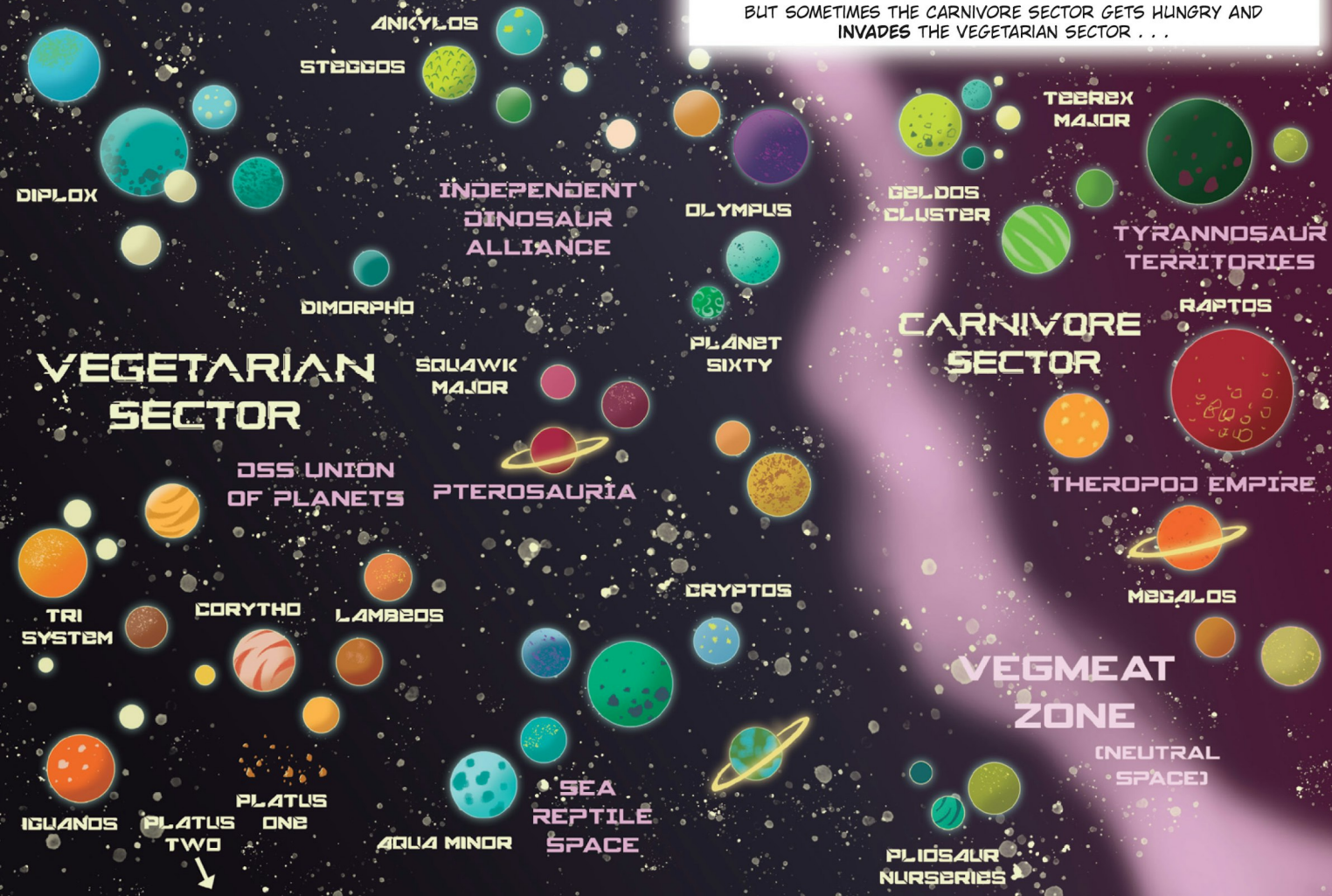


STEVE COLE TOBEY COLE ALEX LOPEZ

JURASSIC QUADRANT

THE DINOSAURS DIDN'T NEED TO SHARE ONE WORLD ANYMORE.
THE PLANT-EATERS SPREAD OUT ON ONE SIDE OF THE JURASSIC
QUADRANT AND THE CARNIVORES TOOK THE OTHER.

BUT SOMETIMES THE CARNIVORE SECTOR GETS HUNGRY AND
INVADES THE VEGETARIAN SECTOR . . .



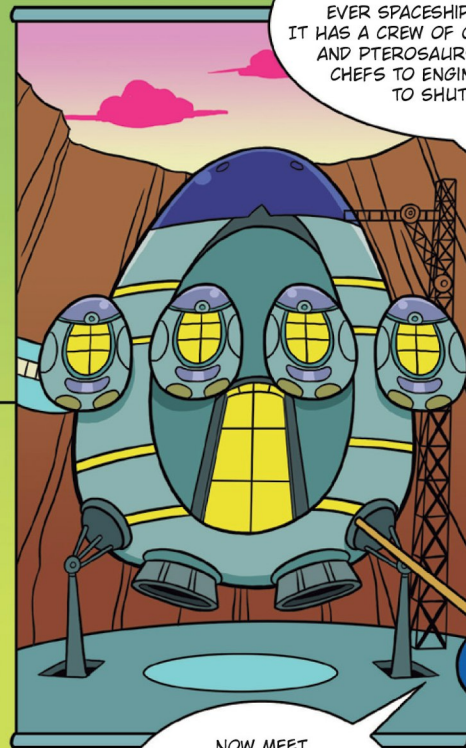
AND SO, THE DINOSAUR SPACE SERVICE
WAS SET UP TO STOP THEM!

THESE HEROIC HERBIVORES FLY
THROUGH SPACE HELPING
PLANT-EATERS IN PERIL - WHEREVER
THE PLANET, WHATEVER THE RISK.

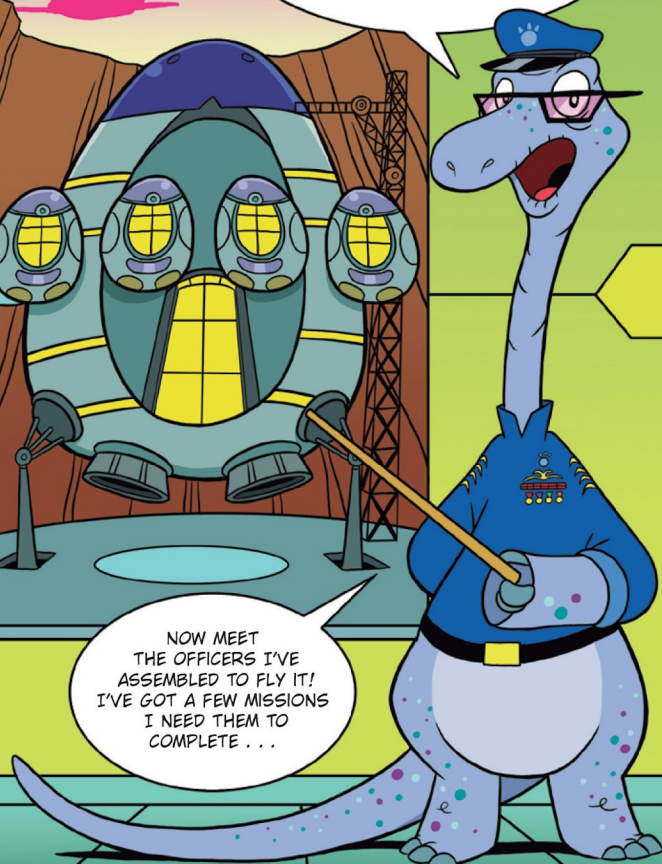


THEY'RE NOT
JUST DINOSAURS.
THEY'RE
ASTROSAURS!

GOOD DAY! I'M ADMIRAL
ROSSO, HEAD OF THE DSS.
WE'VE JUST BUILT OUR FINEST
EVER SPACESHIP - THE SAUROPOD.
IT HAS A CREW OF OVER FIFTY DINOSAURS
AND PTEROSAURS - EVERYONE FROM
CHEFS TO ENGINEERS, SCIENTISTS
TO SHUTTLE PILOTS!



NOW MEET
THE OFFICERS I'VE
ASSEMBLED TO FLY IT!
I'VE GOT A FEW MISSIONS
I NEED THEM TO
COMPLETE . . .





CAPTAIN TEGGS STEGOSAUR

BREED: Stegosaurus
PLANET OF HATCHING: Steggos

DESCRIPTION: Leads the crew of the DSS Sauropod on missions through space! Youngest (and hungriest) astrosaur ever to make 'Captain'. The DSS's best and brightest - a new captain for a new ship in a new age of astrosaur!

BEST DEFENCE: Powerful spiky tail.

FUN FACT: Teggs loves action, food, action, adventure and more action!

FIRST OFFICER ARX ORANG

BREED: Triceratops
PLANET OF HATCHING: Tri Major

DESCRIPTION: Teggs's deputy. Helps run the ship, gives advice on tactics and is also Chief Scientist. Incredibly brainy. Always stays cool under pressure. Handy in any space struggle.

BEST DEFENCE: Three mighty horns on his head.

FUN FACT: Arx invented the spaceship steering system used by the Dimorphodon!



COMMUNICATIONS OFFICER GINNI SAURINE

BREED: Hadrosaurus
PLANET OF HATCHING: Corytho

DESCRIPTION: Ginni is an expert at communicating and knows over 100 space languages.

BEST DEFENCE: Expert in eleven martial arts, including dino-judo and hoof-jab-a-go-go.

FUN FACT: Ginni's head crest changes colour with her mood — blue if alarmed, green if feeling sick, purple if puzzled and deep red if angry!



CHIEF ENGINEER IGGY TOOTH

BREED: Iguanodon
PLANET OF HATCHING: Iguanos

DESCRIPTION: In charge of the ship's engines and security teams on board the Sauropod. Brave, tough and loyal, Iggy can turn a clawful of scrap into a vital piece of enemy-bashing machinery.

BEST DEFENCE: Stun claws and thumb spikes.

FUN FACT: Iggy built the Sauropod's brakes and helped install its mighty engines!



FLIGHT CREW

BREED: Dimorphodon
PLANET OF HATCHING: Dimorpho

DESCRIPTION: They help the main crew work the ship's controls and are ready to flap into action at a moment's notice.

BEST DEFENCE: Small and agile, the dimorphodon make tricky targets.

FUN FACT: The Alarm Pterosaur's warning shriek can be heard all over the ship!





MISSION ONE: RIDDLE OF THE RAPTORS

THE DSS SAUROPOD'S FIRST MISSION:
TO TRANSPORT HERBIVORE ATHLETES
TO THE GREAT DINOSAUR GAMES ON
THE PLANET OLYMPUS . . .

