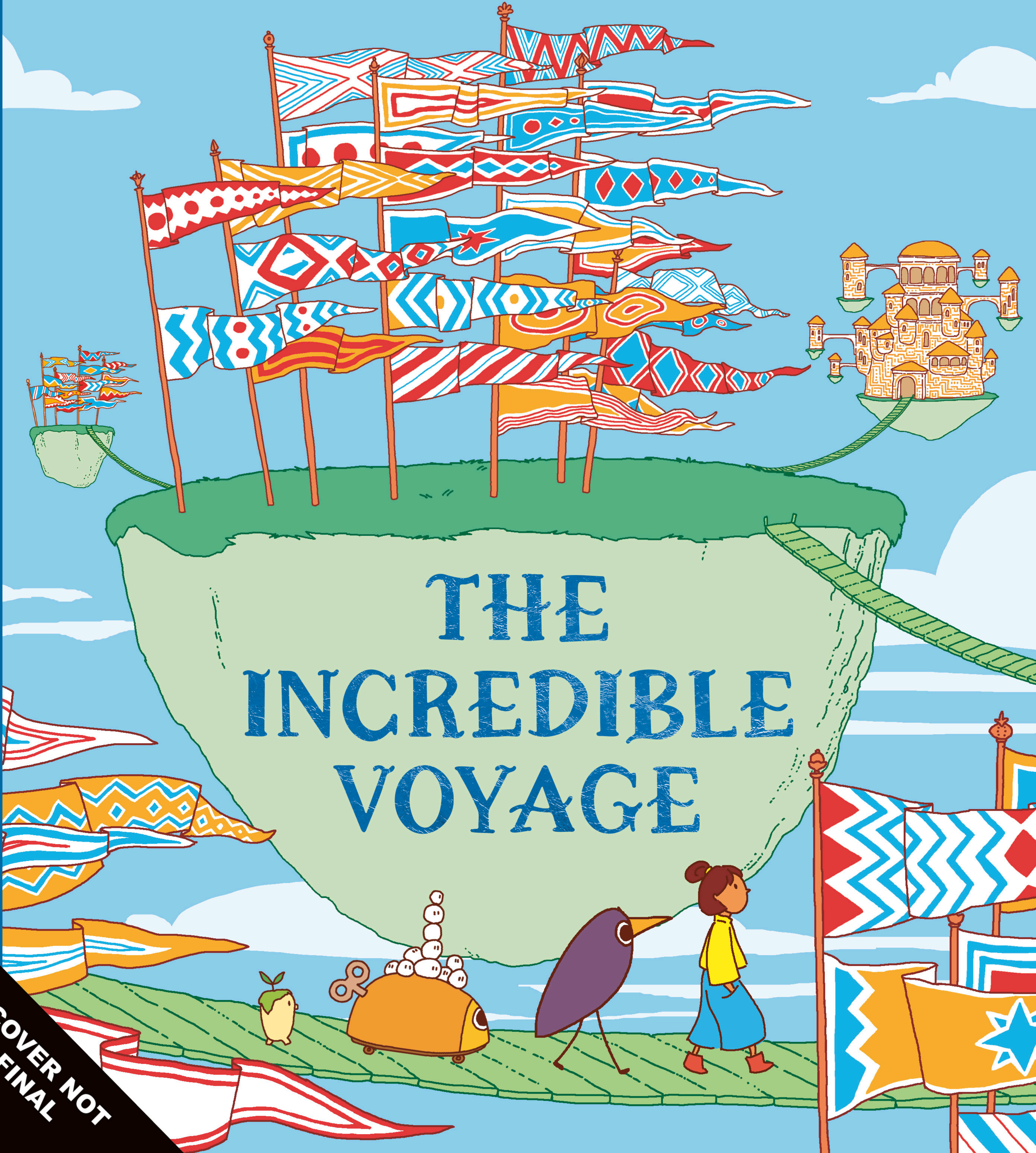


Aleksandra Arłymowska

THE  
INCREDIBLE  
VOYAGE

COVER NOT  
FINAL





Sophie and her brave company, taking three masks with them, walked through corridors of the ghost castle until they reached a strange labyrinth defending the entrance to the farthest room.

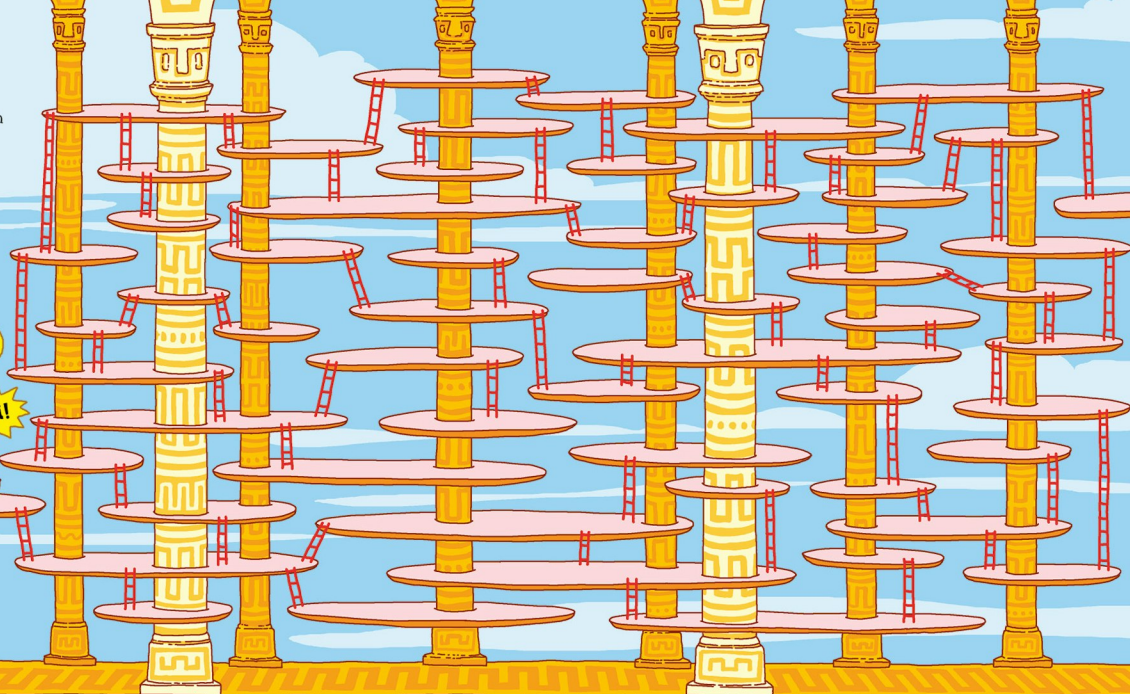
What an intriguing maze!

Are we lost?

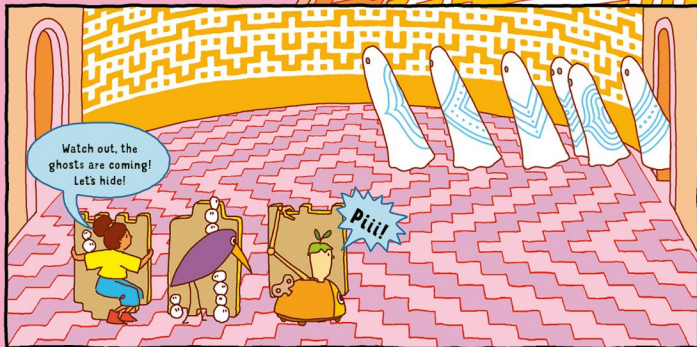
"BZZT" Indeed, but which way should we go?

Piii!

**FIND THE WAY UP AND DOWN THE LADDERS TO GET TO THE EXIT!**

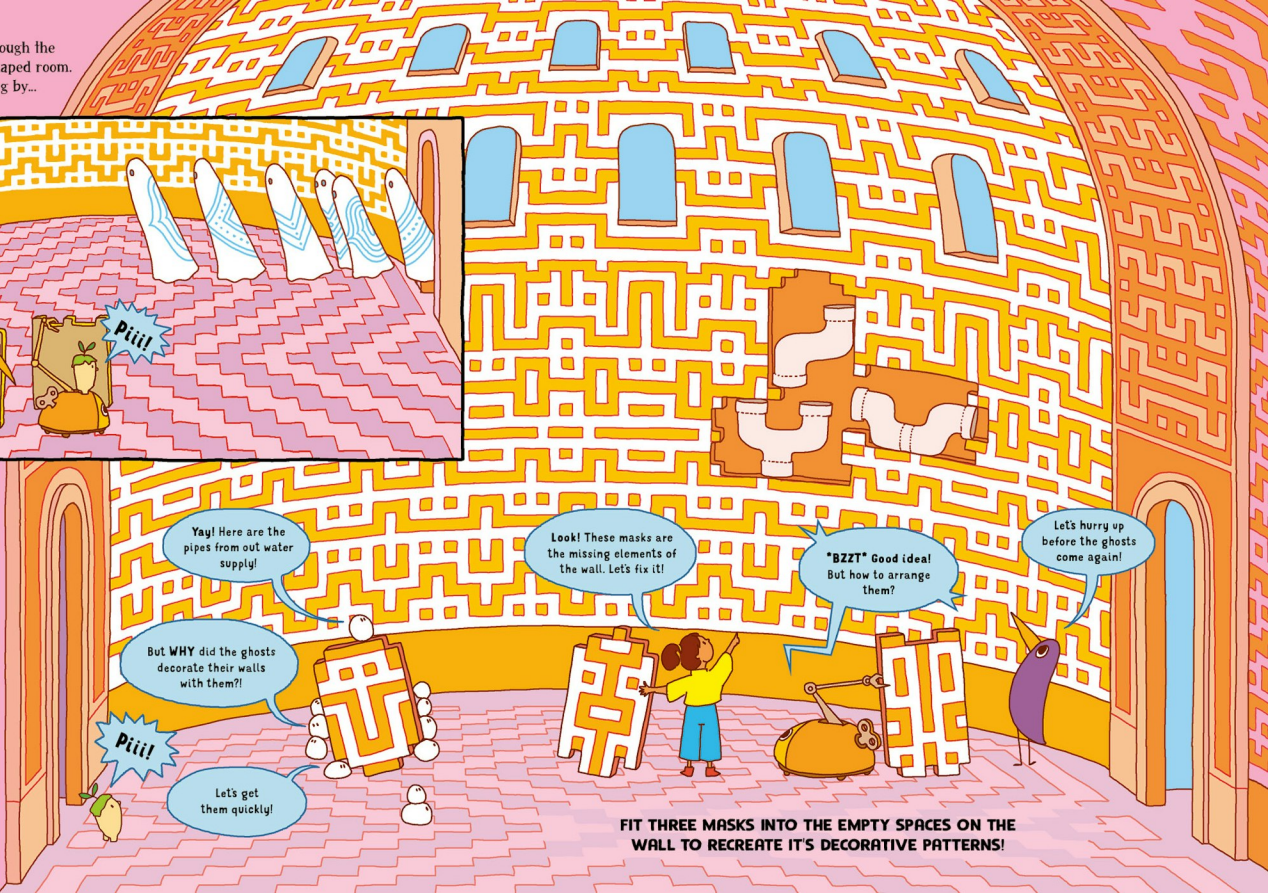


Having found the right way through the maze, they reached an oval-shaped room. Suddenly a few ghosts came passing by...



What luck! Our heroes managed to hide behind their masks and the ghosts didn't notice them! Could it be because the masks turned out to be surprisingly similar to the patterns on the walls?

Sophie, Bird, the Little Ones, the Mechanical Beetle and the Baby Stone could finally look a round. The walls were completely covered by meandering patterns. However, there was something wrong with them - part of the pattern on the wall was missing! Instead, there were 3 pipes that were hung in place!



Watch out, the ghosts are coming! Let's hide!

Pii!

Yay! Here are the pipes from our water supply!

Look! These masks are the missing elements of the wall. Let's fix it!

"BZZT" Good idea! But how to arrange them?

Let's hurry up before the ghosts come again!

But WHY did the ghosts decorate their walls with them?!

Pii!

Let's get them quickly!

**FIT THREE MASKS INTO THE EMPTY SPACES ON THE WALL TO RECREATE ITS DECORATIVE PATTERNS!**