

Welcome
to the
Museum

ADMIT ALL

Fungarium ACTIVITY BOOK

Curated by KATIE SCOTT and ESTER GAYA

Colouring,
drawing,
puzzles
& facts!

B
I
G
P
I
C
T
U
R
E
P
R
E
S
S

Royal
Botanic
Gardens **Kew**

Spot the difference

(there are 10 differences to spot)



Find a way through the maze of mushrooms

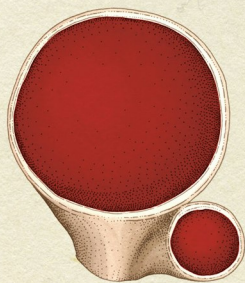
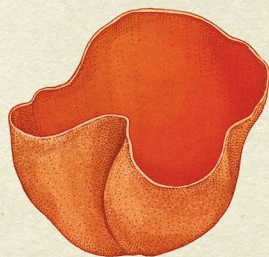
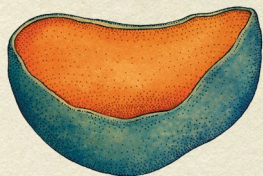
Way
in →

Finish ←



Circle the odd one out

(all but one are cup fungi)



Draw the stinkhorn emerging from its egg in the correct order



1

2

3

4