

**WE ARE NOT ALONE**



# CHAPTER II

## Stars and Planets

Stars, like our Sun, are huge balls of burning gas, and planets are the spheres that travel around them. There are two basic types of planet: rocky planets such as Earth, and gas giants like Jupiter. Some alien species, including the dreaded S.L.I.M.E., are parasitic survivors that thrive in many environments. However, most extraterrestrials can live only in a particular type of habitat. If this habitat changes, they must either adapt to survive, or move elsewhere. Some advanced species have mastered the art of terraforming: changing a planet to suit their needs.

### THE SOLAR SYSTEM

There are a variety of planets in our Solar System, several of which support alien life.



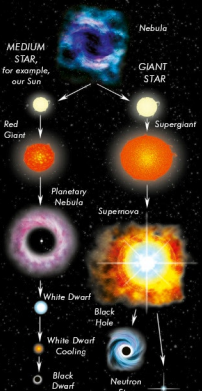
The four planets closest to the Sun are made mostly of rock and metal. Planets such as this are called terrestrial planets.

The next four planets are made mostly of hydrogen, helium and other gases. They are called gas giants.

The furthest planet from the Sun is Pluto: it is a small, rocky planet and the darkest place in the Solar System.

**PUBLISHER'S NOTE:**  
ALTHOUGH PROFESSOR GRAY DESCRIBES PLUTO AS THE NINTH PLANET IN THE SOLAR SYSTEM, ITS SMALL SIZE LED TO ITS RECLASSIFICATION IN 2006 AS A 'DWARF PLANET'. THE LARGEST KNOWN DWARF PLANET IN THE SOLAR SYSTEM IS EREB, WHICH WAS IDENTIFIED IN 2005. PROFESSOR GRAY STATES THAT 'SEVERAL' PLANETS WITHIN THE SOLAR SYSTEM SUPPORT LIFE. THE PUBLISHER WOULD LIKE TO MAKE CLEAR THAT THIS ASSERTION HAS NOT BEEN PROVEN BY MODERN SCIENTISTS.

### THE LIFE OF A STAR



Earth's Sun is a medium-sized star that formed 4.57 billion years ago from a cloud of hydrogen gas and dust called a nebula. Nuclear reactions inside the cloud converted the hydrogen into helium, creating heat and light. When the hydrogen is used up, the Sun will expand into a red giant, then become a planetary nebula as its outer layers drift away, before collapsing into a small, dense, extremely hot star called a white dwarf. It will cool over millions of years until it is a cold, dead star called a black dwarf.

Supergiants are large stars that burn up their fuel quickly, then explode into a supernova, eventually collapsing into a black hole or neutron star.



Here, Taurican terraforming machines undertake the first stage of making a planet habitable by releasing greenhouse gases into the atmosphere to warm it up.

**EARTH'S ATTRACTIONS** – Earth has one of the most appealing atmospheres of any planet. It is in the 'Goldilocks Zone' of the Solar System: it is neither too near nor too far from the Sun, but 'just right' for life to flourish. If it were warmer, water would evaporate more quickly, whereas if it were much colder, water would remain frozen. Earth has rich mineral resources and a large diversity of life, making it attractive to many alien species. Some aliens have used it as a model for treating their own habitable planets through terraforming (see above and right). Although Earth has been conserved until now for its unique properties, S.L.I.M.E. does not care for such distinctions – it is unscrupulous about which planets it destroys.

**TERRAFORMING** – Terraforming is the process of deliberately changing a planet's atmosphere and temperature to make it suitable for life. Many advanced alien species are aware that depending on only one planet is a risky strategy. Sooner or later, it may be struck by a deadly plague, ravaged by war or annihilated by a natural disaster, such as a meteor strike. Therefore, species such as the Grays, Tauricans and Repton Clones have concluded that they must spread out across the Galaxy and colonise more than one planet if they are to survive. Humans have not yet developed the technology for terraforming, but the booklet on the right describes the standard process.

#### THE BASIC PROCEDURE

- (1) Make the planet the correct temperature. To warm a planet up, release greenhouse gases to trap more of a star's rays.
- (2) Hurl asteroids or comets at the planet. These will break through the surface rock and melt any underground ice deposits.
- (3) Now that the atmosphere is warm and wet, introduce organisms such as algae to convert carbon dioxide into oxygen, making the air breathable for animals.

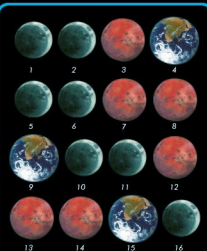
#### PARA-TERRAFORMING

The process of creating small-scale artificial habitats on a planet is much easier than terraforming. Some species have set up habitable domes on inhospitable planets. These provide bases from which to explore the rest of the planet and begin terraforming. The function of these domes can also be frivolous: the fun-loving Greens have erected artificial mountain ranges on the planet Aspenor, where holidaying aliens can go skiing.

An omnivorous Igenmian camper prepares to feast on a juvenile space grub. Or is it the other way around?



These two species inhabit the lava fields of Igenmia, preying upon each other.



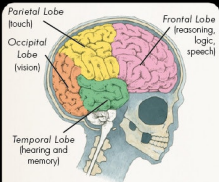
#### LOGIC TEST #4:

These planets are arranged in a certain pattern. Can you work out what it is? What would be the appearance of the 39th and 84th planets?

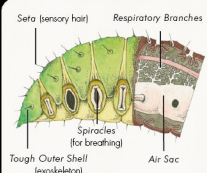
# CHAPTER III

## Alien Biology and Physiology

We now turn our attention to the study of alien life forms, particularly those that visit Earth. Comparing different species is one of the most fascinating aspects of alienology. Who would guess that aliens who developed hundreds of light years apart would have common features, such as eyes and opposable thumbs? And although it's true that many of these aliens have advanced brain development far beyond our own, it is humans (and only a small subset of those) who appear to possess the unique capability that aliens would most like to emulate: resistance to S.L.I.M.E.



**ALIEN BRAINS** - Nearly all alien species have a bony casing, or skull, to protect their brain. The Gray skull shown above is elongated, suggesting a large brain. Many scientists of S.P.A.C.E. believe that Grays need such large brains to support their advanced method of communicating using gamma rays, as well as to house their highly developed memories.



**EXOSKELETONS** - Most aliens have internal skeletons, as do humans. Insects, on the other hand, have exoskeletons: tough outer shells that protect the internal organs from damage. Small openings permit the creatures to breathe a noxious green mixture of oxygen and methane, on which they survive. Tau Warriors also have exoskeletons, much like those of lobsters on Earth.



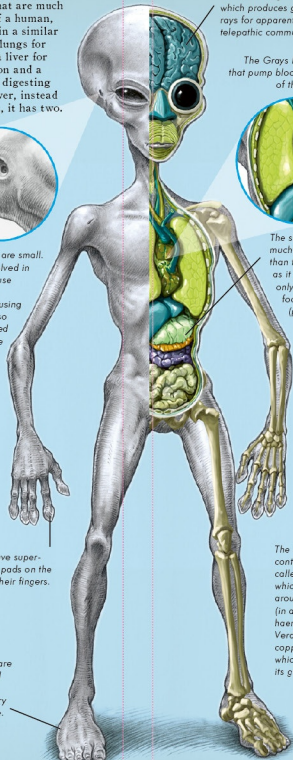
**EYEBALL EVOLUTION** - Due to the vast distances between the planets on which eyeballs have evolved, it is remarkable that they are in essence very similar. Almost all eyes, alien and human alike, share the following characteristics: a round shape, with pupils that change size to allow in varying amounts of light, as well as adjustable lenses that focus on objects at different distances. Specific adaptations depend on a species' environment. Decapodes have large eyes specially adapted for long-distance vision, which helps them seek out prey under the thick ice of Gelebus I. Light-emitting organs called photophores on the rear of each eyeball act as headlights, illuminating prey in the gloomy water. The slitlike pupils of Repton Clones give them excellent night vision. They can also see in infrared, detecting the body heat of nearby prey. Hiding from them is nearly impossible, so the only solution when faced with an angry Repton is to run.

### GRAY'S ANATOMY

A Gray has an array of organs that are much like those of a human, and it ages in a similar way. It has lungs for breathing, a liver for detoxification and a stomach for digesting food. However, instead of one heart, it has two.



A Gray's ears are small. They have evolved in this way because Grays usually communicate using gamma rays, so they rarely need to listen to one another talk.



The brain contains a bioelectrical generator, which produces gamma rays for apparently telepathic communication.

The Grays have two hearts that pump blood to different parts of the body.



The stomach is a much simpler organ than that of a human, as it needs to digest only one type of food: purple pap (purple powder mixed with water).

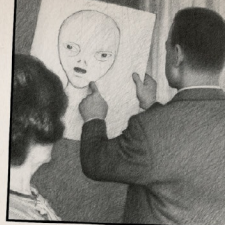
Grays have super-sensitive pads on the ends of their fingers.

A Gray's feet are less developed than its hands but are still very touch-sensitive.

The blood of Gray aliens contains a compound called verdigrin, which carries oxygen around the body (in a similar way to haemoglobin in humans). Verdigrin contains copper-carbonate, which gives the blood its green tinge.

### ABDUCTIONS BY ALIENS

Throughout human history, there have been several notable cases of abduction by aliens. The most common reason for such abductions is to carry out research, because some humans appear to have a unique composition that makes them resistant to S.L.I.M.E. This resistance is obviously crucial in the battle against this slippery menace, for if we can harness such a feature and reproduce it in species across the Galaxy, our defences will be impenetrable. As a S.P.A.C.E. cadet, it is likely that you will come into contact with aliens in the course of your studies. If you find yourself being abducted, it is advisable not to panic, however threatening the aliens' probes may appear. Most abductions of humans are harmless and are followed by a short-term-memory wipe.



The Hills describe the appearance of their captors.

### COUPLE ABDUCTED BY ALIENS

Betty and Barney Hill, a couple from Portsmouth, claim to have survived an alien abduction several years ago. While driving home on 19 September 1961, the pair say they were snatched from their vehicle and taken aboard a disc-shaped spacecraft. There, they were subjected to medical examinations conducted by small men with large, wide-set eyes. When Mrs Hill asked her captors where they were from, they apparently showed her a map of a twin star system called Zeta Reticuli.

The truth: Alien abductions of humans happen regularly. The aliens are trying to establish what it is about some humans that makes them immune to S.L.I.M.E. Clearly the Grays who probed the hills didn't do a very good job of the memory wipe. Tut-tut, fellas. Get it right next time!

**HEAT RESISTANCE** - The lobsterlike Tau Warriors have a tough body covering that can withstand the intense heat of their volcanic home planet, Vulkatraz.

**WINGS** - Large wings allow the Hyadeans to live in cliff-face settlements among their home planet's rugged mountainous terrain.

**BIOLUMINESCENCE** - The Gasbags produce their own light, called bioluminescence, to help them see one another among the dark clouds of Jupiter.

**ADVANCED TECHNOLOGY** - An over-reliance on technology can lead to extreme physiological changes. The Cyberbrains, for example, have done away with bodies altogether in favour of mechanical housings for their brains. Let us hope that human reliance on labour-saving devices and motorised transportation doesn't render their bodies obsolete!



### LOGIC TEST #5:

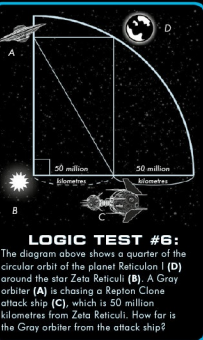
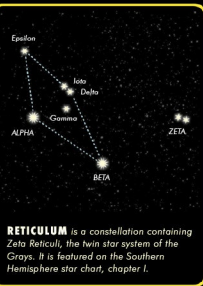
A Gray scientist is trying to move a Legation widdog, an Igmienian chomper and an Alpha-Cantaurian berry tree from one tab to another. He can take only one at a time. If he leaves the widdog with the chomper, the widdog will eat the chomper. If he leaves the chomper with the tree, the chomper will eat the berries. How can the scientist make the move without anything getting eaten?



# CHAPTER IV

## Humanoid Aliens

Even though they come from planets far, far away, it is amazing how many aliens resemble humans in basic body shape. Of these aliens, the Grays and the Tauricans should be considered the staunchest allies of humans. These noble creatures are highly intelligent and desire peace between species. They are key players on the Intergalactic Council, an organisation that champions alien rights and works to prevent wars between species by providing a platform for interspecies communication. All of these alien types are threatened by the encroachment of S.L.I.M.E.



**ALIENS IN DISGUISE** - Aliens visiting Earth usually disguise themselves, because humans have proved on several occasions to be fearful of outsiders, showing aggression instead of a warm welcome. The human alienologist must therefore treat any unfamiliar person or creature as a potential extraterrestrial - even those that appear to be ordinary humans or animals. Experience shows that there are always telltale signs of an alien in disguise, such as almond-shaped eyes, clawlike nails, extravagantly wrinkled skin, a tiny nose or an unusual diet (for example, Insectons eat only live mammals).

### GRAYS

The Grays often visit Earth for the purposes of research. They study humans not only to find out what makes some of them imperious to S.L.I.M.E., but also because they are fascinated by humans' high emotional intelligence, which is rare among alien species.

**GENERAL DESCRIPTION:** In their normal form, Grays have a body shape similar to that of humans. However, Grays are shape-shifters, able to adopt the forms of other species (including humans) when necessary. S.P.A.C.E. cadets should be able to spot Grays in any guise by the fact that their eyes and heads remain large in proportion to their bodies, while their noses and ears stay small.

**EARTH HABITATS:** On Earth, Grays are likely to be found on university campuses, in libraries and in science laboratories late at night.

The pads on a Gray's fingers detect electronic impulses. Placed against your temples, they enable a Gray alien to read your mind.



**MISSION:** The goal of the Grays is to protect and study the human race, because the key to defeating S.L.I.M.E. lies within human DNA.

**NOTES:** The Grays' home planet is covered by a vast city that houses the huge population. To secure more living space, the Gray Federation has spread out onto previously uninhabited planets in the Orion Arm of the galaxy. Grays usually interact with one another silently using gamma rays, but they can adopt the communication methods of other species when necessary. This is fortunate for humans, whose cells are easily damaged by gamma rays.

### TAURICANS

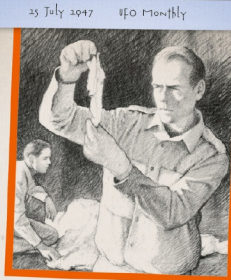
In ancient times, the Tauricans lived among the Pleiades, a group of stars 440 light years from Earth. However, they were forced to relocate to New Taurica, near the star Alpha Centauri, when their home planet was destroyed by S.L.I.M.E.

**GENERAL DESCRIPTION:** The light-haired Tauricans wear long, flowing robes and can be identified by their strange yet unmistakable odour of fish.

**EARTH HABITATS:** You are likely to find disgraced Tauricans in state and national capitals among politicians and lobbyists.

**MISSION:** The Tauricans work to prevent S.L.I.M.E. from devastating other species' home planets the way it destroyed theirs. They seek to guide primitive species for their own good, going so far as to infiltrate foreign governments and even holding important public offices.

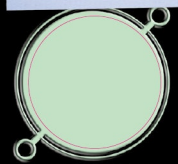
**NOTES:** Tauricans are hermaphrodites - they have both male and female reproductive organs. They form breeding pairs in which either partner can act as the male or female.



### GOVERNMENT COVERS UP ALIEN EVIDENCE

We all know that the government can't stand the idea of ordinary people finding out the truth about aliens. But on 8 July, somebody leaked out big time when the Roswell Army Air Field issued a press release stating that personnel from the 509th Bomb Group had recovered a crashed 'flying disc' from a ranch near Roswell, New Mexico. Later that day, the Commanding General of the Eighth Air Force was less than convincing when he stated that, in fact, all they had recovered were the remains of a weather balloon.

The JFHQ operatives intercepted a distress call sent to Petalicon I from the orbiter to say that there had been an explosion in the fuel tank. Below is a sample of prototium, a mineral unavailable anywhere on earth, which was retrieved from the crash site.



### SPECIMEN

Above, a specimen of prototium - an insulating material used as cladding by the Grays. The entire species wears this functional covering in cold climates, not having an interest in changing fashions as humans do. In fact, the Grays are fascinated by this intriguing aspect of human behaviour. When they are in disguise on Earth, they struggle to coordinate their human outfits.

### MARTIANS

These aliens, which had a similar society to that of humans - and a similar genetic composition - are thought to have become extinct in the last hundred years. They lived on the northern part of Mars, which once had flowing water, but they are believed to have died out when their atmosphere became choked with methane gases from industry.

**GENERAL DESCRIPTION:** Similar in appearance to humans, with large, elfin ears and domed foreheads.

**MISSION:** It is believed that the Martians concocted intricate plans to invade and conquer Earth, seeing it as a good source of raw materials and food and as a suitable alternative habitat in the face of a polluted home planet. The Martians believed Earth's inhabitants to be little more than technologically advanced primates.

**NOTES:** Recent evidence suggests that some Martians may have escaped their dying planet. Their current location is unknown.



## CHAPTER V Technological Aliens

Many species use technology to improve their physical or mental abilities. The Cyberbrains long to extend their lifespans. To this end, they have replaced their body parts with durable mechanical components. They substituted their skulls for protective helmets made from a super-strong material called silicentum, which they believed would never break. However, a freak change in the atmosphere on their volcanic planet increased the temperature. Unfortunately, the Cyberbrains discovered that this caused some helmets to shatter – leaving many vulnerable brains exposed.

### REPTON CLONES

**GENERAL DESCRIPTION:** Reptilian in appearance, with forked tongues, bony ear frills and slitlike pupils.

**EARTH HABITATS:** Wearing human body suits, Reptons have been known to infiltrate positions of power in armies or large corporations on Earth. They need warmth to survive, so they are most likely to be seen in the summer in large cities. They occasionally conceal themselves in swamps in subtropical zones.

**MISSION:** Long-term, to conquer the Galaxy. Short-term, to select the next emperor.

**NOTES:** Five thousand clones are allotted to each attack ship. A mother ship is home to two hundred thousand clones. The technology of the Reptons is advanced but no longer evolving, since becoming clones, they've lost the capacity for original ideas.



### SPECIMEN

Above, a sample of the shed skin of a Repton Clone

### DENEBIAN CYBORGS



Although they look like machines, Denebian Cyborgs are living organisms encased in mechanical shells that give them super-strength. They are not very intelligent and have never mastered the art of terraforming. When their ancestors destroyed the wildlife on their home planet, *Batorian*, through over-exploitation, they were forced to offer their services to other species in exchange for a new home on foreign planets.

**GENERAL DESCRIPTION:** There are many different varieties of Denebian Cyborg, but they all have mechanical exoskeletons.

**EARTH HABITATS:** Look for these aliens in areas where machinery abounds – car scrapyards, factories or power plants. They disguise themselves as machines to pass unnoticed.

**MISSION:** To find homes on other planets.

**NOTES:** They often work for the Grays, but they will serve any race that will house them, including the Tauticans, Traders and Proboskians.



The surface of a Cyberbrain's brain flickers with a rainbow of colours, making its thoughts visible to those who know how to read them. With a transparent helmet in place of a skull, a Cyberbrain finds it difficult to keep its plans secret from enemies in times of war.



Infant Cyberbrains are grown in laboratories in small silicentum spheres.

### CYBERBRAINS

Because the Cyberbrains' volcanic home is no longer suitable for habitation, they wage war against the Tau Warriors in the hope of ultimately conquering the Taus' planet, *Vulcatraz*, which has a similar volcanic environment.



Cyberbrain fliers are constructed from silicentum.

**GENERAL DESCRIPTION:** These tall, mechanical creatures are identifiable chiefly by their transparent helmets. They have good vision, being endowed with telescopic eyes.

**EARTH HABITATS:** Cyberbrains hang out in laboratories or research stations on Earth, looking for technology to extend their lives and help them in their war against the Tau Warriors. They try to ensure they are not seen by humans.

**MISSION:** Long-term, to extend their lifespans and ultimately defeat death. Short-term, to conquer *Vulcatraz*.

**NOTES:** They communicate by reading the colour patterns on one another's brains, as well as by emitting and receiving microwaves.



### TAU WARRIORS

Enemies of the Cyberbrains for many years, the Tau live in hives ruled over by the Red Queen. They are perfectly adapted to life in an unforgiving volcanic environment.

**GENERAL DESCRIPTION:** The Tau Warriors have tough, lobster-like exoskeletons.

**EARTH HABITATS:** Although rarely found on Earth, they occasionally appear near active volcanoes. If you look down into a crater, you may be able to spot their crafts, Tau destroyers, lying half-submerged in magma.

**MISSION:** To destroy all Cyberbrains.

**NOTES:** The Taus are technologically advanced. Their hives, created in volcanic magma tunnels, are packed with gadgetry, and their heat-generating suits for use in cold habitats are terrific feats of engineering.

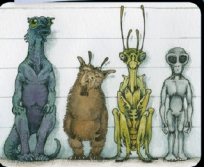


The terrible Red Queen



**NATIONAL GUARD HERO KILLED BY ALIENS?**  
On 7 January of this year, war hero and Kentucky Air National Guard pilot Thomas Mantell was asked to fly his P-51 Mustang to check out a UFO spotted near Fort Knox. He set off, but soon afterwards his plane crashed. Project Sign, the government's UFO study group, has just terminated its investigation of the crash, but an official conclusion has not been reached. A leaked document from within Project Sign has indicated that Mantell was the victim of cowardly extraterrestrial beings who shot him down on sight.

The Truth  
The aliens aboard the decapode hopper didn't kill Mantell. Tragically, he flew too high in pursuit of the hopper, running out of oxygen and going into a horrible tailspin from which there was no recovery.



### LOGIC TEST #7:

At the international spaceship, a naughty alien juvenile has scrawled graffiti on the side of a spaceship.

Blue alien: The brown alien sprayed it!  
Brown alien: It was the gray alien!  
Gold alien: I didn't do it, so boo!  
Gray alien: The brown alien is lying!

Of course, only one alien juvenile is telling the truth. Which one did the spraying?