



Welcome  
to the  
Museum

ADMIT ALL

# Fungarium POSTCARDS

Curated by KATIE SCOTT  
and ESTER GAYA

Royal  
Botanic  
Gardens **Kew**

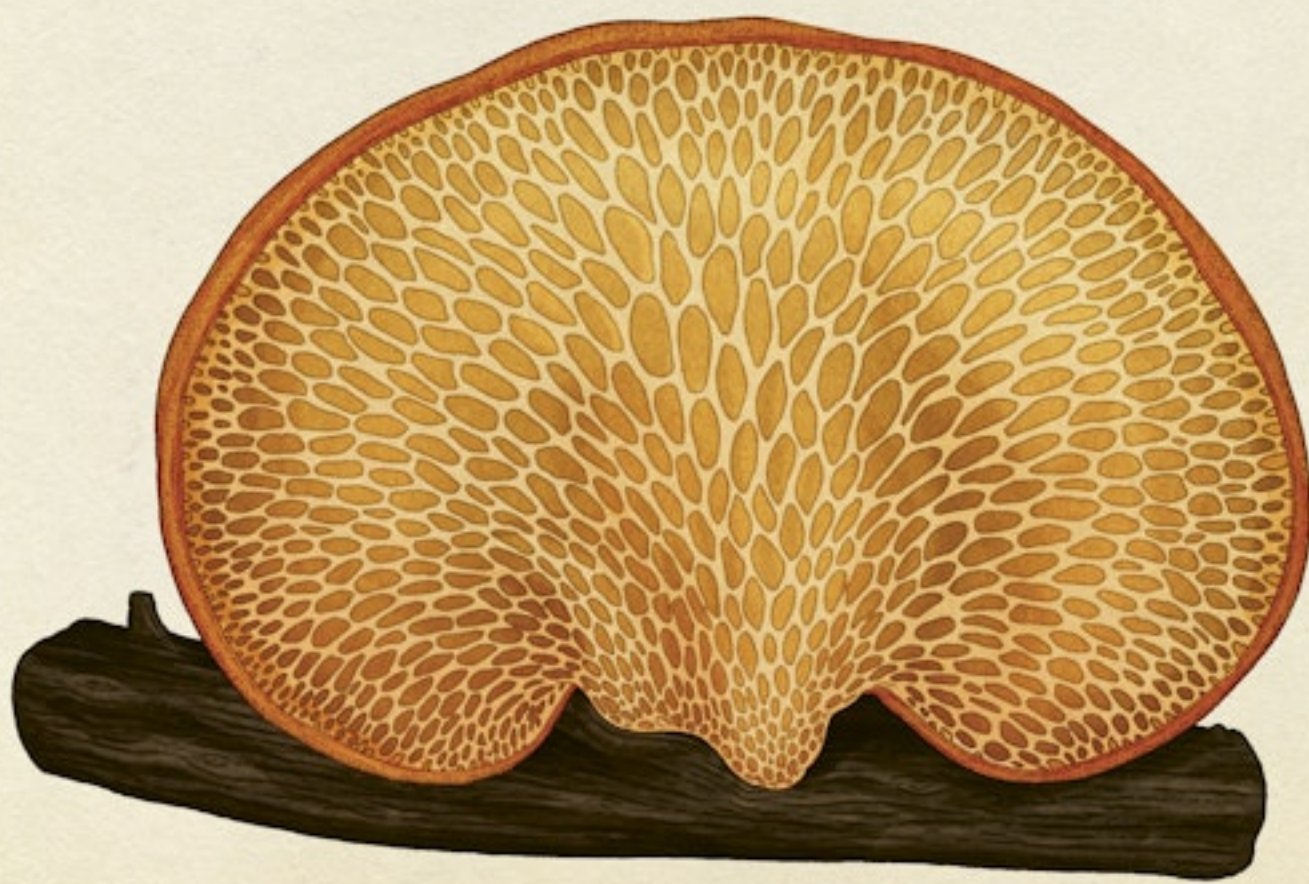
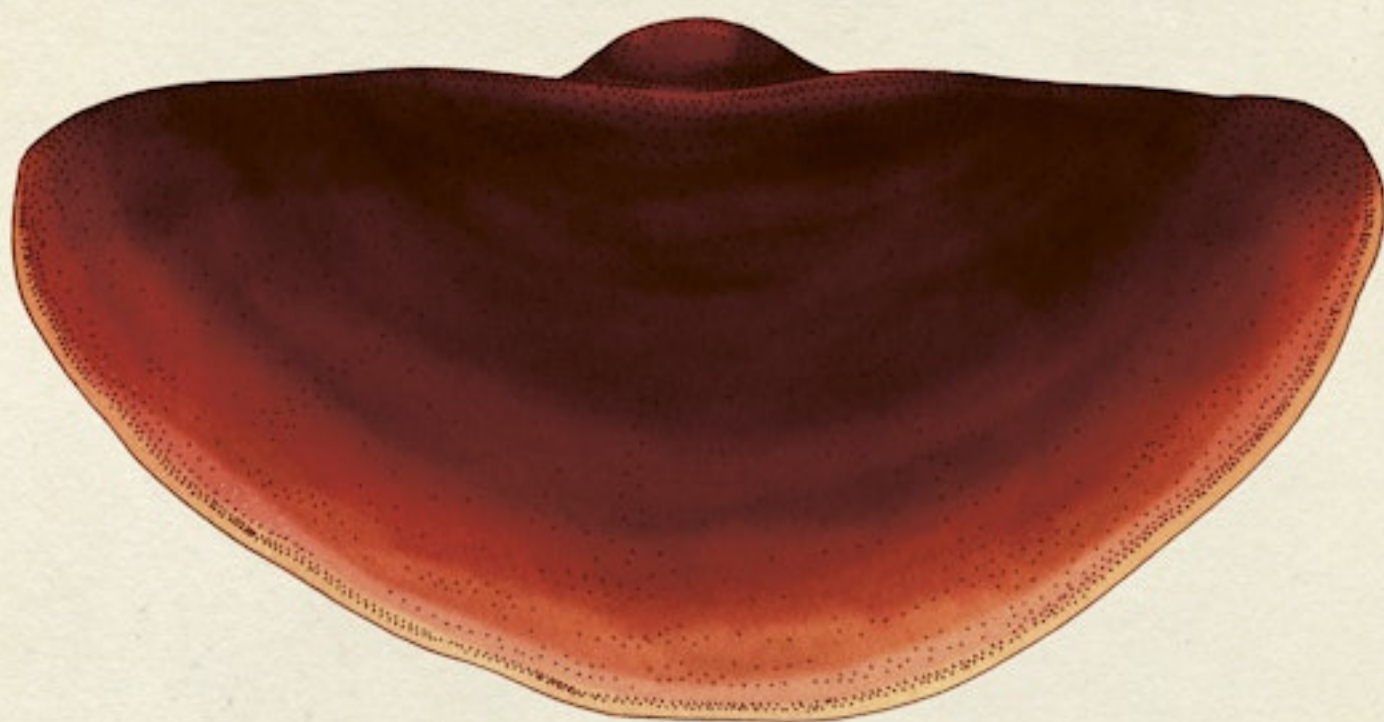






**Top to bottom, from left:** Common puffball, sculpted puffball, bird's nest fungus, stinkhorn fungus, earthstar fungus, veiled lady, rounded earthstar, common earthball



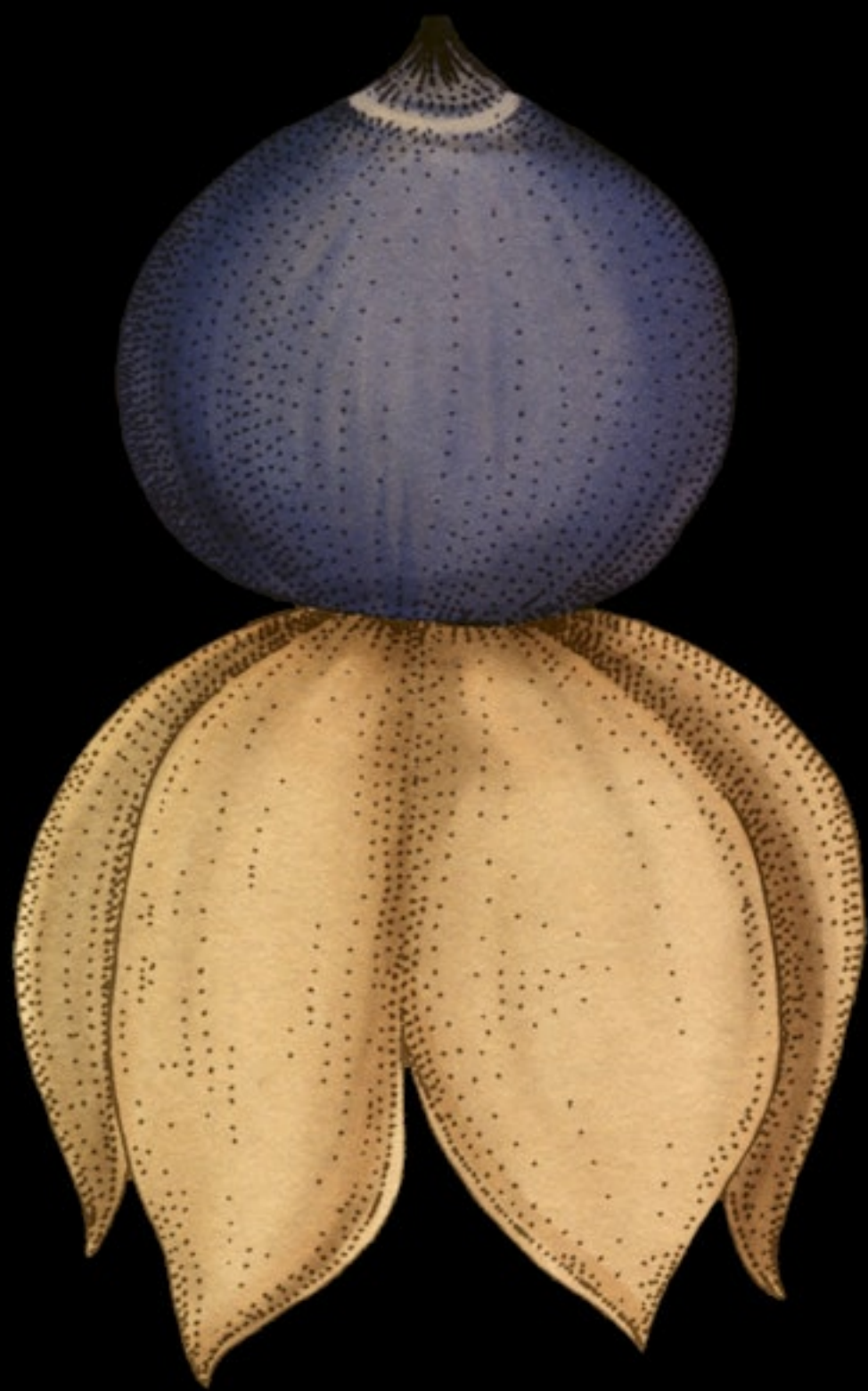




**Top to bottom:** Giant elm bracket, beefsteak fungus, oak polypore

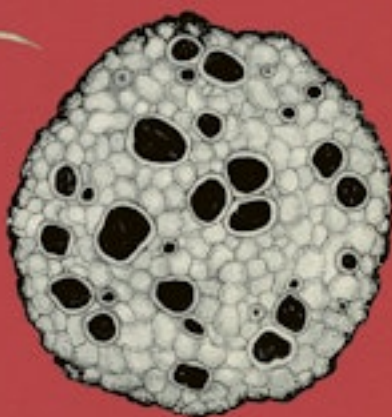
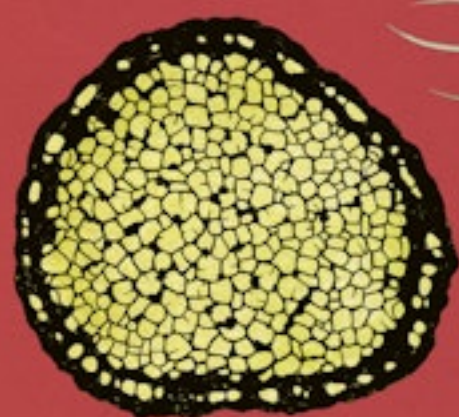
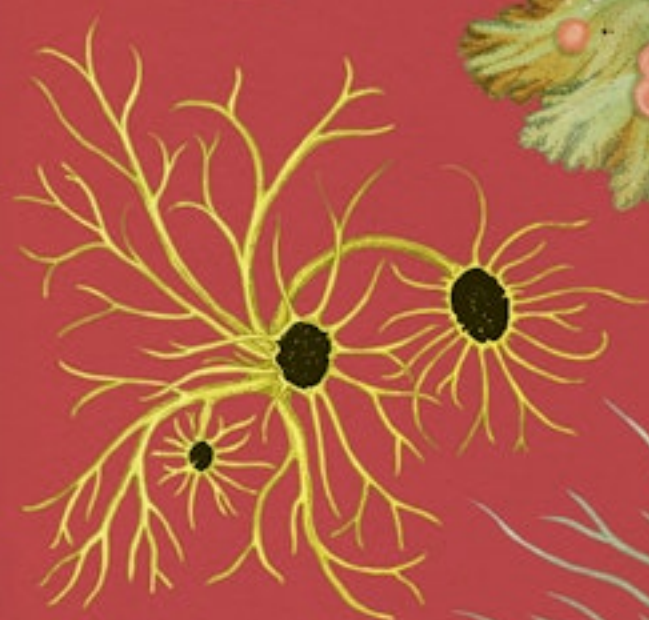
Fungarium • © Big Picture Press, Katie Scott and the Board of Trustees of the Royal Botanic Gardens, Kew















**Top to bottom, from left:** *Cora pavonia*, bullseye lichen, shield lichen, brown-eyed wolf lichen, beard lichen, golden-eye lichen, map lichen, *Tephromela atra*, British soldiers' lichen, umbrella basidiolichen, pin lichen



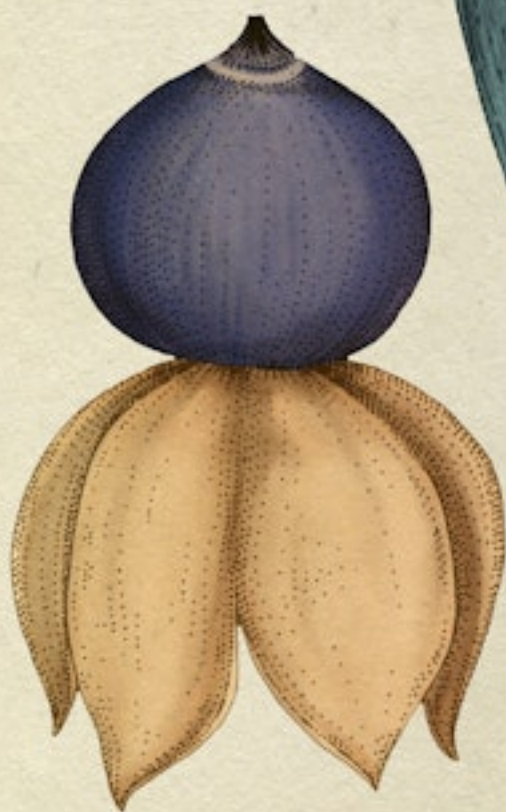




Satan's bolete (exterior view above,  
interior view below)

Fungarium • © Big Picture Press, Katie Scott and the  
Board of Trustees of the Royal Botanic Gardens, Kew









**Clockwise from top-left:** Turkeytail fungus,  
violet webcap, Satan's bolete, blue roundhead,  
earthstar fungus













**Clockwise from top-left:** *Meliola urariae*, leaf with fungal colonies, *Strigula orbicularis* sporing body and thallus, *Strigula orbicularis* cross-section, *Tricharia urceolata*, *Peltistroma juruanum*, *Parenclerula macowanianus* section of sporing body, *Parenclerula macowanianus* mycelium growth on leaf, shield fungus

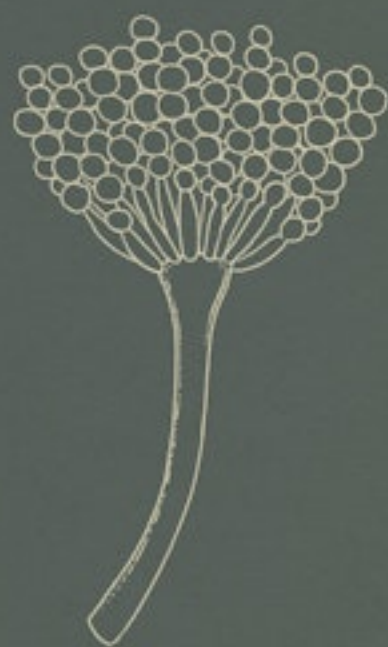
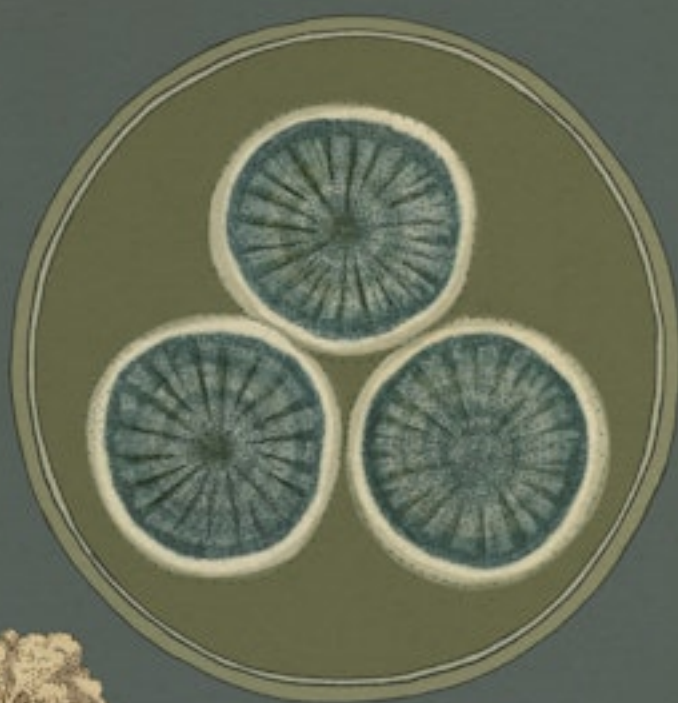






*Umbrella basidiolichen*

Fungarium • © Big Picture Press, Katie Scott and the  
Board of Trustees of the Royal Botanic Gardens, Kew







**Top to bottom, from left:** *Glarea lozoyensis*,  
*Penicillium rubens* growing on a culture plate,  
*Aspergillus terreus*, *Isaria sinclairii*, *Penicillium*  
*rubens* under a microscope, *Aspergillus terreus*,  
*Tolypocladium inflatum*















**Top to bottom, from left:** Spring orange peel fungus, *Plectania chilensis*, eyelash fungus, scarlet elf cap, *Cookeina speciosa*, orange peel fungus, hare's ear, black earth tongue, green elf cup







**Top to bottom:** Blue mould rot fungus on apple,  
toxic black mould, *Trichoderma viride*

Fungarium • © Big Picture Press, Katie Scott and the  
Board of Trustees of the Royal Botanic Gardens, Kew



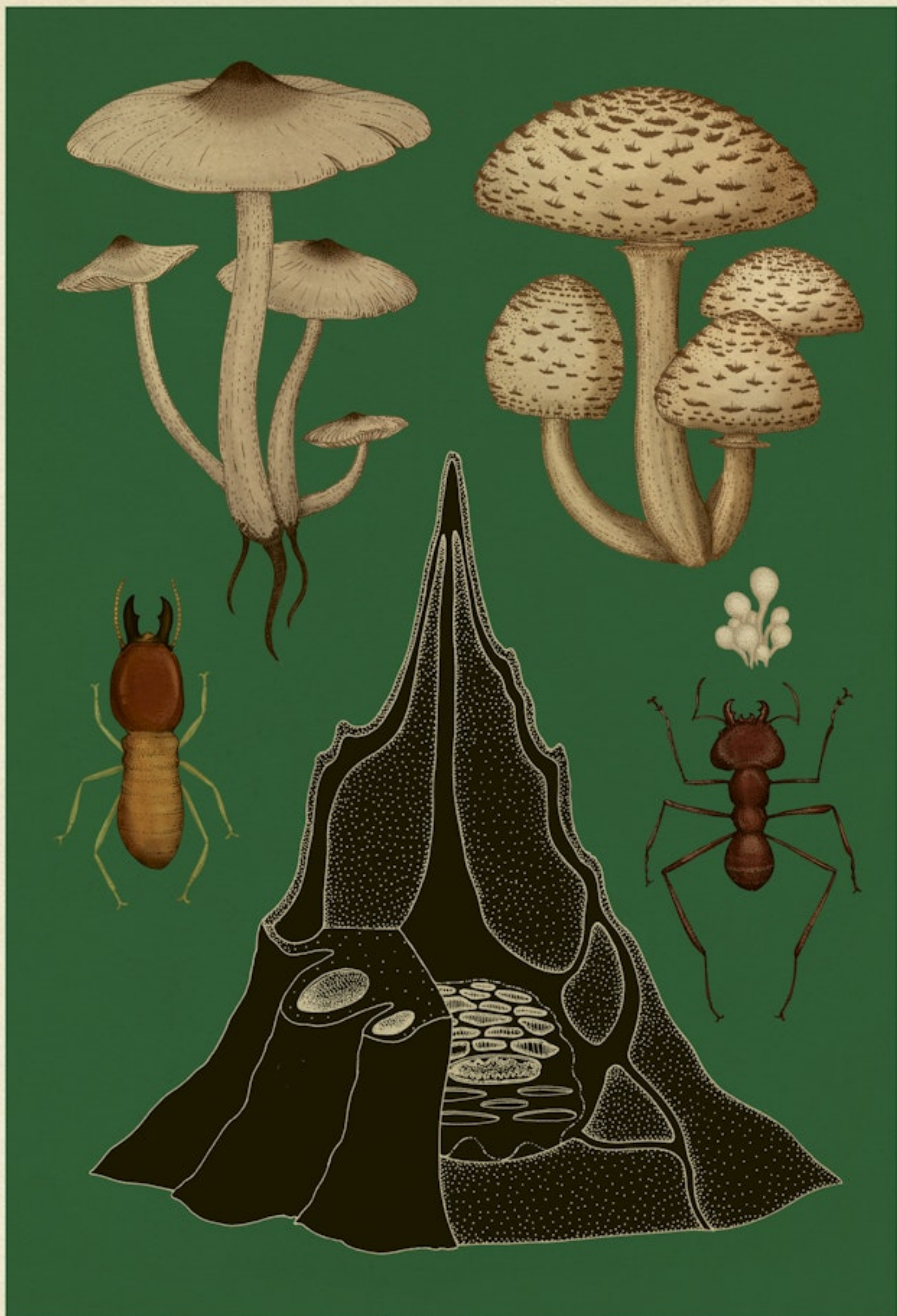
















**Clockwise from top-left:** Termite mushroom,  
ant mushroom, ant food, leaf-cutting ant,  
termite mound, fungus-growing termite







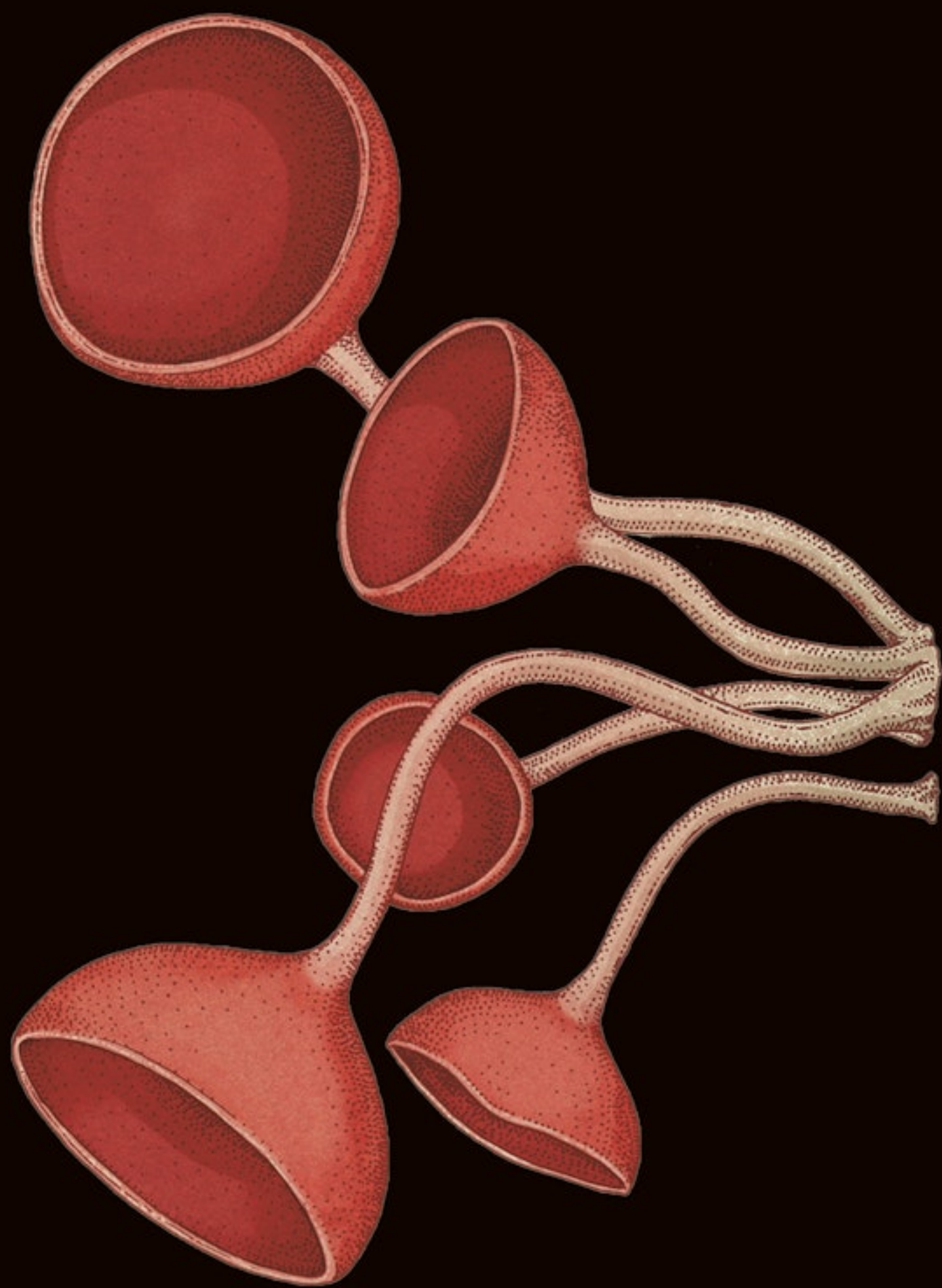








**Top to bottom, from left:** Shaggy ink cap, waxcap, fly agaric, shaggy scalycap, violet webcap, waxcap, waxcap, blue roundhead, waxcap







*Cookeina speciosa*

Fungarium • © Big Picture Press, Katie Scott and the  
Board of Trustees of the Royal Botanic Gardens, Kew







[True more!](#)







**Clockwise from top-left:** Caesar's mushroom, chanterelle, waxcap, slime mould, golden shield lichen, slime mould, death cap







Ant mushroom



























Ecosystem: Temperate forest

Fungarium • © Big Picture Press, Katie Scott and the  
Board of Trustees of the Royal Botanic Gardens, Kew







**Top to bottom, from left:** Basal stem rot, rice blast disease, Dutch elm disease, witches' broom disease, dark honey fungus











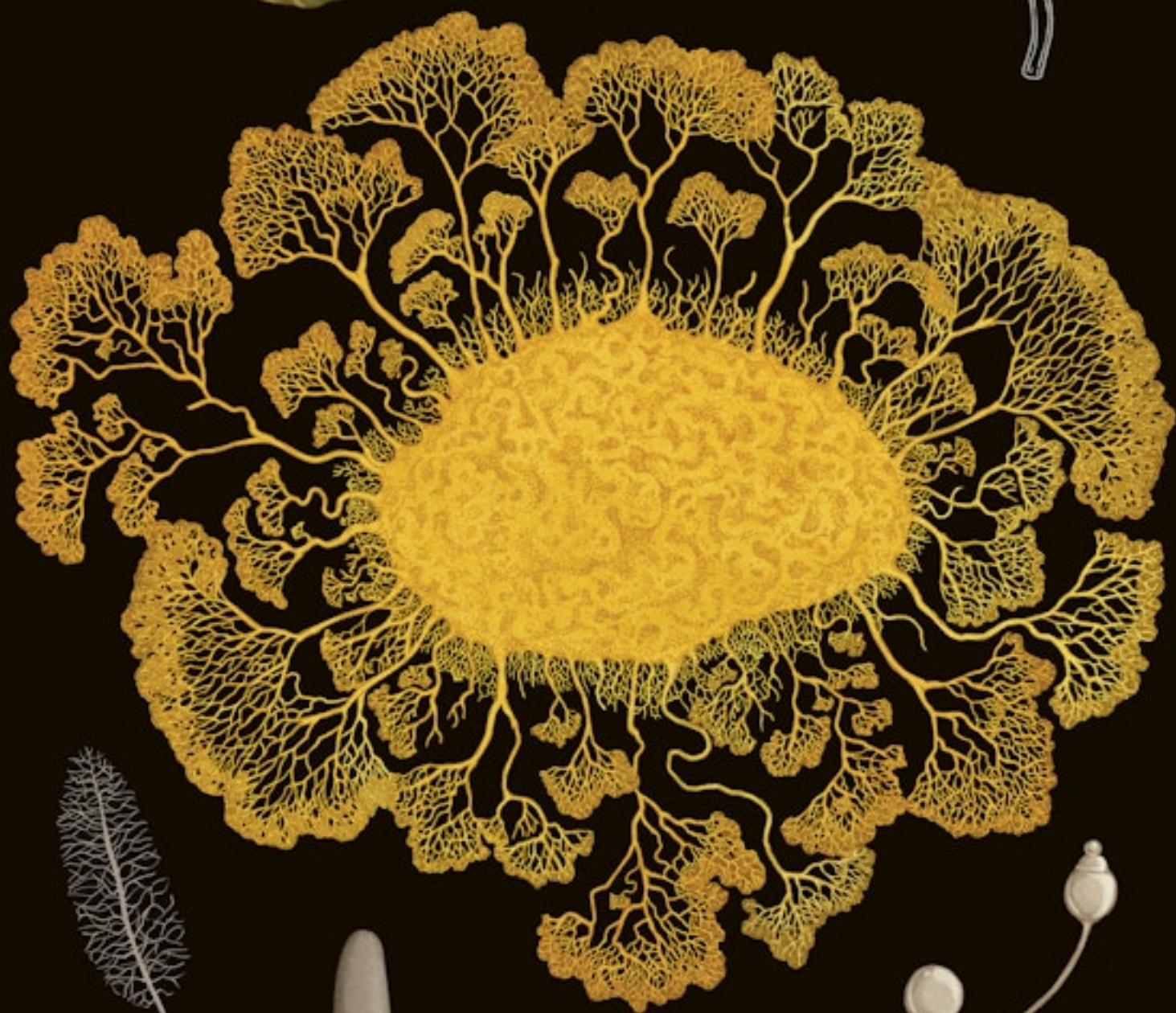


**Clockwise from top-left:** Cross-section of a root showing the main types of mycorrhizas (arbuscular orchid, ericoid, ectomycorrhizas, non-mycorrhizal), saffron milkcap (sporing body and root with ectomycorrhizas), *Cenococcum geophilum*













**Top to bottom, from left:** *Phytophthora infestans*  
(leaves, potato affected with blight and sporangia),  
*Physarum polycephalum*, *Physarum* sporing  
structures, *Comatricha typhoides*, *Comatricha nigra*,  
*Leocarpus fragilis*, *Dictyostelium discoideum*,  
*Hemitrichia calyculata*













Dark honey fungus

Fungarium • © Big Picture Press, Katie Scott and the  
Board of Trustees of the Royal Botanic Gardens, Kew







**Clockwise from top-left:** Dong chong xia cao, weevil fungus, wasp fungus, white muscardine disease, caterpillar fungus, zombie ant fungus, ant fungus





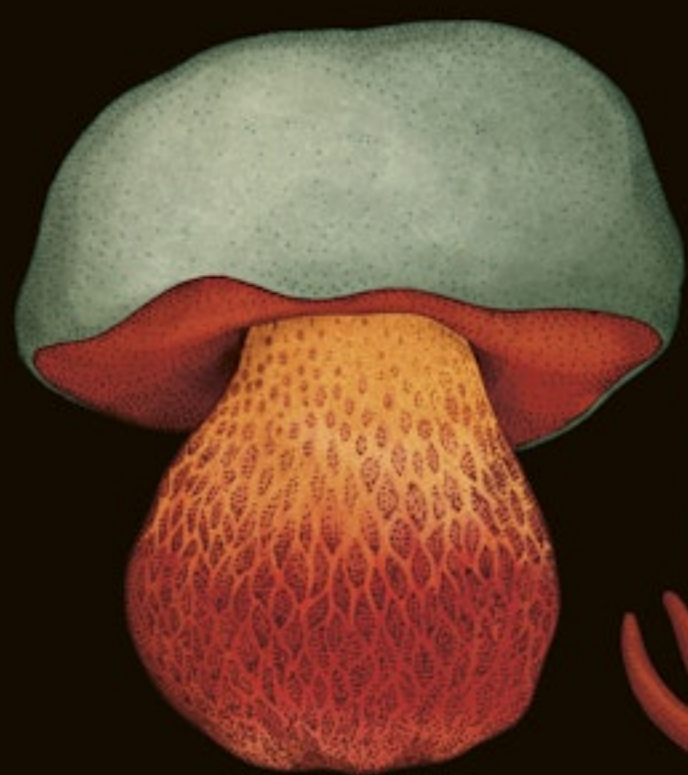








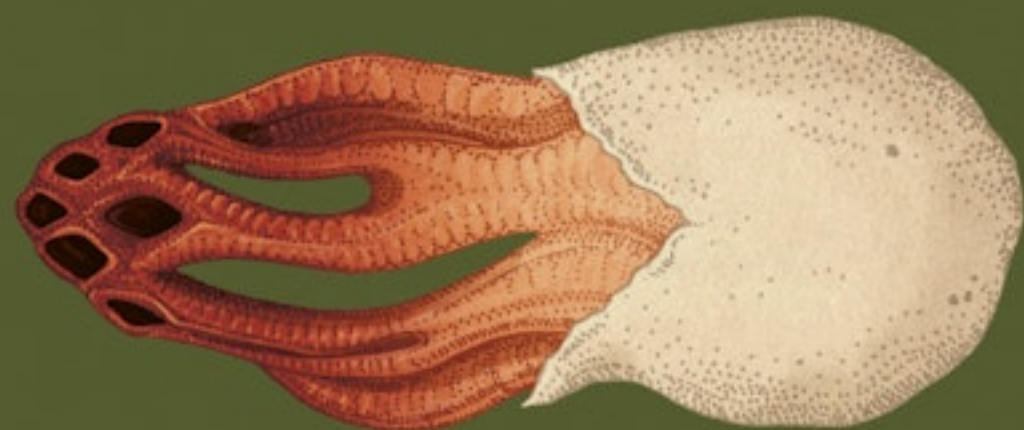
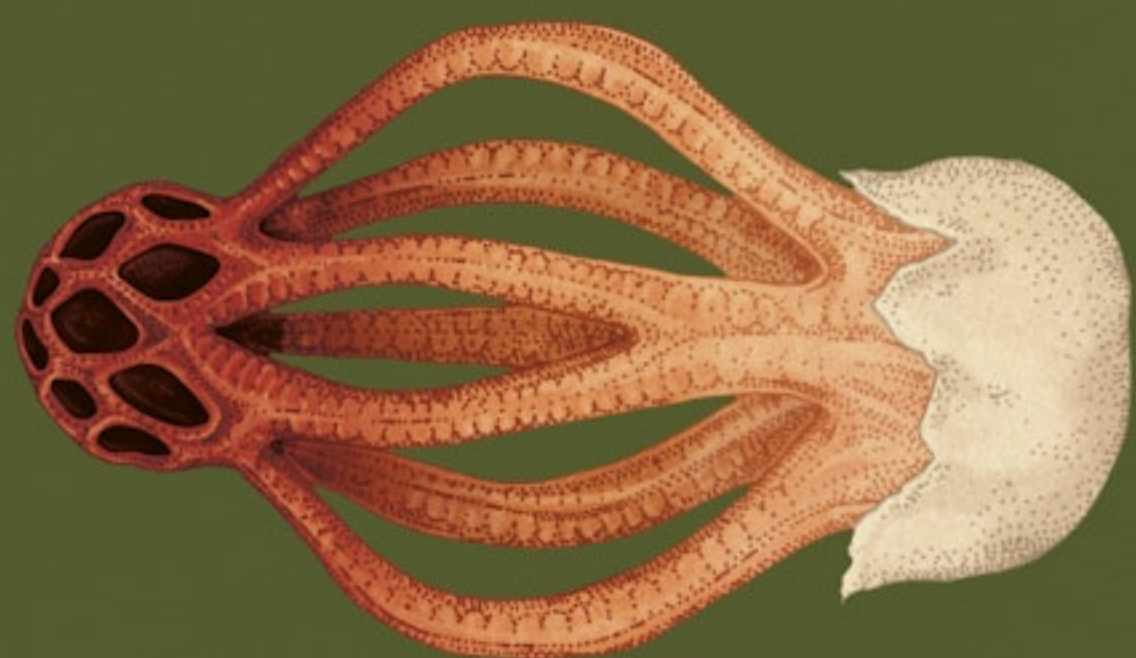
**Top to bottom, from left:** Matsutake, button mushroom, chanterelle, black truffle, Caesar's mushroom, true morel, baker's yeast, *Penicillium roqueforti*, Zeller's bolete, cabbage lungwort







**Clockwise from top-left:** Satan's bolete, kaentake, Satan's bolete (interior), ergot fungus, false morel, death cap, destroying angel, ergot fungus (sporing body)







Fruiting stinkhorn fungus

Fungarium • © Big Picture Press, Katie Scott and the  
Board of Trustees of the Royal Botanic Gardens, Kew









**Top to bottom, from left:** Black earth tongue,  
*Plectania chilensis*, ergot fungus, shaggy scalycap,  
matsuke, button mushroom, dark honey fungus,  
true morel

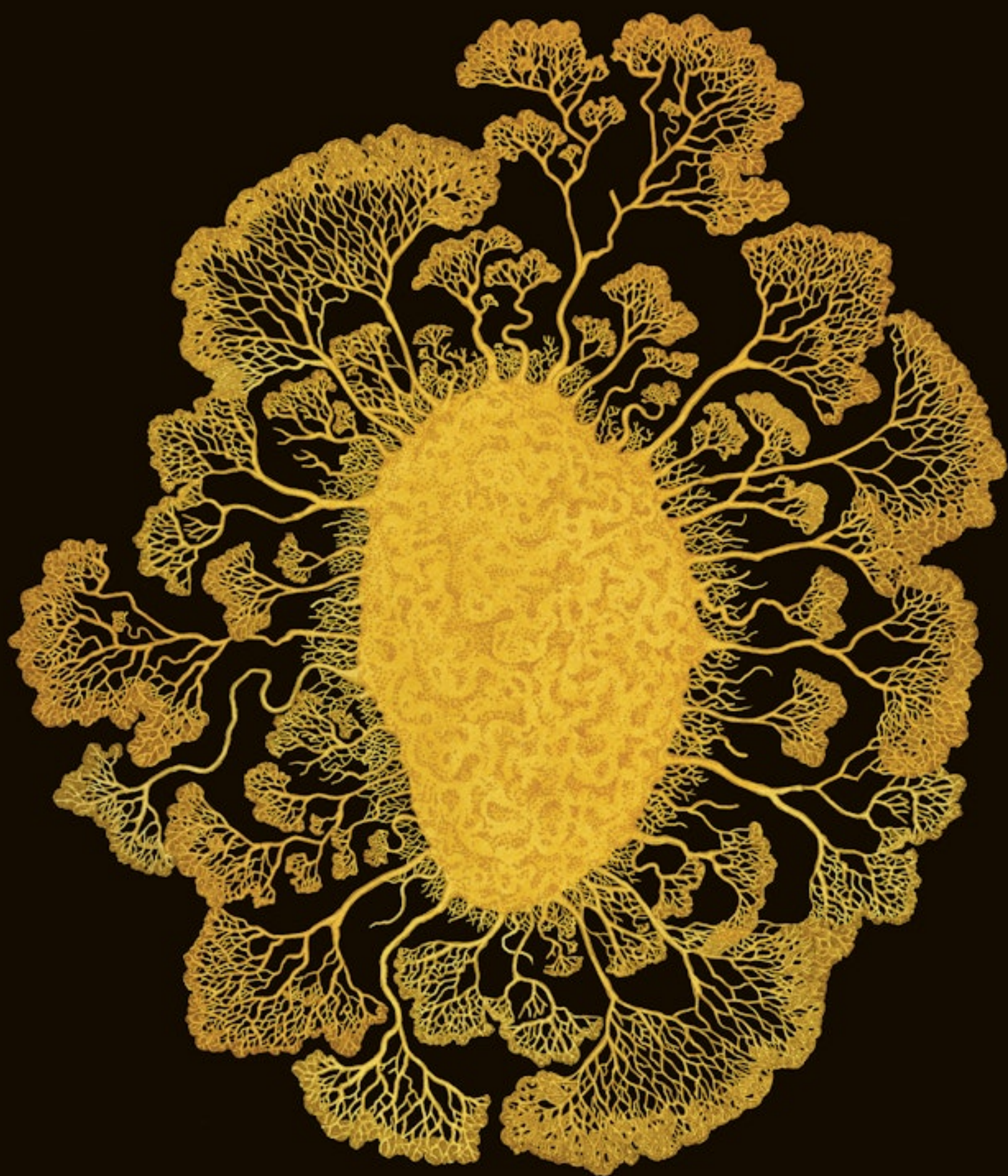






Destroying angel

Fungarium • © Big Picture Press, Katie Scott and the  
Board of Trustees of the Royal Botanic Gardens, Kew







*Physarum polycephalum*

Fungarium • © Big Picture Press, Katie Scott and the  
Board of Trustees of the Royal Botanic Gardens, Kew









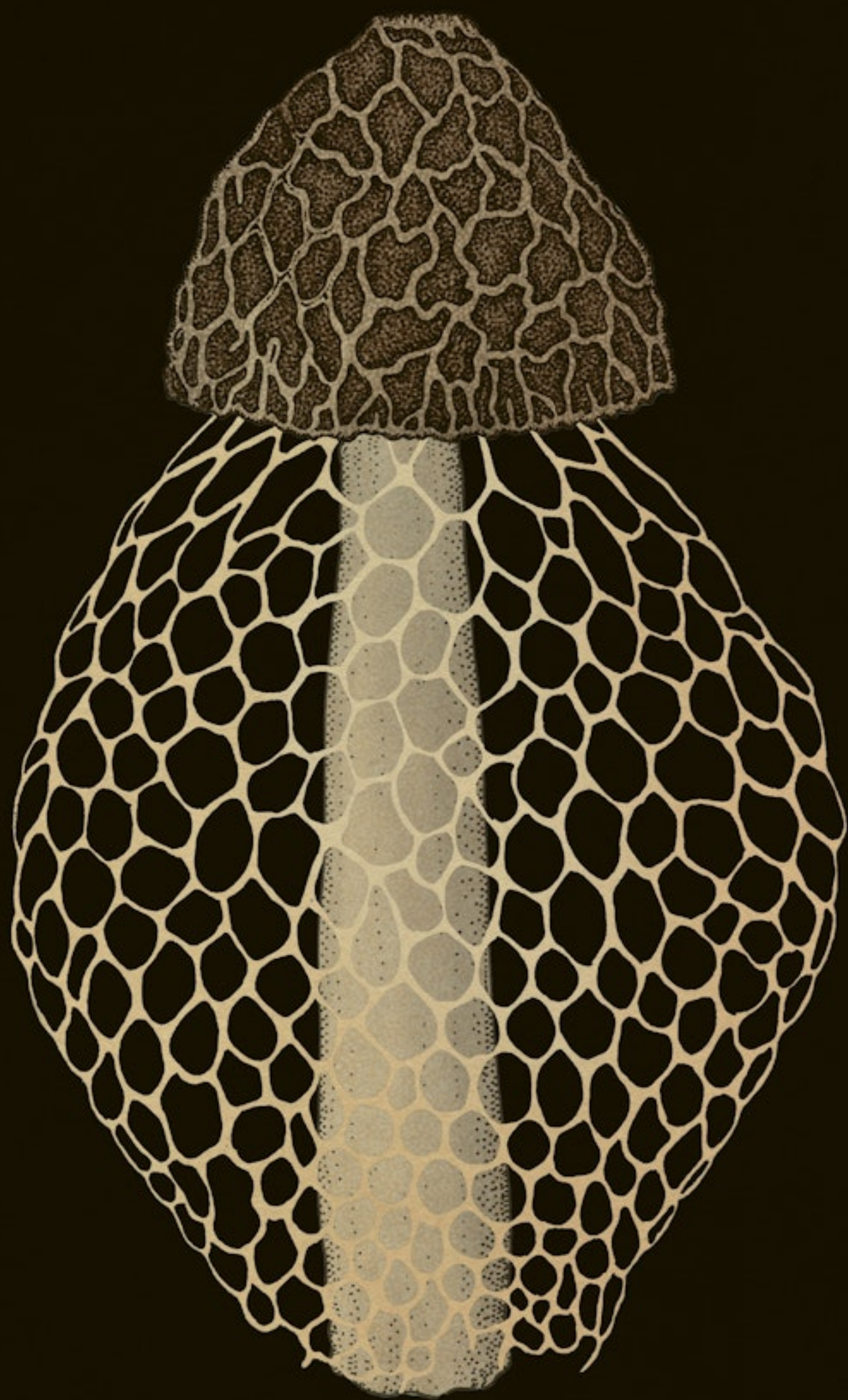








**Clockwise from top-left:** Leathery goblet, fly agaric, waxcap, orange peel fungus, *Cookeina speciosa*, Lane Cove waxcap





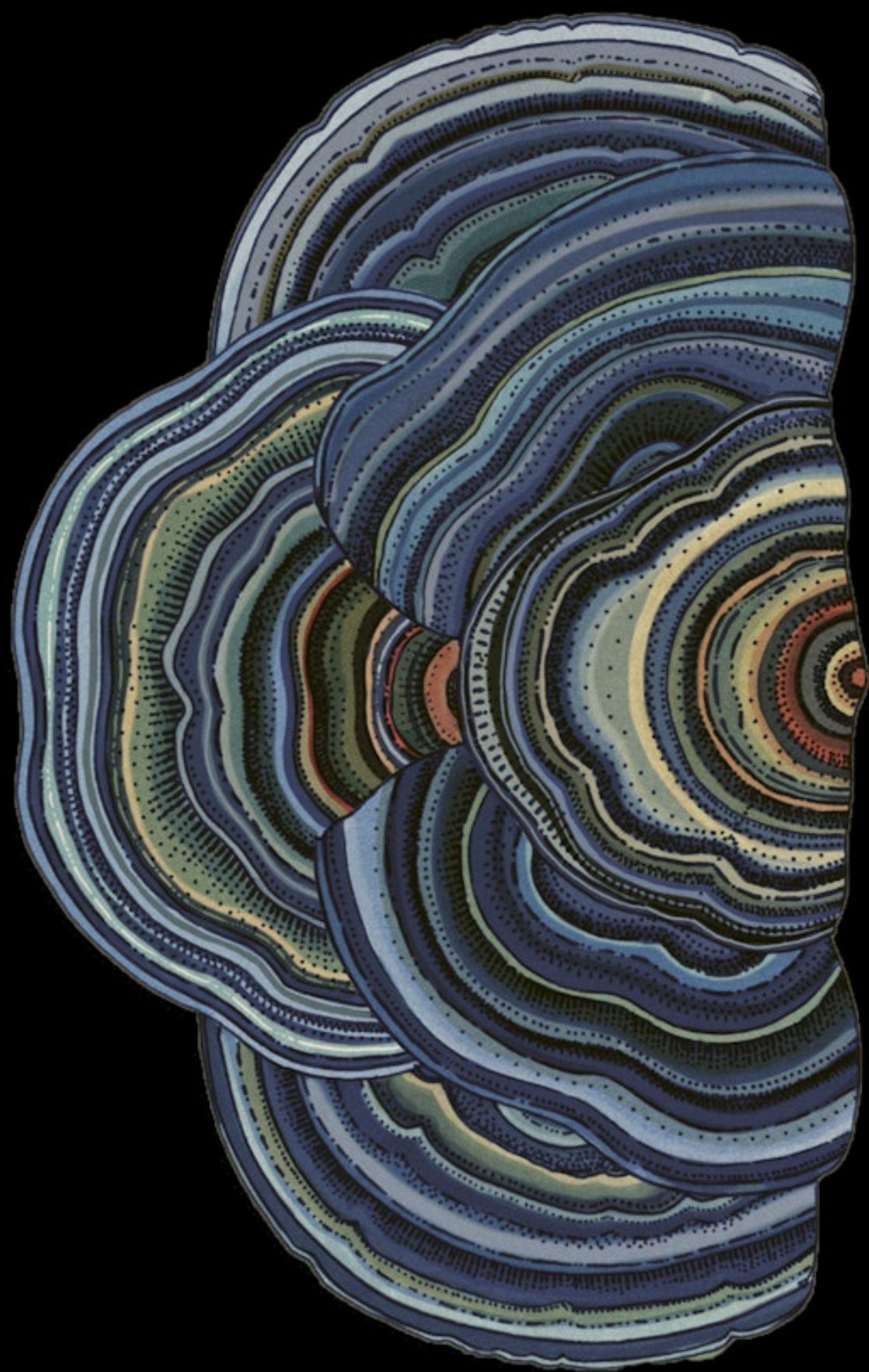








Termite mushroom







Turkeytail fungus







**Top to bottom, from left:** Sculpted puffball,  
common earthball, shaggy ink cap, common  
puffball, destroying angel, slime mould, Dutch elm  
disease, *Isaria sinclairii*





















Top to bottom: Ant fungus, zombie ant fungus

Fungarium • © Big Picture Press, Katie Scott and the  
Board of Trustees of the Royal Botanic Gardens, Kew