

An illustration of a penguin parent and its chick. The parent penguin is large, with a black head and back, a white belly, and a yellow beak. It is looking down at the chick. The chick is smaller, with a black head and back, a white belly, and a black beak. It is looking up at the parent. The background is blue with white snowflakes.

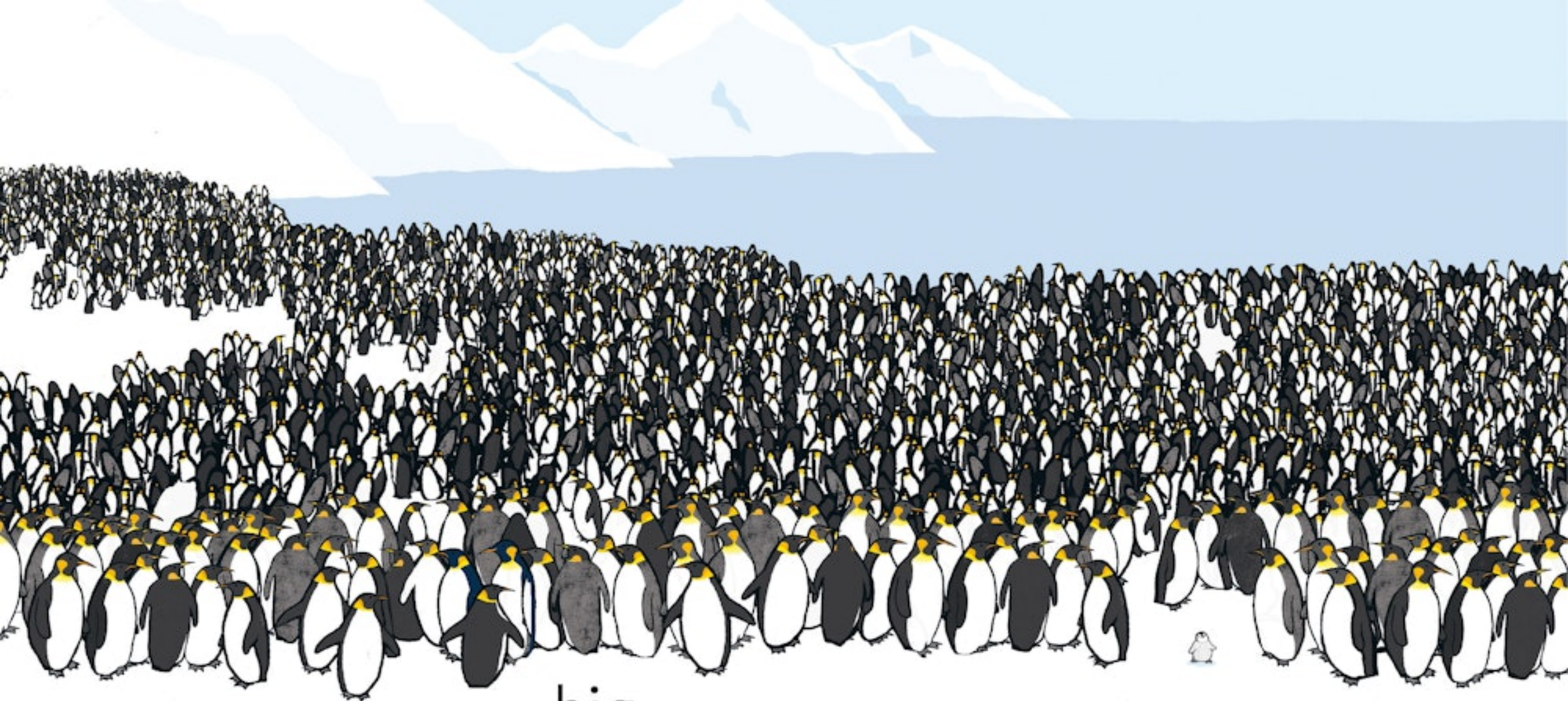
Me...

Emma Dodd

Me...

Emma Dodd





The world is **big**...

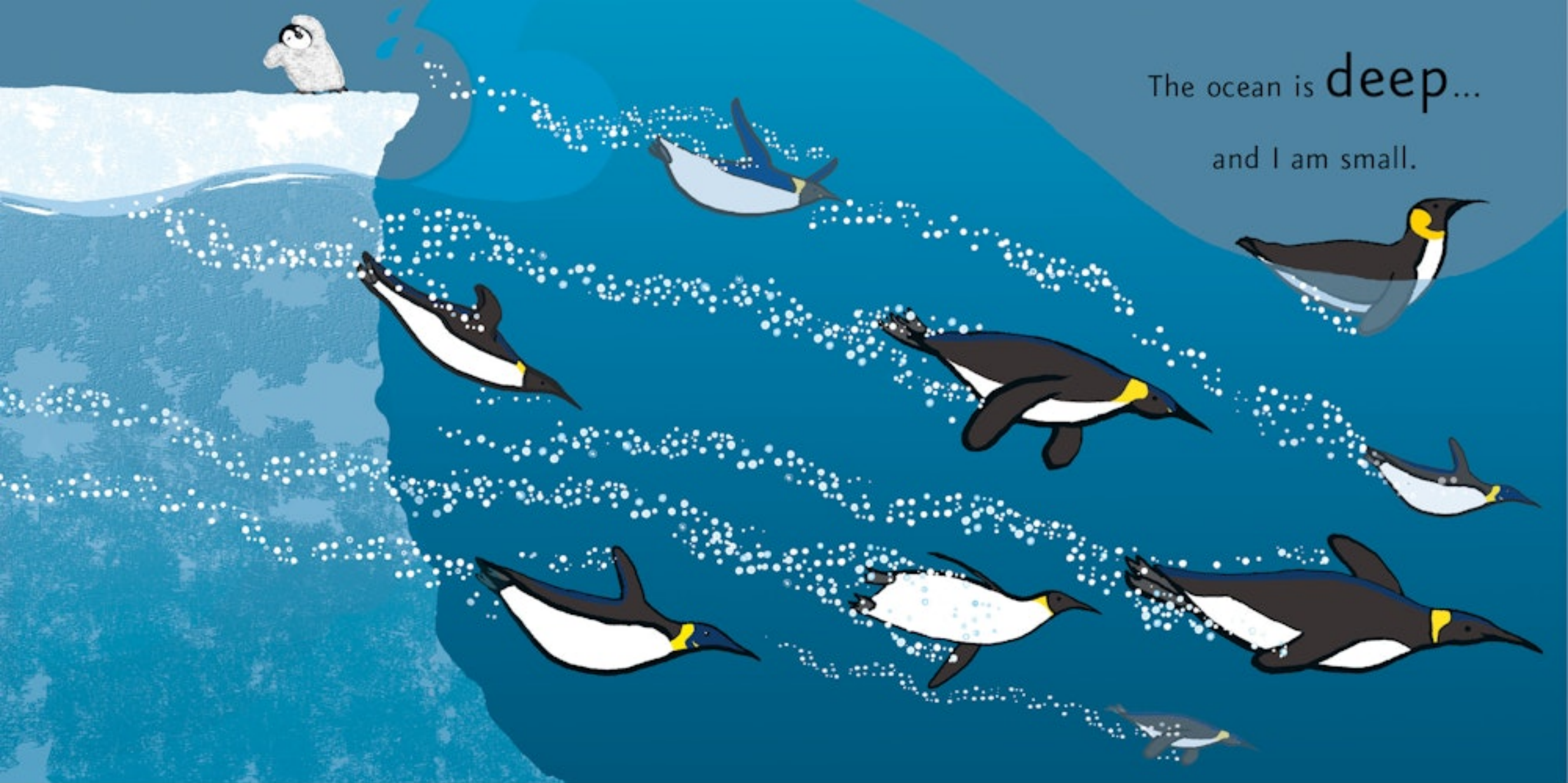
and I am small.



The world is **fast**...

and I am small.

The ocean is deep...
and I am small.

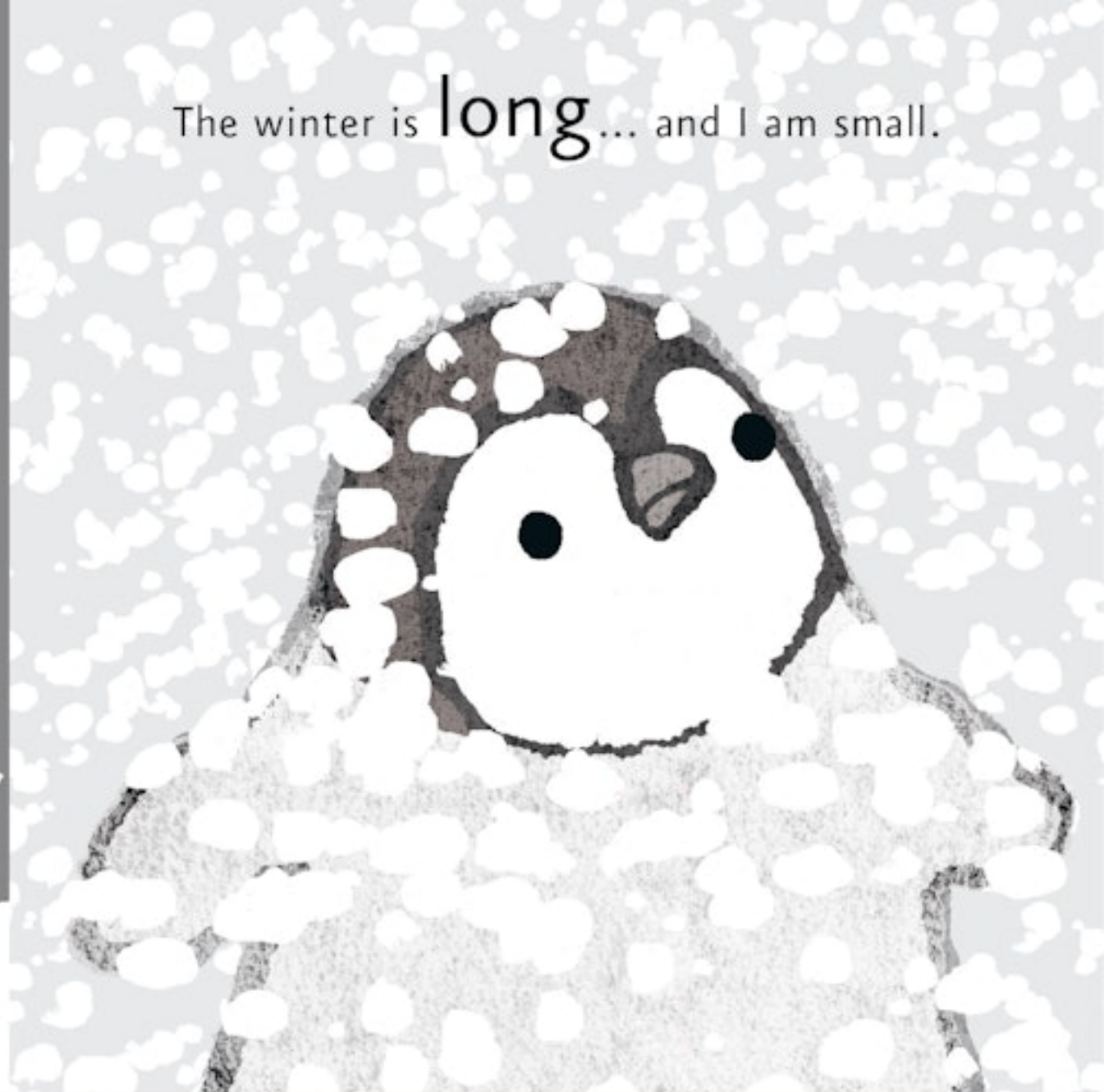




The mountains are **steep**...
and I am small.



The wind is **strong**... and I am small.



The winter is **long**... and I am small.

The sky is **high**...

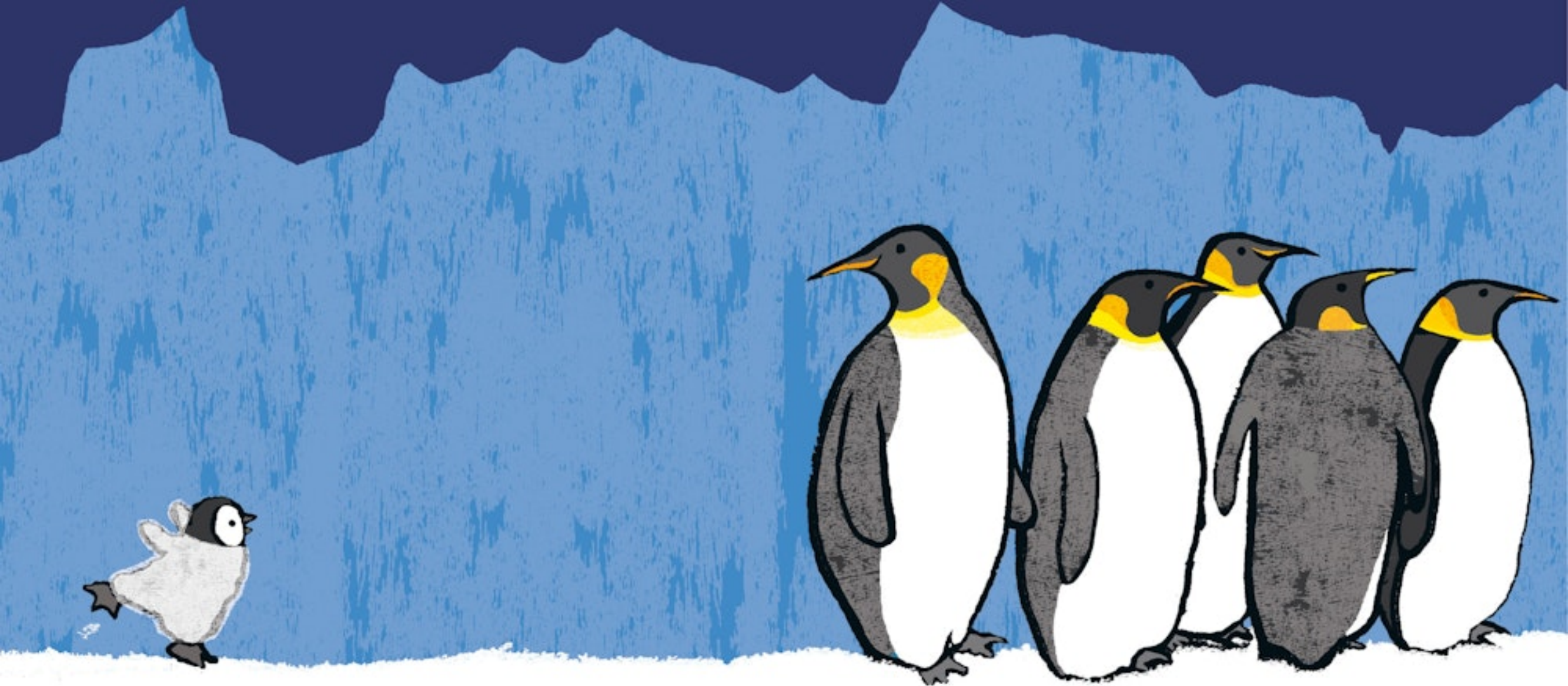
and I am small.






The stars stretch far...

and I am small.



These things are big and long and deep,

and strong and high and far and steep...

An illustration of an arctic scene. In the foreground, a large, fluffy white penguin stands on the left, its body filling the right half of the frame. A small, dark grey chick with a white face and black beak sits on the ice in front of the penguin's feet. The background features a dark blue sea with two white icebergs, and a dark blue sky with white stars and snow-capped mountains. The overall style is simple and illustrative.

and I am small.

But you are **big** and you are **kind**.
When I'm with you, I do not mind.



I may be **small**, but I can see
the biggest thing to you...

...is me!



A TEMPLAR BOOK

First published in the UK in 2010 by Templar Books,
an imprint of Bonnier Books UK,
The Plaza, 535 King's Road, London, SW10 0SZ
Owned by Bonnier Books
Sveavägen 56, Stockholm, Sweden
www.templarco.co.uk
www.bonnierbooks.co.uk

Copyright © 2010 by Emma Dodd

1 3 5 7 9 10 8 6 4 2

All rights reserved

ISBN 9781-84011-963-3

Printed in China